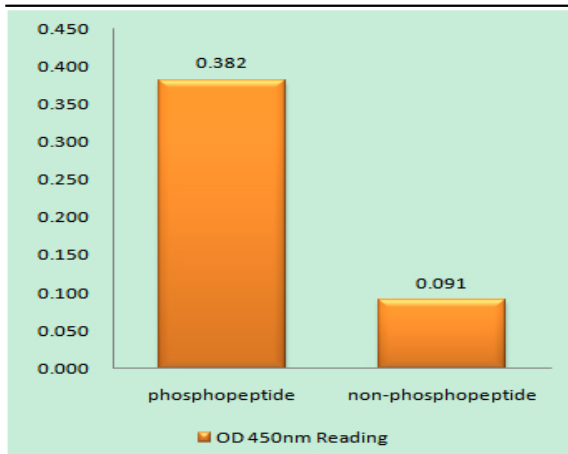


PRAS40 (phospho Thr246) Polyclonal Antibody

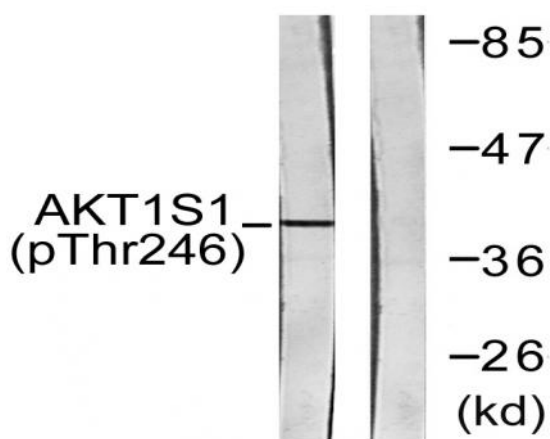
| | |
|------------------------------|---|
| Catalog No : | YP0302 |
| Reactivity : | Human;Mouse;Rat |
| Applications : | WB;IHC;IF;ELISA |
| Target : | PRAS40 |
| Fields : | >>Autophagy - animal;>>mTOR signaling pathway;>>AMPK signaling pathway;>>Longevity regulating pathway;>>Longevity regulating pathway - multiple species;>>Thermogenesis;>>Shigellosis |
| Gene Name : | AKT1S1 |
| Protein Name : | Proline-rich AKT1 substrate 1 |
| Human Gene Id : | 84335 |
| Human Swiss Prot No : | Q96B36 |
| Mouse Gene Id : | 67605 |
| Mouse Swiss Prot No : | Q9D1F4 |
| Immunogen : | The antiserum was produced against synthesized peptide derived from human Akt1 S1 around the phosphorylation site of Thr246. AA range:207-256 |
| Specificity : | Phospho-PRAS40 (T246) Polyclonal Antibody detects endogenous levels of PRAS40 protein only when phosphorylated at T246. |
| Formulation : | Liquid in PBS containing 50% glycerol, 0.5% BSA and 0.02% sodium azide. |
| Source : | Polyclonal, Rabbit,IgG |
| Dilution : | WB 1:500 - 1:2000. ELISA: 1:10000.. IF 1:50-200 |
| Purification : | The antibody was affinity-purified from rabbit antiserum by affinity-chromatography using epitope-specific immunogen. |

| | |
|-------------------------------|--|
| Concentration : | 1 mg/ml |
| Storage Stability : | -15°C to -25°C/1 year(Do not lower than -25°C) |
| Observed Band : | 40kD |
| Background : | AKT1S1 is a proline-rich substrate of AKT (MIM 164730) that binds 14-3-3 protein (see YWHAH, MIM 113508) when phosphorylated (Kovacina et al., 2003 [PubMed 12524439]).[supplied by OMIM, Mar 2008], |
| Function : | function:May play an important role in phosphatidylinositol 3-kinase (PI3K)-AKT1 survival signaling. Substrate for AKT1 phosphorylation, but can also be activated by AKT1-independent mechanisms. Its role in survival signaling pathways may be modulated by oxidative stress. May also play a role in nerve growth factor-mediated neuroprotection.,subcellular location:Found in the cytosolic fraction of the brain.,subunit:The phosphorylated form interacts with 14-3-3.,tissue specificity:Widely expressed with highest levels of expression in liver and heart. Expressed at higher levels in cancer cell lines (e.g. A549 and HeLa) than in normal cell lines (e.g. HEK293), |
| Subcellular Location : | Cytoplasm, cytosol . Found in the cytosolic fraction of the brain. . |
| Expression : | Widely expressed with highest levels of expression in liver and heart. Expressed at higher levels in cancer cell lines (e.g. A-549 and HeLa) than in normal cell lines (e.g. HEK293). |
| Tag : | orthogonal |
| Sort : | 12990 |
| No2 : | 2997T |
| No4 : | 1 |
| Host : | Rabbit |
| Modifications : | Phospho |

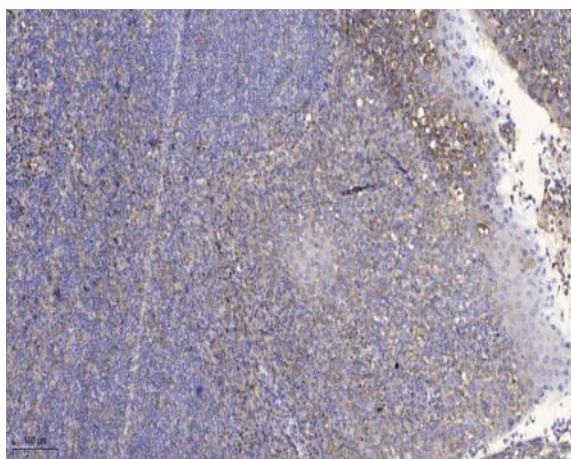
Products Images



Enzyme-Linked Immunosorbent Assay (Phospho-ELISA) for Immunogen Phosphopeptide (Phospho-left) and Non-Phosphopeptide (Phospho-right), using Akt1 S1 (Phospho-Thr246) Antibody



Western blot analysis of lysates from HepG2 cells treated with PDGF 50ng/ml 30', using Akt1 S1 (Phospho-Thr246) Antibody. The lane on the right is blocked with the phospho peptide.



Immunohistochemical analysis of paraffin-embedded human tonsil. 1, Antibody was diluted at 1:200(4° overnight). 2, Tris-EDTA,pH9.0 was used for antigen retrieval. 3,Secondary antibody was diluted at 1:200(room temperature, 30min).