

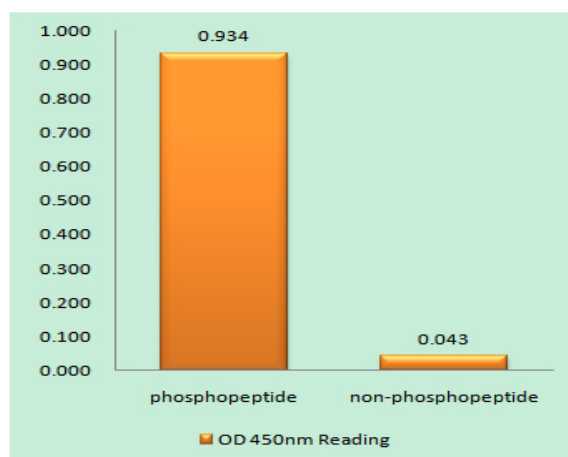
TACE (phospho Thr735) Polyclonal Antibody

Catalog No :	YP0335
Reactivity :	Human;Mouse;Rat
Applications :	WB;IHC;IF;ELISA
Target :	TACE
Fields :	>>Notch signaling pathway;>>Alzheimer disease;>>Epithelial cell signaling in Helicobacter pylori infection;>>Coronavirus disease - COVID-19
Gene Name :	ADAM17
Protein Name :	Disintegrin and metalloproteinase domain-containing protein 17
Human Gene Id :	6868
Human Swiss Prot No :	P78536
Mouse Gene Id :	11491
Mouse Swiss Prot No :	Q9Z0F8
Rat Gene Id :	57027
Rat Swiss Prot No :	Q9Z1K9
Immunogen :	The antiserum was produced against synthesized peptide derived from human ADAM 17 around the phosphorylation site of Thr735. AA range:701-750
Specificity :	Phospho-TACE (T735) Polyclonal Antibody detects endogenous levels of TACE protein only when phosphorylated at T735.
Formulation :	Liquid in PBS containing 50% glycerol, 0.5% BSA and 0.02% sodium azide.
Source :	Polyclonal, Rabbit,IgG
Dilution :	WB 1:500 - 1:2000. IHC 1:100 - 1:300. ELISA: 1:20000.. IF 1:50-200

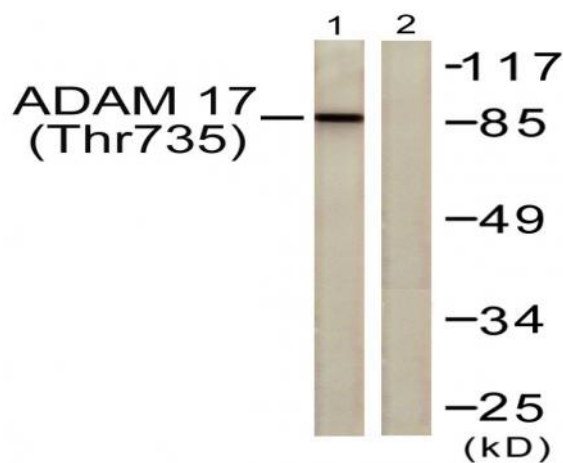
Purification :	The antibody was affinity-purified from rabbit antiserum by affinity-chromatography using epitope-specific immunogen.
Concentration :	1 mg/ml
Storage Stability :	-15°C to -25°C/1 year(Do not lower than -25°C)
Observed Band :	93kD
Cell Pathway :	Notch;Alzheimer's disease;Epithelial cell signaling in Helicobacter pylori infection;
Background :	ADAM metallopeptidase domain 17(ADAM17) Homo sapiens This gene encodes a member of the ADAM (a disintegrin and metalloprotease domain) family. Members of this family are membrane-anchored proteins structurally related to snake venom disintegrins, and have been implicated in a variety of biologic processes involving cell-cell and cell-matrix interactions, including fertilization, muscle development, and neurogenesis. The encoded preproprotein is proteolytically processed to generate the mature protease. The encoded protease functions in the ectodomain shedding of tumor necrosis factor-alpha, in which soluble tumor necrosis factor-alpha is released from the membrane-bound precursor. This protease also functions in the processing of numerous other substrates, including cell adhesion proteins, cytokine and growth factor receptors and epidermal growth factor (EGF) receptor ligands. The encoded protein also plays a prominent role in the activation o
Function :	catalytic activity:Narrow endopeptidase specificity. Cleaves Pro-Leu-Ala-Gln-Ala- -Val-Arg-Ser-Ser-Ser in the membrane-bound, 26-kDa form of tumor necrosis factor alpha (TNF-alpha). Similarly cleaves other membrane-anchored, cell-surface proteins to 'shed' the extracellular domains.,cofactor:Binds 1 zinc ion per subunit.,domain:Must be membrane anchored to cleave the different substrates. The cytoplasmic domain is not required for the this activity. Only the catalytic domain is essential to shed TNF and p75 TNFR.,domain:The conserved cysteine present in the cysteine-switch motif binds the catalytic zinc ion, thus inhibiting the enzyme. The dissociation of the cysteine from the zinc ion upon the activation-peptide release activates the enzyme.,function:Cleaves the membrane-bound precursor of TNF-alpha to its mature soluble form. Responsible for the proteolytic release of several other cel
Subcellular Location :	Membrane; Single-pass type I membrane protein.
Expression :	Ubiquitously expressed. Expressed at highest levels in adult heart, placenta, skeletal muscle, pancreas, spleen, thymus, prostate, testes, ovary and small intestine, and in fetal brain, lung, liver and kidney. Expressed in natural killer cells (at protein level) (PubMed:24337742).
Tag :	orthogonal

Sort :	16883
No4 :	1
Host :	Rabbit
Modifications :	Phospho

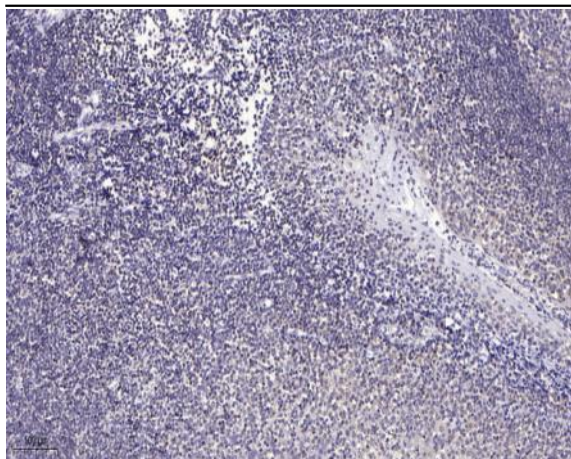
Products Images



Enzyme-Linked Immunosorbent Assay (Phospho-ELISA) for Immunogen Phosphopeptide (Phospho-left) and Non-Phosphopeptide (Phospho-right), using ADAM 17 (Phospho-Thr735) Antibody



Western blot analysis of lysates from K562 cells treated with UV 5', using ADAM 17 (Phospho-Thr735) Antibody. The lane on the right is blocked with the phospho peptide.



Immunohistochemical analysis of paraffin-embedded human tonsil. 1, Antibody was diluted at 1:200(4° overnight). 2, Tris-EDTA,pH9.0 was used for antigen retrieval. 3,Secondary antibody was diluted at 1:200(room temperature, 30min).