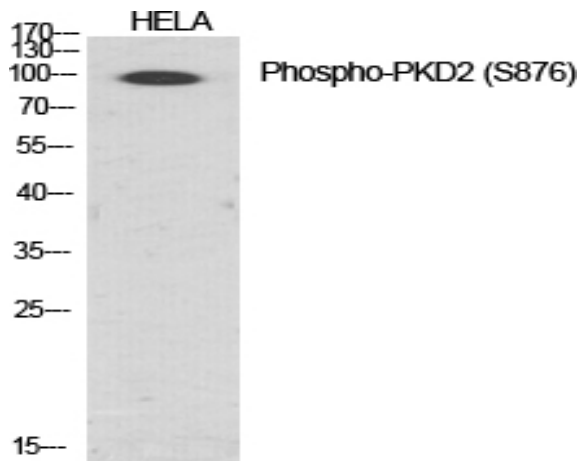


PKD2 (phospho Ser876) Polyclonal Antibody

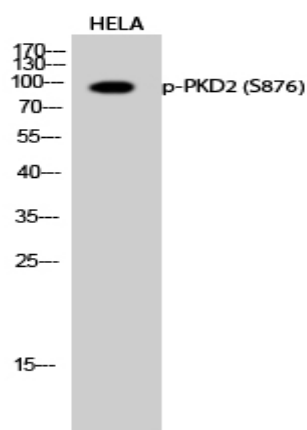
Catalog No :	YP0341
Reactivity :	Human;Mouse;Rat
Applications :	WB;IHC;IF;ELISA
Target :	PKD2
Fields :	>>Rap1 signaling pathway;>>Aldosterone synthesis and secretion;>>Chemical carcinogenesis - reactive oxygen species
Gene Name :	PRKD2
Protein Name :	Serine/threonine-protein kinase D2
Human Gene Id :	25865
Human Swiss Prot No :	Q9BZL6
Mouse Gene Id :	101540
Mouse Swiss Prot No :	Q8BZ03
Rat Gene Id :	292658
Rat Swiss Prot No :	Q5XIS9
Immunogen :	The antiserum was produced against synthesized peptide derived from human PKD2 around the phosphorylation site of Ser876. AA range:829-878
Specificity :	Phospho-PKD2 (S876) Polyclonal Antibody detects endogenous levels of PKD2 protein only when phosphorylated at S876.
Formulation :	Liquid in PBS containing 50% glycerol, 0.5% BSA and 0.02% sodium azide.
Source :	Polyclonal, Rabbit,IgG
Dilution :	WB 1:500 - 1:2000. IHC 1:100 - 1:300. ELISA: 1:40000.. IF 1:50-200

Purification :	The antibody was affinity-purified from rabbit antiserum by affinity-chromatography using epitope-specific immunogen.
Concentration :	1 mg/ml
Storage Stability :	-15°C to -25°C/1 year(Do not lower than -25°C)
Observed Band :	96kD
Cell Pathway :	Regulation_Microtubule; Regulation of Actin Dynamics; Stem cell pathway; Insulin Receptor; B Cell Receptor; AMPK
Background :	The protein encoded by this gene belongs to the protein kinase D (PKD) family of serine/threonine protein kinases. This kinase can be activated by phorbol esters as well as by gastrin via the cholecystokinin B receptor (CCKBR) in gastric cancer cells. It can bind to diacylglycerol (DAG) in the trans-Golgi network (TGN) and may regulate basolateral membrane protein exit from TGN. Alternative splicing results in multiple transcript variants encoding different isoforms. [provided by RefSeq, Jul 2008],
Function :	catalytic activity:ATP + a protein = ADP + a phosphoprotein.,enzyme regulation:Activated by diacylglycerol and phorbol esters.,function:Calcium-independent, phospholipid-dependent, serine- and threonine-specific protein kinase.,PTM:Autophosphorylated. Phorbol esters stimulates autophosphorylation. Phosphorylation of Ser-876 correlates with the activation status of the kinase.,similarity:Belongs to the protein kinase superfamily.,similarity:Belongs to the protein kinase superfamily. CAMK Ser/Thr protein kinase family. PKD subfamily.,similarity:Contains 1 PH domain.,similarity:Contains 1 protein kinase domain.,similarity:Contains 2 phorbol-ester/DAG-type zinc fingers.,tissue specificity:Widely expressed.,
Subcellular Location :	Cytoplasm . Cell membrane . Nucleus . Golgi apparatus, trans-Golgi network . Translocation to the cell membrane is required for kinase activation. Accumulates in the nucleus upon CK1-mediated phosphorylation after activation of G-protein-coupled receptors. Nuclear accumulation is regulated by blocking nuclear export of active PRKD2 rather than by increasing import. .
Expression :	Widely expressed.
Tag :	orthogonal,hot
Sort :	12782
No4 :	1
Host :	Rabbit

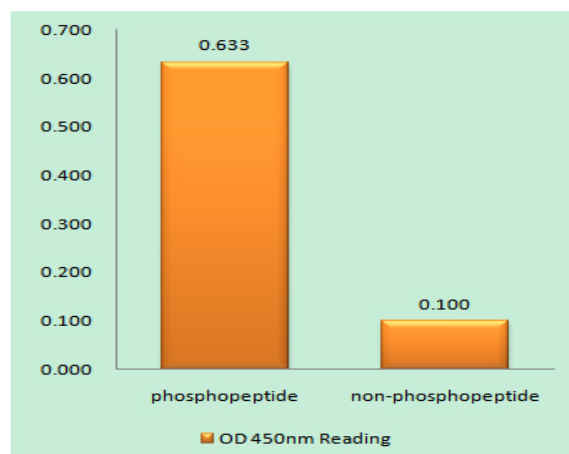
Products Images



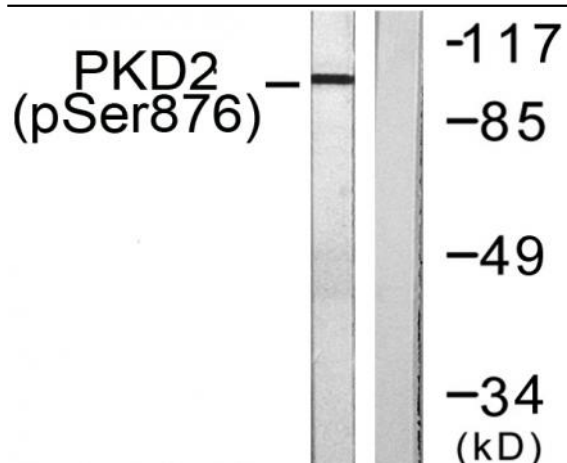
Western Blot analysis of various cells using Phospho-PKD2 (S876) Polyclonal Antibody diluted at 1:1000



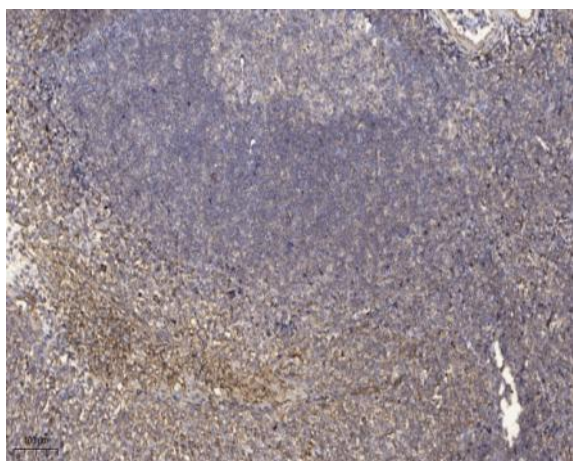
Western Blot analysis of HELA cells using Phospho-PKD2 (S876) Polyclonal Antibody diluted at 1:1000



Enzyme-Linked Immunosorbent Assay (Phospho-ELISA) for Immunogen Phosphopeptide (Phospho-left) and Non-Phosphopeptide (Phospho-right), using PKD2 (Phospho-Ser876) Antibody



Western blot analysis of lysates from NIH/3T3 cells treated with PMA 250ng/ml 15', using PKD2 (Phospho-Ser876) Antibody. The lane on the right is blocked with the phospho peptide.



Immunohistochemical analysis of paraffin-embedded human tonsil. 1, Antibody was diluted at 1:200(4° overnight). 2, Tris-EDTA,pH9.0 was used for antigen retrieval. 3,Secondary antibody was diluted at 1:200(room temperature, 30min).