

**CD28 (phospho Tyr218) Polyclonal Antibody**

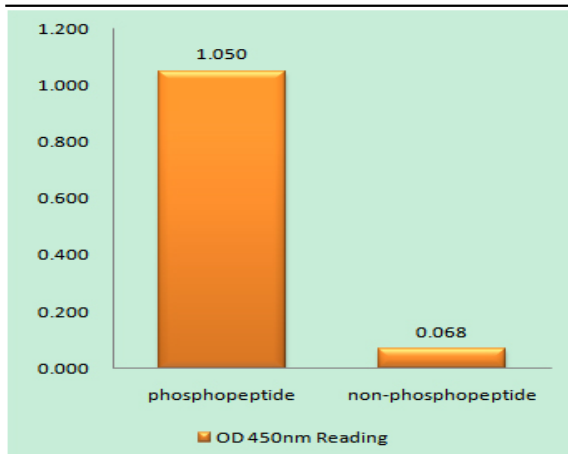
<b>Catalog No :</b>	YP0348
<b>Reactivity :</b>	Human
<b>Applications :</b>	WB;ELISA
<b>Target :</b>	CD28
<b>Fields :</b>	>>Cell adhesion molecules;>>T cell receptor signaling pathway;>>Intestinal immune network for IgA production;>>Type I diabetes mellitus;>>Measles;>>PD-L1 expression and PD-1 checkpoint pathway in cancer;>>Autoimmune thyroid disease;>>Systemic lupus erythematosus;>>Rheumatoid arthritis;>>Allograft rejection;>>Graft-versus-host disease;>>Viral myocarditis
<b>Gene Name :</b>	CD28
<b>Protein Name :</b>	T-cell-specific surface glycoprotein CD28
<b>Human Gene Id :</b>	940
<b>Human Swiss Prot No :</b>	P10747
<b>Mouse Gene Id :</b>	12487
<b>Mouse Swiss Prot No :</b>	P31041
<b>Immunogen :</b>	The antiserum was produced against synthesized peptide derived from human CD28 around the phosphorylation site of Tyr218. AA range:171-220
<b>Specificity :</b>	Phospho-CD28 (Y218) Polyclonal Antibody detects endogenous levels of CD28 protein only when phosphorylated at Y218.
<b>Formulation :</b>	Liquid in PBS containing 50% glycerol, 0.5% BSA and 0.02% sodium azide.
<b>Source :</b>	Polyclonal, Rabbit,IgG
<b>Dilution :</b>	WB 1:500 - 1:2000. ELISA: 1:40000. Not yet tested in other applications.

---

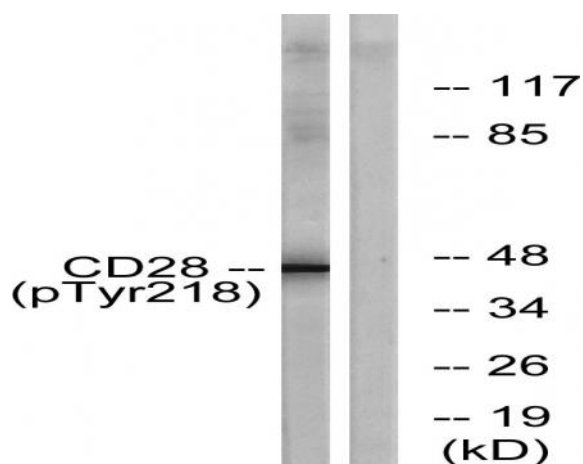
<b>Purification :</b>	The antibody was affinity-purified from rabbit antiserum by affinity-chromatography using epitope-specific immunogen.
<b>Concentration :</b>	1 mg/ml
<b>Storage Stability :</b>	-15°C to -25°C/1 year(Do not lower than -25°C)
<b>Observed Band :</b>	45kD
<b>Cell Pathway :</b>	Cell adhesion molecules (CAMs);T_Cell_Receptor;Intestinal immune network for IgA production;Type I diabetes mellitus;Autoimmune thyroid disease;Systemic lupus erythematosus;Allograft rejection;Graft-v
<b>Background :</b>	The protein encoded by this gene is essential for T-cell proliferation and survival, cytokine production, and T-helper type-2 development. Several alternatively spliced transcript variants encoding different isoforms have been found for this gene.[provided by RefSeq, Jul 2011],
<b>Function :</b>	function:Involved in T-cell activation, the induction of cell proliferation and cytokine production and promotion of T-cell survival.,online information:CD28 entry,similarity:Contains 1 Ig-like V-type (immunoglobulin-like) domain.,subunit:Homodimer; disulfide-linked. Interacts with DUSP14. Binds to CD80/B7-1 and CD86/B7-2/B70.,tissue specificity:Expressed in T-cells and plasma cells, but not in less mature B-cells.,
<b>Subcellular Location :</b>	Membrane; Single-pass type I membrane protein.; [Isoform 3]: Cell surface .
<b>Expression :</b>	Expressed in T-cells and plasma cells, but not in less mature B-cells.
<b>Tag :</b>	orthogonal
<b>Sort :</b>	3506
<b>No4 :</b>	1
<b>Host :</b>	Rabbit
<b>Modifications :</b>	Phospho

---

## Products Images



Enzyme-Linked Immunosorbent Assay (Phospho-ELISA) for Immunogen Phosphopeptide (Phospho-left) and Non-Phosphopeptide (Phospho-right), using CD28 (Phospho-Tyr218) Antibody



Western blot analysis of lysates from HepG2 cells treated with nocodazole 1ug/ml 16h, using CD28 (Phospho-Tyr218) Antibody. The lane on the right is blocked with the phospho peptide.