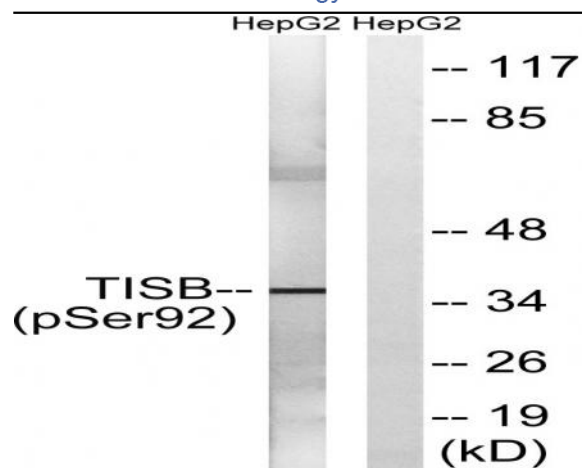


TIS11B (phospho Ser92) Polyclonal Antibody

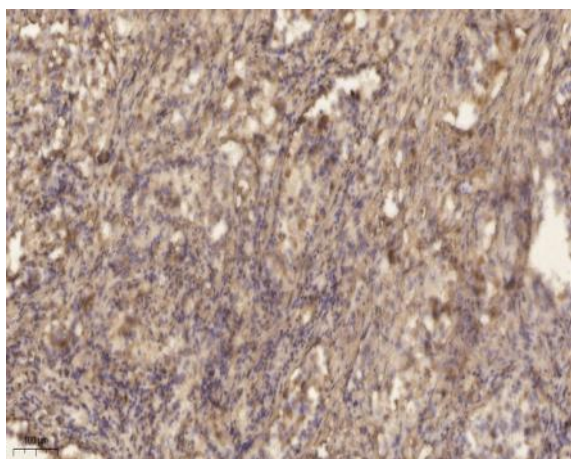
| | |
|------------------------------|--|
| Catalog No : | YP0389 |
| Reactivity : | Human;Mouse;Rat |
| Applications : | WB;ELISA;IHC |
| Target : | TIS11B |
| Fields : | >>Cellular senescence |
| Gene Name : | ZFP36L1 |
| Protein Name : | Zinc finger protein 36 C3H1 type-like 1 |
| Human Gene Id : | 677 |
| Human Swiss Prot No : | Q07352 |
| Mouse Gene Id : | 12192 |
| Mouse Swiss Prot No : | P23950 |
| Rat Gene Id : | 29344 |
| Rat Swiss Prot No : | P17431 |
| Immunogen : | The antiserum was produced against synthesized peptide derived from human TISB around the phosphorylation site of Ser92. AA range:58-107 |
| Specificity : | Phospho-TIS11B (S92) Polyclonal Antibody detects endogenous levels of TIS11B protein only when phosphorylated at S92. |
| Formulation : | Liquid in PBS containing 50% glycerol, 0.5% BSA and 0.02% sodium azide. |
| Source : | Polyclonal, Rabbit,IgG |
| Dilution : | WB 1:500-2000;IHC 1:50-300; ELISA 2000-20000 |

| | |
|-------------------------------|--|
| Purification : | The antibody was affinity-purified from rabbit antiserum by affinity-chromatography using epitope-specific immunogen. |
| Concentration : | 1 mg/ml |
| Storage Stability : | -15°C to -25°C/1 year(Do not lower than -25°C) |
| Observed Band : | 36kD |
| Background : | This gene is a member of the TIS11 family of early response genes, which are induced by various agonists such as the phorbol ester TPA and the polypeptide mitogen EGF. This gene is well conserved across species and has a promoter that contains motifs seen in other early-response genes. The encoded protein contains a distinguishing putative zinc finger domain with a repeating cys-his motif. This putative nuclear transcription factor most likely functions in regulating the response to growth factors. Alternatively spliced transcript variants encoding different isoforms have been found for this gene. [provided by RefSeq, Sep 2011], |
| Function : | function:Probable regulatory protein involved in regulating the response to growth factors.,similarity:Contains 2 C3H1-type zinc fingers., |
| Subcellular Location : | Nucleus . Cytoplasm . Cytoplasmic granule . Cytoplasm, P-body . Shuttles between the nucleus and the cytoplasm in a XPO1/CRM1-dependent manner (By similarity). Component of cytoplasmic stress granules (PubMed:15967811). Localizes in processing bodies (PBs) (PubMed:17369404). . |
| Expression : | Expressed mainly in the basal epidermal layer, weakly in the suprabasal epidermal layers (PubMed:27182009). Expressed in epidermal keratinocytes (at protein level) (PubMed:27182009). Expressed in osteoblasts (PubMed:15465005). |
| Sort : | 17181 |
| No4 : | 1 |
| Host : | Rabbit |
| Modifications : | Phospho |

Products Images



Western blot analysis of lysates from HepG2 cells, using TISB (Phospho-Ser92) Antibody. The lane on the right is blocked with the phospho peptide.



Immunohistochemical analysis of paraffin-embedded human lung cancer. 1, Antibody was diluted at 1:200(4° overnight). 2, Tris-EDTA,pH9.0 was used for antigen retrieval. 3,Secondary antibody was diluted at 1:200(room temperature, 45min).