

PKC β (phospho Ser661) Polyclonal Antibody

Catalog No :	YP0432
Reactivity :	Human;Mouse;Rat
Applications :	WB;IHC;IF;ELISA
Target :	PKC β
Fields :	>>EGFR tyrosine kinase inhibitor resistance;>>MAPK signaling pathway;>>ErbB signaling pathway;>>Ras signaling pathway;>>Rap1 signaling pathway;>>Calcium signaling pathway;>>Chemokine signaling pathway;>>NF-kappa B signaling pathway;>>HIF-1 signaling pathway;>>Phosphatidylinositol signaling system;>>Sphingolipid signaling pathway;>>mTOR signaling pathway;>>Vascular smooth muscle contraction;>>Wnt signaling pathway;>>VEGF signaling pathway;>>Focal adhesion;>>Gap junction;>>Neutrophil extracellular trap formation;>>Natural killer cell mediated cytotoxicity;>>B cell receptor signaling pathway;>>Fc gamma R-mediated phagocytosis;>>Leukocyte transendothelial migration;>>Circadian entrainment;>>Long-term potentiation;>>Retrograde endocannabinoid signaling;>>Glutamatergic synapse;>>Cholinergic synapse;>>Serotonergic synapse;>>GABAergic synapse;>>Dopaminergic synapse;>>Long-term depression;>>Inflammatory mediator regulation of TRP channels;>>Insulin secretion;>>GnRH signaling pathway;>>Melanogen
Gene Name :	PRKCB
Protein Name :	Protein kinase C beta type
Human Gene Id :	5579
Human Swiss Prot No :	P05771
Mouse Gene Id :	18751
Mouse Swiss Prot No :	P68404
Rat Gene Id :	25023
Rat Swiss Prot No :	P68403

Immunogen :	The antiserum was produced against synthesized peptide derived from human PKCB around the phosphorylation site of Ser661. AA range:622-671
Specificity :	Phospho-PKC β (S661) Polyclonal Antibody detects endogenous levels of PKC β protein only when phosphorylated at S661.
Formulation :	Liquid in PBS containing 50% glycerol, 0.5% BSA and 0.02% sodium azide.
Source :	Polyclonal, Rabbit,IgG
Dilution :	WB 1:500 - 1:2000. IHC 1:100 - 1:300. ELISA: 1:20000.. IF 1:50-200
Purification :	The antibody was affinity-purified from rabbit antiserum by affinity-chromatography using epitope-specific immunogen.
Concentration :	1 mg/ml
Storage Stability :	-15°C to -25°C/1 year(Do not lower than -25°C)
Observed Band :	77kD
Cell Pathway :	Regulation_Microtubule; Regulation of Actin Dynamics; Stem cell pathway; Insulin Receptor; ErbB/HER; MAPK_ERK_Growth;MAPK_G_Protein; WNT;WNT-T CELL; β -Catenin; B Cell Receptor; NF_ κ B; mTOR; AMPK
Background :	Protein kinase C (PKC) is a family of serine- and threonine-specific protein kinases that can be activated by calcium and second messenger diacylglycerol. PKC family members phosphorylate a wide variety of protein targets and are known to be involved in diverse cellular signaling pathways. PKC family members also serve as major receptors for phorbol esters, a class of tumor promoters. Each member of the PKC family has a specific expression profile and is believed to play a distinct role in cells. The protein encoded by this gene is one of the PKC family members. This protein kinase has been reported to be involved in many different cellular functions, such as B cell activation, apoptosis induction, endothelial cell proliferation, and intestinal sugar absorption. Studies in mice also suggest that this kinase may also regulate neuronal functions and correlate fear-induced conflict behavior after stress
Function :	catalytic activity:ATP + a protein = ADP + a phosphoprotein.,cofactor: Binds 3 calcium ions per subunit. The ions are bound to the C2 domain.,function:This is a calcium-activated, phospholipid-dependent, serine- and threonine-specific enzyme. PKC is activated by diacylglycerol which in turn phosphorylates a range of cellular proteins. PKC also serves as the receptor for phorbol esters, a class of tumor promoters. May be considered as a novel component of the NF- κ -B signaling axis responsible for the survival and activation of B-cells after BCR cross-linking.,PTM:Phosphorylation on Thr-500 of isoform beta-I, within the

activation loop, renders it competent to autophosphorylate. Subsequent autophosphorylation of Thr-642 maintains catalytic competence, and autophosphorylation on Ser-661 appears to release the kinase into the cytosol. Similarly, isoform beta-II is autophosphorylated on 'T'

Subcellular Location :

Cytoplasm . Nucleus . Membrane ; Peripheral membrane protein .

Expression :

Fetal brain,Hippocampus,Platelet,

Tag :

orthogonal

Sort :

12743

No4 :

1

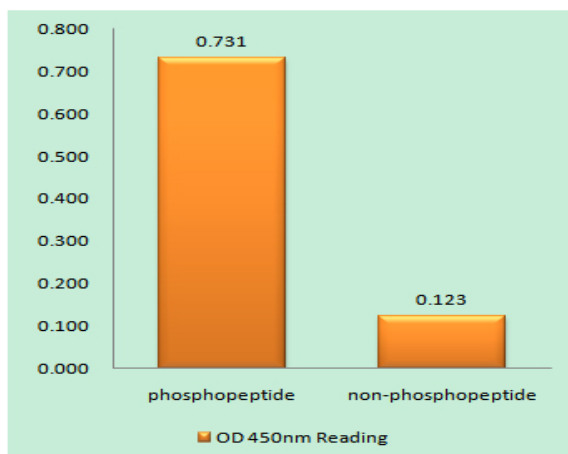
Host :

Rabbit

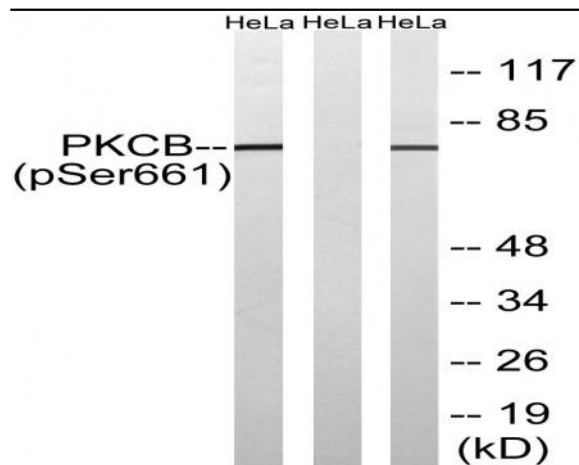
Modifications :

Phospho

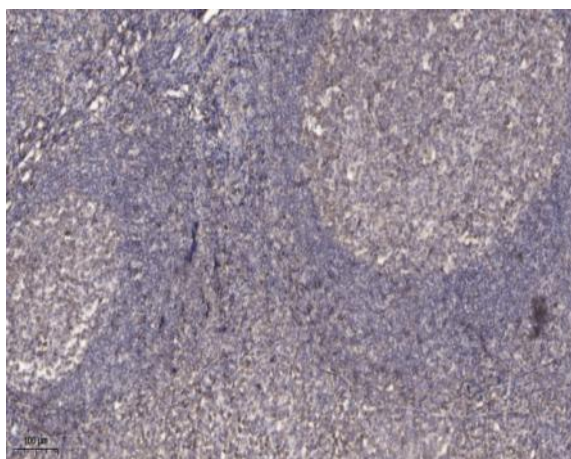
Products Images



Enzyme-Linked Immunosorbent Assay (Phospho-ELISA) for Immunogen Phosphopeptide (Phospho-left) and Non-Phosphopeptide (Phospho-right), using PKCB (Phospho-Ser661) Antibody



Western blot analysis of lysates from HeLa cells treated with heat shock, using PKCB (Phospho-Ser661) Antibody. The lane on the right is blocked with the phospho peptide.



Immunohistochemical analysis of paraffin-embedded human tonsil. 1, Antibody was diluted at 1:200(4° overnight). 2, Tris-EDTA,pH9.0 was used for antigen retrieval. 3,Secondary antibody was diluted at 1:200(room temperature, 45min).