

RPA p32 (phospho Ser33) Polyclonal Antibody

| | |
|------------------------------|----------------------------------------------------------------------------------------------------------------------------------------|
| Catalog No : | YP0476 |
| Reactivity : | Human;Mouse;Rat |
| Applications : | WB;IHC |
| Target : | RFA2 |
| Fields : | >>DNA replication;>>Nucleotide excision repair;>>Mismatch repair;>>Homologous recombination;>>Fanconi anemia pathway |
| Gene Name : | RPA2 |
| Protein Name : | Replication protein A 32 kDa subunit |
| Human Gene Id : | 6118 |
| Human Swiss Prot No : | P15927 |
| Mouse Swiss Prot No : | Q62193 |
| Rat Gene Id : | 59102 |
| Rat Swiss Prot No : | Q63528 |
| Immunogen : | The antiserum was produced against synthesized peptide derived from human RFA2 around the phosphorylation site of Ser33. AA range:1-50 |
| Specificity : | Phospho-RPA p32 (S33) Polyclonal Antibody detects endogenous levels of RPA p32 protein only when phosphorylated at S33. |
| Formulation : | Liquid in PBS containing 50% glycerol, 0.5% BSA and 0.02% sodium azide. |
| Source : | Polyclonal, Rabbit,IgG |
| Dilution : | WB 1:500-2000;IHC 1:50-300 |
| Purification : | The antibody was affinity-purified from rabbit antiserum by affinity- |

chromatography using epitope-specific immunogen.

Concentration : 1 mg/ml

Storage Stability : -15°C to -25°C/1 year(Do not lower than -25°C)

Observed Band : 32kD

Cell Pathway : DNA replication;Nucleotide excision repair;Mismatch repair;Homologous recombination;

Background : function:Required for DNA recombination, repair and replication. The activity of RP-A is mediated by single-stranded DNA binding and protein interactions.,PTM:Phosphorylated in a cell-cycle-dependent manner (from the S phase until mitosis). Phosphorylated by ATR upon DNA damage, which promotes its translocation to nuclear foci. Can be phosphorylated in vitro by PRKDC/DNA-PK in the presence of Ku and DNA, and by CDC2.,subcellular location:Also present in PML nuclear bodies. Redistributes to discrete nuclear foci upon DNA damage.,subunit:Heterotrimer of 70, 32 and 14 kDa chains. The DNA-binding activity may reside exclusively on the 70 kDa subunit. Binds to SERTAD3/RBT1. Interacts with TIPIN.,

Function : function:Required for DNA recombination, repair and replication. The activity of RP-A is mediated by single-stranded DNA binding and protein interactions.,PTM:Phosphorylated in a cell-cycle-dependent manner (from the S phase until mitosis). Phosphorylated by ATR upon DNA damage, which promotes its translocation to nuclear foci. Can be phosphorylated in vitro by PRKDC/DNA-PK in the presence of Ku and DNA, and by CDC2.,subcellular location:Also present in PML nuclear bodies. Redistributes to discrete nuclear foci upon DNA damage.,subunit:Heterotrimer of 70, 32 and 14 kDa chains. The DNA-binding activity may reside exclusively on the 70 kDa subunit. Binds to SERTAD3/RBT1. Interacts with TIPIN.,

Subcellular Location : Nucleus . Nucleus, PML body . Redistributes to discrete nuclear foci upon DNA damage in an ATR-dependent manner. .

Expression : Kidney,Lung,Muscle,

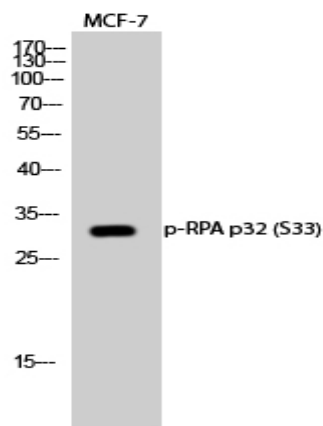
Tag : orthogonal

Sort : 14585

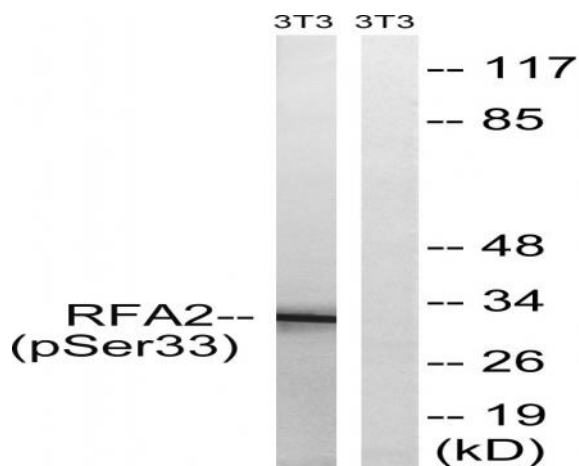
No4 : 1

Host : Rabbit

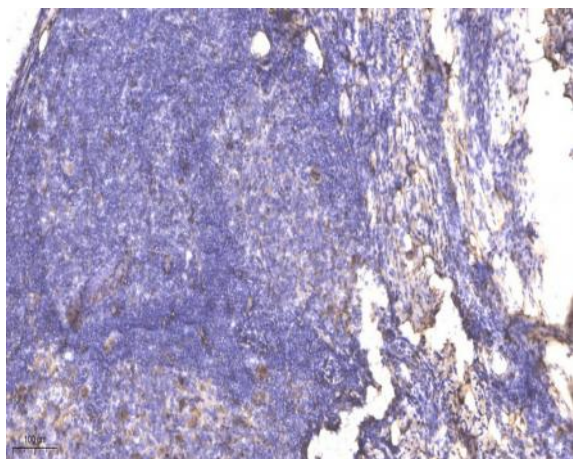
Products Images



Western Blot analysis of MCF-7 cells using Phospho-RPA p32 (S33) Polyclonal Antibody diluted at 1:500 cells nucleus extracted by Minute TM Cytoplasmic and Nuclear Fractionation kit (SC-003, Inventibiotech, MN, USA).



Western blot analysis of lysates from NIH/3T3 cells treated with Adriamycin 0.5ug/ml 24h, using RFA2 (Phospho-Ser33) Antibody. The lane on the right is blocked with the phospho peptide.



Immunohistochemical analysis of paraffin-embedded human cervical carcinoma. 1, Antibody was diluted at 1:200(4° overnight). 2, Tris-EDTA, pH9.0 was used for antigen retrieval. 3, Secondary antibody was diluted at 1:200(room temperature, 45min).