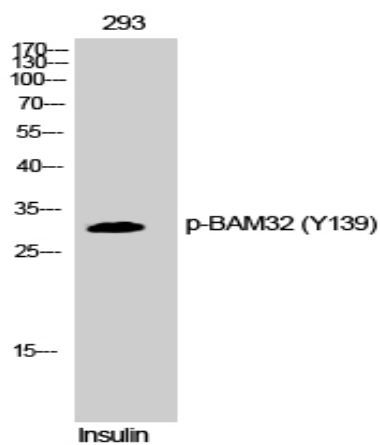


**BAM32 (phospho Tyr139) Polyclonal Antibody**

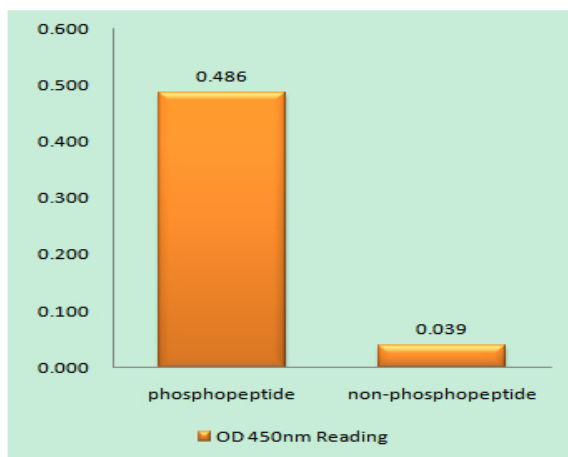
<b>Catalog No :</b>	YP0549
<b>Reactivity :</b>	Human;Mouse
<b>Applications :</b>	WB;IHC;IF;ELISA
<b>Target :</b>	DAPP1
<b>Fields :</b>	>>B cell receptor signaling pathway
<b>Gene Name :</b>	DAPP1
<b>Protein Name :</b>	Dual adapter for phosphotyrosine and 3-phosphotyrosine and 3-phosphoinositide
<b>Human Gene Id :</b>	27071
<b>Human Swiss Prot No :</b>	Q9UN19
<b>Mouse Gene Id :</b>	26377
<b>Mouse Swiss Prot No :</b>	Q9QXT1
<b>Immunogen :</b>	The antiserum was produced against synthesized peptide derived from human DAPP1 around the phosphorylation site of Tyr139. AA range:105-154
<b>Specificity :</b>	Phospho-BAM32 (Y139) Polyclonal Antibody detects endogenous levels of BAM32 protein only when phosphorylated at Y139.
<b>Formulation :</b>	Liquid in PBS containing 50% glycerol, 0.5% BSA and 0.02% sodium azide.
<b>Source :</b>	Polyclonal, Rabbit,IgG
<b>Dilution :</b>	WB 1:500 - 1:2000. IHC 1:100 - 1:300. IF 1:200 - 1:1000. ELISA: 1:5000. Not yet tested in other applications.
<b>Purification :</b>	The antibody was affinity-purified from rabbit antiserum by affinity-chromatography using epitope-specific immunogen.

<b>Concentration :</b>	1 mg/ml
<b>Storage Stability :</b>	-15°C to -25°C/1 year(Do not lower than -25°C)
<b>Observed Band :</b>	32kD
<b>Cell Pathway :</b>	B_Cell_Antigen;
<b>Background :</b>	function:May act as a B-cell-associated adapter that regulates B-cell antigen receptor (BCR)-signaling downstream of PI3K.,induction:Upon B-cell activation.,PTM:Phosphorylated on tyrosine residues.,similarity:Contains 1 PH domain.,similarity:Contains 1 SH2 domain.,subcellular location:Membrane-associated after cell stimulation leading to its translocation.,subunit:Interacts with PtdIns(3,4,5)P3 and PLCG2. In vitro, interacts with PtdIns(3,4)P2.,tissue specificity:Highly expressed in placenta and lung, followed by brain, heart, kidney, liver, pancreas and skeletal muscle. Expressed by B-lymphocytes, but not T-lymphocytes or nonhematopoietic cells.,
<b>Function :</b>	function:May act as a B-cell-associated adapter that regulates B-cell antigen receptor (BCR)-signaling downstream of PI3K.,induction:Upon B-cell activation.,PTM:Phosphorylated on tyrosine residues.,similarity:Contains 1 PH domain.,similarity:Contains 1 SH2 domain.,subcellular location:Membrane-associated after cell stimulation leading to its translocation.,subunit:Interacts with PtdIns(3,4,5)P3 and PLCG2. In vitro, interacts with PtdIns(3,4)P2.,tissue specificity:Highly expressed in placenta and lung, followed by brain, heart, kidney, liver, pancreas and skeletal muscle. Expressed by B-lymphocytes, but not T-lymphocytes or nonhematopoietic cells.,
<b>Subcellular Location :</b>	Cytoplasm . Membrane ; Peripheral membrane protein . Membrane-associated after cell stimulation leading to its translocation.
<b>Expression :</b>	Highly expressed in placenta and lung, followed by brain, heart, kidney, liver, pancreas and skeletal muscle. Expressed by B-lymphocytes, but not T-lymphocytes or nonhematopoietic cells.
<b>Tag :</b>	orthogonal
<b>Sort :</b>	2583
<b>No4 :</b>	1
<b>Host :</b>	Rabbit
<b>Modifications :</b>	Phospho

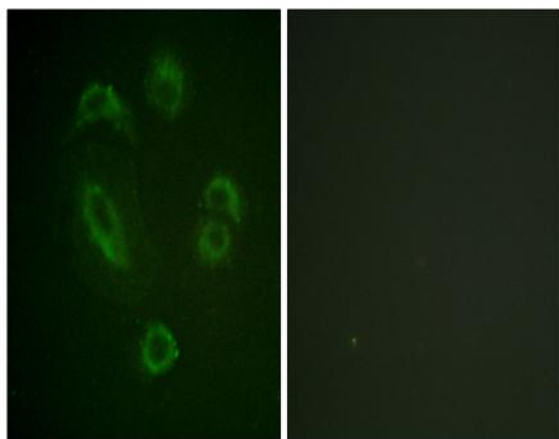
## Products Images



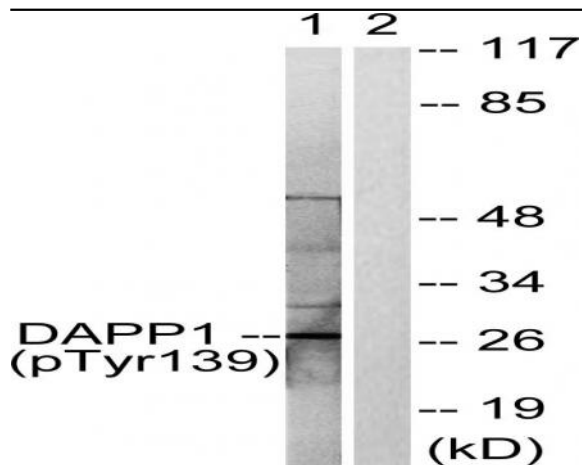
Western Blot analysis of 293 cells using Phospho-BAM32 (Y139) Polyclonal Antibody



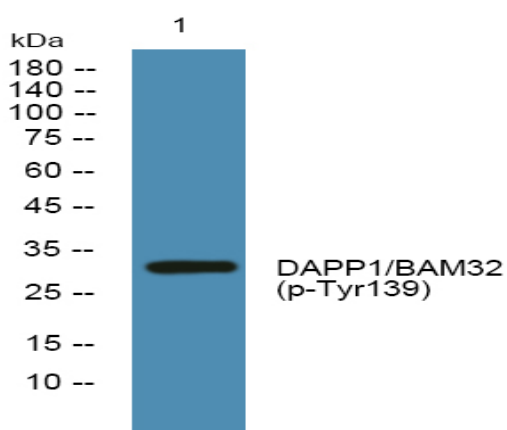
Enzyme-Linked Immunosorbent Assay (Phospho-ELISA) for Immunogen Phosphopeptide (Phospho-left) and Non-Phosphopeptide (Phospho-right), using DAPP1 (Phospho-Tyr139) Antibody



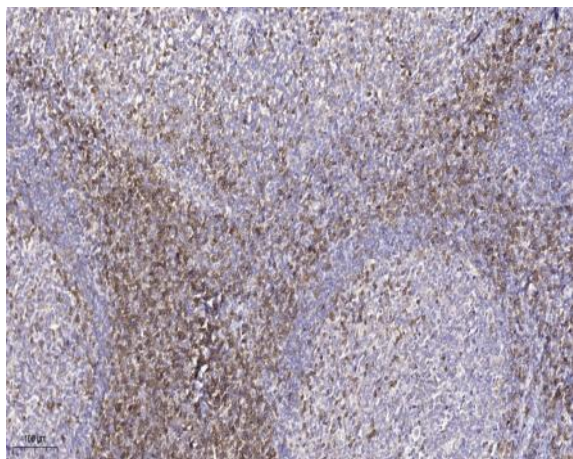
Immunofluorescence analysis of A549 cells, using DAPP1 (Phospho-Tyr139) Antibody. The picture on the right is blocked with the phospho peptide.



Western blot analysis of lysates from 293 cells treated with Insulin 0.01U/ml 2', using DAPP1 (Phospho-Tyr139) Antibody. The lane on the right is blocked with the phospho peptide.



Western blot analysis of lysates from U2OS cells, primary antibody was diluted at 1:1000, 4° over night



Immunohistochemical analysis of paraffin-embedded human tonsil. 1, Tris-EDTA, pH9.0 was used for antigen retrieval. 2 Antibody was diluted at 1:200(4° overnight). 3, Secondary antibody was diluted at 1:200(room temperature, 45min).