

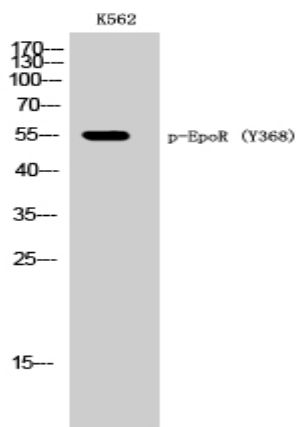
EpoR (phospho Tyr368) Polyclonal Antibody

Catalog No :	YP0552
Reactivity :	Human;Mouse;Rat
Applications :	WB;IF;ELISA
Target :	EpoR
Fields :	>>Cytokine-cytokine receptor interaction;>>PI3K-Akt signaling pathway;>>JAK-STAT signaling pathway;>>Hematopoietic cell lineage;>>Pathways in cancer
Gene Name :	EPOR
Protein Name :	Erythropoietin receptor
Human Gene Id :	2057
Human Swiss Prot No :	P19235
Mouse Gene Id :	13857
Mouse Swiss Prot No :	P14753
Rat Swiss Prot No :	Q07303
Immunogen :	The antiserum was produced against synthesized peptide derived from human Epo-R around the phosphorylation site of Tyr368. AA range:341-390
Specificity :	Phospho-EpoR (Y368) Polyclonal Antibody detects endogenous levels of EpoR protein only when phosphorylated at Y368.
Formulation :	Liquid in PBS containing 50% glycerol, 0.5% BSA and 0.02% sodium azide.
Source :	Polyclonal, Rabbit,IgG
Dilution :	WB 1:500 - 1:2000. IF 1:200 - 1:1000. ELISA: 1:10000. Not yet tested in other applications.

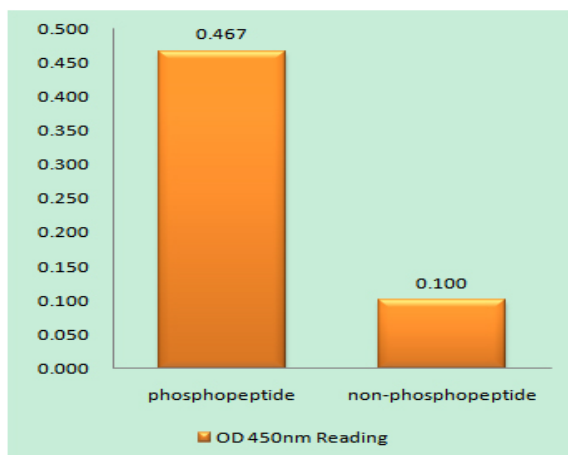
Purification :	The antibody was affinity-purified from rabbit antiserum by affinity-chromatography using epitope-specific immunogen.
Concentration :	1 mg/ml
Storage Stability :	-15°C to -25°C/1 year(Do not lower than -25°C)
Observed Band :	55kD
Cell Pathway :	Cytokine-cytokine receptor interaction;Jak_STAT;Hematopoietic cell lineage;
Background :	This gene encodes the erythropoietin receptor which is a member of the cytokine receptor family. Upon erythropoietin binding, this receptor activates Jak2 tyrosine kinase which activates different intracellular pathways including: Ras/MAP kinase, phosphatidylinositol 3-kinase and STAT transcription factors. The stimulated erythropoietin receptor appears to have a role in erythroid cell survival. Defects in the erythropoietin receptor may produce erythroleukemia and familial erythrocytosis. Dysregulation of this gene may affect the growth of certain tumors. Alternate splicing results in multiple transcript variants.[provided by RefSeq, May 2010],
Function :	disease:Defects in EPOR are the cause of erythrocytosis familial type 1 (ECYT1) [MIM:133100]. ECYT1 is an autosomal dominant disorder characterized by increased serum red blood cell mass, elevated hemoglobin and hematocrit, hypersensitivity of erythroid progenitors to erythropoietin, erythropoietin low serum levels, and no increase in platelets nor leukocytes. It has a relatively benign course and does not progress to leukemia.,domain:Contains 1 copy of a cytoplasmic motif that is referred to as the immunoreceptor tyrosine-based inhibitor motif (ITIM). This motif is involved in modulation of cellular responses. The phosphorylated ITIM motif can bind the SH2 domain of several SH2-containing phosphatases.,domain:The box 1 motif is required for JAK interaction and/or activation.,domain:The WSXWS motif appears to be necessary for proper protein folding and thereby efficient intracellular tra
Subcellular Location :	Cell membrane; Single-pass type I membrane protein.; [Isoform EPOR-S]: Secreted . Secreted and located to the cell surface.
Expression :	Erythroid cells and erythroid progenitor cells. Isoform EPOR-F is the most abundant form in EPO-dependent erythroleukemia cells and in late-stage erythroid progenitors. Isoform EPOR-S and isoform EPOR-T are the predominant forms in bone marrow. Isoform EPOR-T is the most abundant from in early-stage erythroid progenitor cells.
Sort :	5679
No4 :	1

Host : Rabbit**Modifications :** Phospho

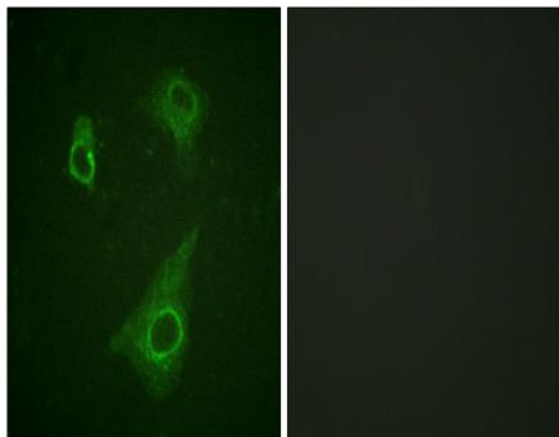
Products Images



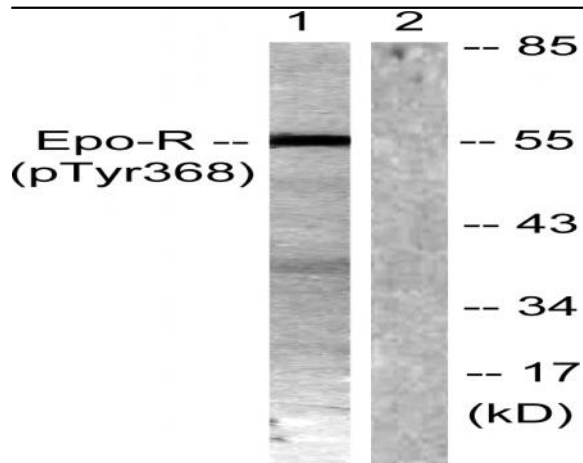
Western Blot analysis of K562 cells using Phospho-EpoR (Y368) Polyclonal Antibody



Enzyme-Linked Immunosorbent Assay (Phospho-ELISA) for Immunogen Phosphopeptide (Phospho-left) and Non-Phosphopeptide (Phospho-right), using Epo-R (Phospho-Tyr368) Antibody



Immunofluorescence analysis of HepG2 cells, using Epo-R (Phospho-Tyr368) Antibody. The picture on the right is blocked with the phospho peptide.



Western blot analysis of lysates from K562 cells, using Epo-R (Phospho-Tyr368) Antibody. The lane on the right is blocked with the phospho peptide.