

ER β (phospho Ser105) Polyclonal Antibody

Catalog No :	YP0553
Reactivity :	Human;Mouse;Rat
Applications :	WB;IF;ELISA
Target :	Estrogen Receptor- β
Fields :	>>Endocrine resistance;>>Estrogen signaling pathway;>>Prolactin signaling pathway;>>GnRH secretion;>>Pathways in cancer;>>Chemical carcinogenesis - receptor activation;>>Breast cancer
Gene Name :	ESR2
Protein Name :	Estrogen receptor beta
Human Gene Id :	2100
Human Swiss Prot No :	Q92731
Mouse Gene Id :	13983
Mouse Swiss Prot No :	O08537
Rat Gene Id :	25149
Rat Swiss Prot No :	Q62986
Immunogen :	The antiserum was produced against synthesized peptide derived from human Estrogen Receptor-beta around the phosphorylation site of Ser105. AA range:71-120
Specificity :	Phospho-ER β (S105) Polyclonal Antibody detects endogenous levels of ER β protein only when phosphorylated at S105.
Formulation :	Liquid in PBS containing 50% glycerol, 0.5% BSA and 0.02% sodium azide.
Source :	Polyclonal, Rabbit,IgG

Dilution : WB 1:500 - 1:2000. IF 1:200 - 1:1000. ELISA: 1:5000. Not yet tested in other applications.

Purification : The antibody was affinity-purified from rabbit antiserum by affinity-chromatography using epitope-specific immunogen.

Concentration : 1 mg/ml

Storage Stability : -15°C to -25°C/1 year(Do not lower than -25°C)

Observed Band : 59kD

Background : This gene encodes a member of the family of estrogen receptors and superfamily of nuclear receptor transcription factors. The gene product contains an N-terminal DNA binding domain and C-terminal ligand binding domain and is localized to the nucleus, cytoplasm, and mitochondria. Upon binding to 17beta-estradiol or related ligands, the encoded protein forms homo- or hetero-dimers that interact with specific DNA sequences to activate transcription. Some isoforms dominantly inhibit the activity of other estrogen receptor family members. Several alternatively spliced transcript variants of this gene have been described, but the full-length nature of some of these variants has not been fully characterized. [provided by RefSeq, Jul 2008],

Function : domain:Composed of three domains: a modulating N-terminal domain, a DNA-binding domain and a C-terminal steroid-binding domain.,function:Nuclear hormone receptor. Binds estrogens with an affinity similar to that of ESR1, and activates expression of reporter genes containing estrogen response elements (ERE) in an estrogen-dependent manner. Isoform beta-cx lacks ligand binding ability and has no or only very low ere binding activity resulting in the loss of ligand-dependent transactivation ability. DNA-binding by ESR1 and ESR2 is rapidly lost at 37 degrees Celsius in the absence of ligand while in the presence of 17 beta-estradiol and 4-hydroxy-tamoxifen loss in DNA-binding at elevated temperature is more gradual.,online information:Estrogen receptor entry,similarity:Belongs to the nuclear hormone receptor family.,similarity:Belongs to the nuclear hormone receptor family. NR3 subfamily.,si

Subcellular Location : Nucleus .

Expression : [Isoform 1]: Expressed in testis and ovary, and at a lower level in heart, brain, placenta, liver, skeletal muscle, spleen, thymus, prostate, colon, bone marrow, mammary gland and uterus. Also found in uterine bone, breast, and ovarian tumor cell lines, but not in colon and liver tumors. ; [Isoform 2]: Expressed in spleen, thymus, testis and ovary and at a lower level in skeletal muscle, prostate, colon, small intestine, leukocytes, bone marrow, mammary gland and uterus. ; [Isoform 4]: Expressed in the testis. ; [Isoform 5]: Expressed in testis, and at a lower level in spleen, thymus, ovary, mammary gland and uterus. ; [Isoform 6]: Expressed in testis, placenta, skeletal muscle, spleen and leukocytes, and at a lower level in

heart, lung, liver, kidney, pancreas, thymus, prostate, colon, sm

Tag : hot

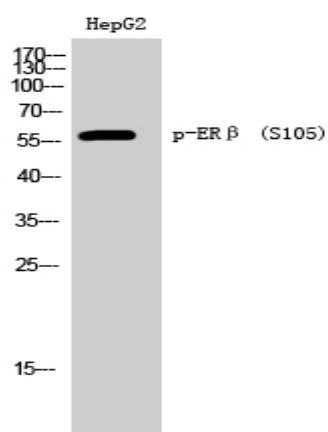
Sort : 5762

No4 : 1

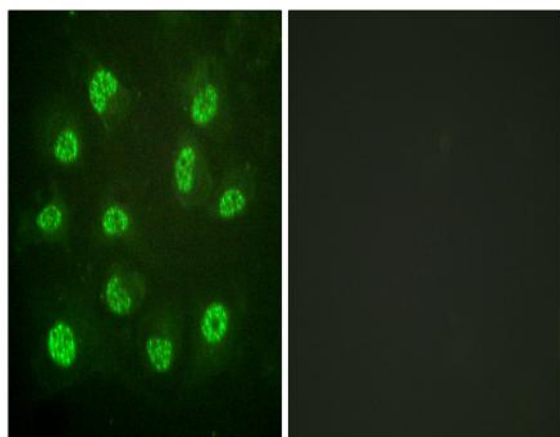
Host : Rabbit

Modifications : Phospho

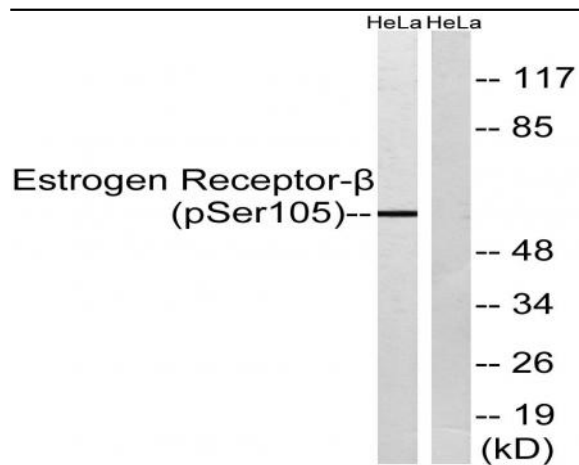
Products Images



Western Blot analysis of HepG2 cells using Phospho-ER β (S105) Polyclonal Antibody



Immunofluorescence analysis of HUVEC cells, using Estrogen Receptor-beta (Phospho-Ser105) Antibody. The picture on the right is blocked with the phospho peptide.



Western blot analysis of lysates from HeLa cells, using Estrogen Receptor-beta (Phospho-Ser105) Antibody. The lane on the right is blocked with the phospho peptide.