

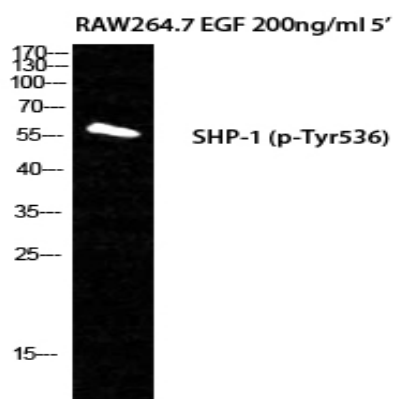
SH-PTP1 (phospho Tyr536) Polyclonal Antibody

Catalog No :	YP0580
Reactivity :	Human;Mouse;Rat
Applications :	WB;IHC;IF;ELISA
Target :	SH-PTP1
Fields :	>>Adherens junction;>>JAK-STAT signaling pathway;>>Natural killer cell mediated cytotoxicity;>>T cell receptor signaling pathway;>>B cell receptor signaling pathway;>>Pathogenic Escherichia coli infection;>>Leishmaniasis;>>Proteoglycans in cancer;>>PD-L1 expression and PD-1 checkpoint pathway in cancer
Gene Name :	PTPN6
Protein Name :	Tyrosine-protein phosphatase non-receptor type 6
Human Gene Id :	5777
Human Swiss Prot No :	P29350
Mouse Gene Id :	15170
Mouse Swiss Prot No :	P29351
Rat Gene Id :	116689
Rat Swiss Prot No :	P81718
Immunogen :	The antiserum was produced against synthesized peptide derived from human SHP-1 around the phosphorylation site of Tyr536. AA range:502-551
Specificity :	Phospho-SH-PTP1 (Y536) Polyclonal Antibody detects endogenous levels of SH-PTP1 protein only when phosphorylated at Y536.
Formulation :	Liquid in PBS containing 50% glycerol, 0.5% BSA and 0.02% sodium azide.

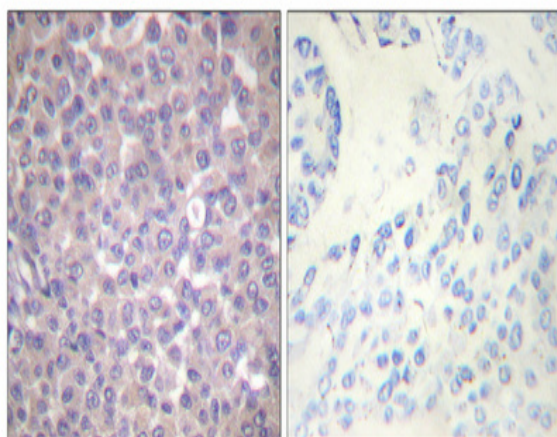
Source :	Polyclonal, Rabbit,IgG
Dilution :	WB 1:500 - 1:2000. IHC 1:100 - 1:300. ELISA: 1:10000.. IF 1:50-200
Purification :	The antibody was affinity-purified from rabbit antiserum by affinity-chromatography using epitope-specific immunogen.
Concentration :	1 mg/ml
Storage Stability :	-15°C to -25°C/1 year(Do not lower than -25°C)
Observed Band :	67kD
Cell Pathway :	B_Cell_Antigen; Adherens_Junction; T_Cell_Receptor; MAPK; Protein_Acetylation
Background :	<p>The protein encoded by this gene is a member of the protein tyrosine phosphatase (PTP) family. PTPs are known to be signaling molecules that regulate a variety of cellular processes including cell growth, differentiation, mitotic cycle, and oncogenic transformation. N-terminal part of this PTP contains two tandem Src homolog (SH2) domains, which act as protein phospho-tyrosine binding domains, and mediate the interaction of this PTP with its substrates. This PTP is expressed primarily in hematopoietic cells, and functions as an important regulator of multiple signaling pathways in hematopoietic cells. This PTP has been shown to interact with, and dephosphorylate a wide spectrum of phospho-proteins involved in hematopoietic cell signaling. Multiple alternatively spliced variants of this gene, which encode distinct isoforms, have been reported. [provided by RefSeq, Jul</p>
Function :	<p>catalytic activity:Protein tyrosine phosphate + H(2)O = protein tyrosine + phosphate.,function:Plays a key role in hematopoiesis. This PTPase activity may directly link growth factor receptors and other signaling proteins through protein-tyrosine phosphorylation. The SH2 regions may interact with other cellular components to modulate its own phosphatase activity against interacting substrates. Together with MTUS1, induces UBE2V2 expression upon angiotensin II stimulation.,PTM:Phosphorylated on serine and tyrosine residues.,similarity:Belongs to the protein-tyrosine phosphatase family. Non-receptor class 2 subfamily.,similarity:Contains 1 tyrosine-protein phosphatase domain.,similarity:Contains 2 SH2 domains.,subcellular location:In neurons, translocates into the nucleus after treatment with angiotensin II.,subunit:Monomer. Interacts with MTUS1 (By similarity). Binds PTPNS1, LILRB1 and LI</p>
Subcellular Location :	<p>Cytoplasm. Nucleus. In neurons, translocates into the nucleus after treatment with angiotensin II (By similarity). Shuttles between the cytoplasm and nucleus via its association with PDPK1. .</p> <p>Isoform 1 is expressed in hematopoietic cells. Isoform 2 is expressed in non-</p>

Expression :	hematopoietic cells.
Tag :	orthogonal,hot
Sort :	16316
No4 :	1
Host :	Rabbit
Modifications :	Phospho

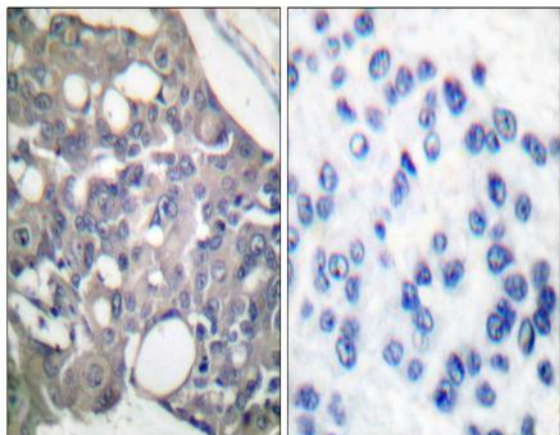
Products Images



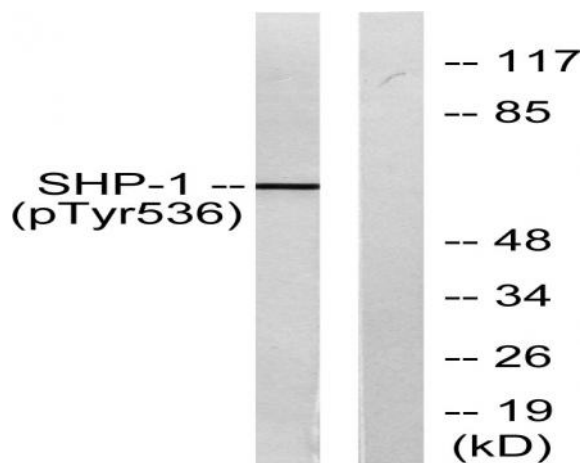
Western Blot analysis of RAW264.7+EGF cells using Phospho-SH-PTP1 (Y536) Polyclonal Antibody



Immunohistochemical analysis of paraffin-embedded Human breast cancer. Antibody was diluted at 1:100(4° overnight). High-pressure and temperature Tris-EDTA,pH8.0 was used for antigen retrieval. Negative contrl (right) obtained from antibody was pre-absorbed by immunogen peptide.



Immunohistochemistry analysis of paraffin-embedded human breast carcinoma, using SHP-1 (Phospho-Tyr536) Antibody. The picture on the right is blocked with the phospho peptide.



Western blot analysis of lysates from RAW264.7 cells treated with EGF 200ng/ml 5', using SHP-1 (Phospho-Tyr536) Antibody. The lane on the right is blocked with the phospho peptide.