

Cdc6 (phospho Ser54) Polyclonal Antibody

Catalog No :	YP0623
Reactivity :	Human;Mouse;Monkey
Applications :	WB;IHC;IF;ELISA
Target :	Cdc6
Fields :	>>Cell cycle;>>Chemical carcinogenesis - receptor activation
Gene Name :	CDC6
Protein Name :	Cell division control protein 6 homolog
Human Gene Id :	990
Human Swiss Prot No :	Q99741
Mouse Gene Id :	23834
Mouse Swiss Prot No :	O89033
Immunogen :	The antiserum was produced against synthesized peptide derived from human CDC6 around the phosphorylation site of Ser54. AA range:20-69
Specificity :	Phospho-Cdc6 (S54) Polyclonal Antibody detects endogenous levels of Cdc6 protein only when phosphorylated at S54.
Formulation :	Liquid in PBS containing 50% glycerol, 0.5% BSA and 0.02% sodium azide.
Source :	Polyclonal, Rabbit,IgG
Dilution :	WB 1:500 - 1:2000. IHC 1:100 - 1:300. ELISA: 1:5000.. IF 1:50-200
Purification :	The antibody was affinity-purified from rabbit antiserum by affinity-chromatography using epitope-specific immunogen.
Concentration :	1 mg/ml

Storage Stability : -15°C to -25°C/1 year(Do not lower than -25°C)

Observed Band : 62kD

Cell Pathway : Cell_Cycle_G1S;Cell_Cycle_G2M_DNA;

Background : The protein encoded by this gene is highly similar to Saccharomyces cerevisiae Cdc6, a protein essential for the initiation of DNA replication. This protein functions as a regulator at the early steps of DNA replication. It localizes in cell nucleus during cell cycle G1, but translocates to the cytoplasm at the start of S phase. The subcellular translocation of this protein during cell cycle is regulated through its phosphorylation by Cdks. Transcription of this protein was reported to be regulated in response to mitogenic signals through transcriptional control mechanism involving E2F proteins. [provided by RefSeq, Jul 2008],

Function : function:Involved in the initiation of DNA replication. Also participates in checkpoint controls that ensure DNA replication is completed before mitosis is initiated.,similarity:Belongs to the CDC6/cdc18 family.,subcellular location:The protein is nuclear in G1 and cytoplasmic in S-phase cells.,subunit:Interacts with PCNA, ORC1L, cyclin-CDK and HUWE1.,

Subcellular Location : Nucleus . Cytoplasm . The protein is nuclear in G1 and cytoplasmic in S-phase cells (PubMed:9566895). .

Expression : Brain,Epithelium,

Tag : orthogonal

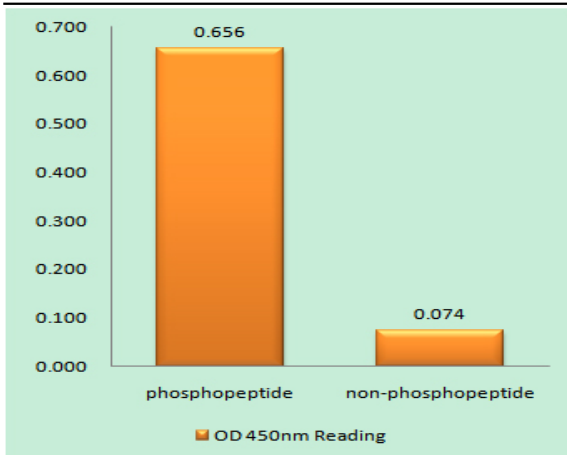
Sort : 3757

No4 : 1

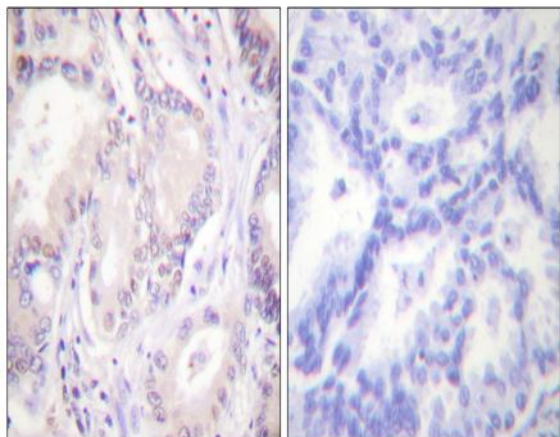
Host : Rabbit

Modifications : Phospho

Products Images



Enzyme-Linked Immunosorbent Assay (Phospho-ELISA) for Immunogen Phosphopeptide (Phospho-left) and Non-Phosphopeptide (Phospho-right), using CDC6 (Phospho-Ser54) Antibody



Immunohistochemistry analysis of paraffin-embedded human lung carcinoma, using CDC6 (Phospho-Ser54) Antibody. The picture on the right is blocked with the phospho peptide.



Western blot analysis of lysates from COS7 cells treated with EGF 200ng/ml 30', using CDC6 (Phospho-Ser54) Antibody. The lane on the right is blocked with the phospho peptide.