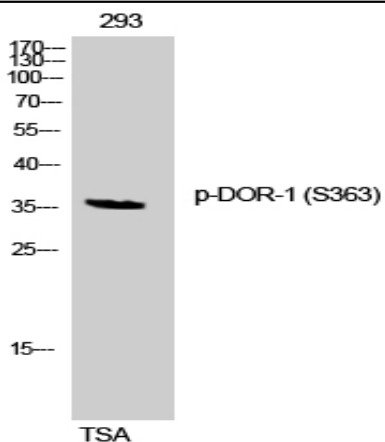


DOR-1 (phospho Ser363) Polyclonal Antibody

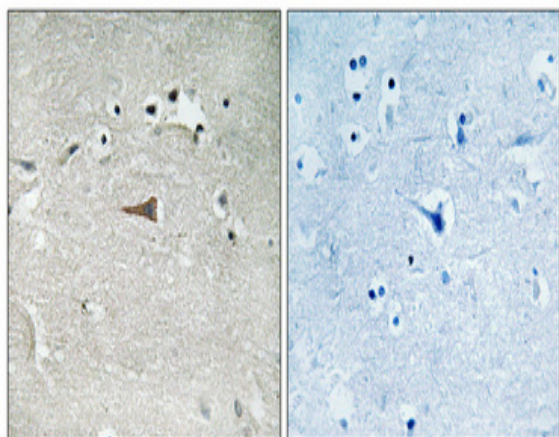
Catalog No :	YP0626
Reactivity :	Human;Mouse;Rat
Applications :	WB;IHC;IF;ELISA
Target :	DOR-1
Fields :	>>cGMP-PKG signaling pathway;>>Sphingolipid signaling pathway;>>Neuroactive ligand-receptor interaction
Gene Name :	OPRD1
Protein Name :	Delta-type opioid receptor
Human Gene Id :	4985
Human Swiss Prot No :	P41143
Mouse Gene Id :	18386
Mouse Swiss Prot No :	P32300
Rat Gene Id :	24613
Rat Swiss Prot No :	P33533
Immunogen :	The antiserum was produced against synthesized peptide derived from human Opioid Receptor-delta around the phosphorylation site of Ser363. AA range:323-372
Specificity :	Phospho-DOR-1 (S363) Polyclonal Antibody detects endogenous levels of DOR-1 protein only when phosphorylated at S363.
Formulation :	Liquid in PBS containing 50% glycerol, 0.5% BSA and 0.02% sodium azide.
Source :	Polyclonal, Rabbit,IgG

Dilution :	WB 1:500 - 1:2000. IHC 1:100 - 1:300. ELISA: 1:5000.. IF 1:50-200
Purification :	The antibody was affinity-purified from rabbit antiserum by affinity-chromatography using epitope-specific immunogen.
Concentration :	1 mg/ml
Storage Stability :	-15°C to -25°C/1 year(Do not lower than -25°C)
Observed Band :	36kD
Cell Pathway :	Neuroactive ligand-receptor interaction;
Background :	function:Inhibits neurotransmitter release by reducing calcium ion currents and increasing potassium ion conductance. Highly stereoselective. receptor for enkephalins.,online information:Delta opioid receptor entry,similarity:Belongs to the G-protein coupled receptor 1 family.,subunit:Interacts with GPRASP1.,
Function :	function:Inhibits neurotransmitter release by reducing calcium ion currents and increasing potassium ion conductance. Highly stereoselective. receptor for enkephalins.,online information:Delta opioid receptor entry,similarity:Belongs to the G-protein coupled receptor 1 family.,subunit:Interacts with GPRASP1.,
Subcellular Location :	Cell membrane ; Multi-pass membrane protein .
Expression :	Detected in oocytes (at protein level). Detected in brain cortex, hypothalamus, hippocampus and olfactory bulb. Detected in oocytes.
Tag :	orthogonal
Sort :	5230
No4 :	1
Host :	Rabbit
Modifications :	Phospho

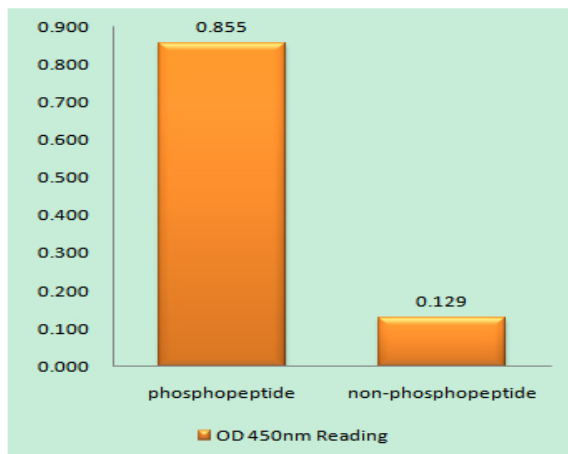
Products Images



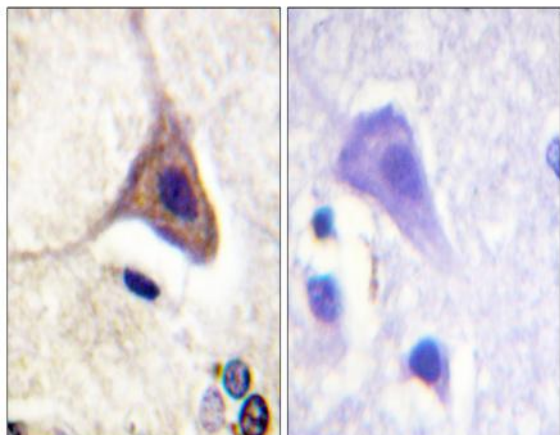
Western Blot analysis of 293 cells using Phospho-DOR-1 (S363) Polyclonal Antibody



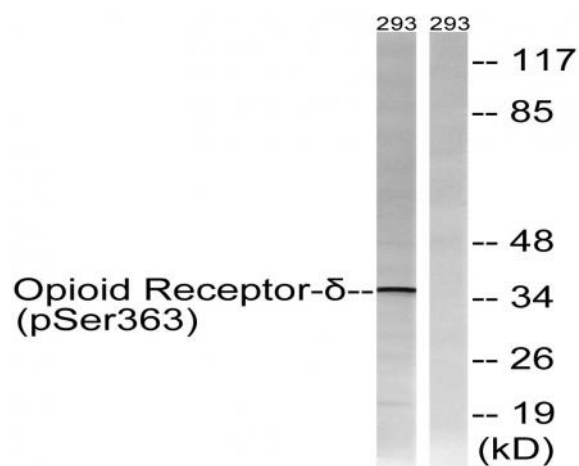
Immunohistochemical analysis of paraffin-embedded Human brain. Antibody was diluted at 1:100(4° overnight). High-pressure and temperature Tris-EDTA,pH8.0 was used for antigen retrieval. Negative control (right) obtained from antibody was pre-absorbed by immunogen peptide.



Enzyme-Linked Immunosorbent Assay (Phospho-ELISA) for Immunogen Phosphopeptide (Phospho-left) and Non-Phosphopeptide (Phospho-right), using Opioid Receptor-delta (Phospho-Ser363) Antibody



Immunohistochemistry analysis of paraffin-embedded human brain, using Opioid Receptor-delta (Phospho-Ser363) Antibody. The picture on the right is blocked with the phospho peptide.



Western blot analysis of lysates from 293 cells treated with TSA 400nM 24h, using Opioid Receptor-delta (Phospho-Ser363) Antibody. The lane on the right is blocked with the phospho peptide.