

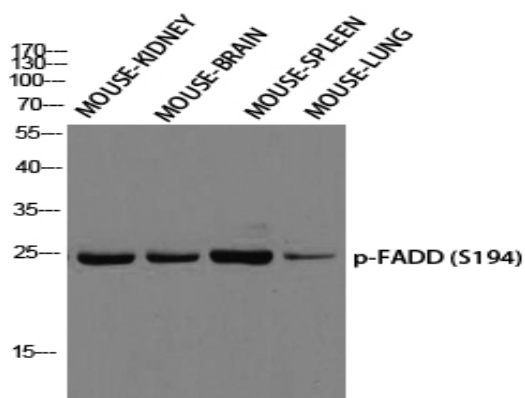
FADD (phospho Ser194) Polyclonal Antibody

Catalog No :	YP0628
Reactivity :	Human;Mouse
Applications :	WB;IHC;IF;ELISA
Target :	FADD
Fields :	>>Platinum drug resistance;>>Apoptosis;>>Apoptosis - multiple species;>>Necroptosis;>>Toll-like receptor signaling pathway;>>NOD-like receptor signaling pathway;>>RIG-I-like receptor signaling pathway;>>IL-17 signaling pathway;>>TNF signaling pathway;>>Alcoholic liver disease;>>Alzheimer disease;>>Pathways of neurodegeneration - multiple diseases;>>Pathogenic Escherichia coli infection;>>Salmonella infection;>>Chagas disease;>>Tuberculosis;>>Hepatitis C;>>Hepatitis B;>>Measles;>>Human cytomegalovirus infection;>>Influenza A;>>Human papillomavirus infection;>>Kaposi sarcoma-associated herpesvirus infection;>>Herpes simplex virus 1 infection;>>Epstein-Barr virus infection;>>Human immunodeficiency virus 1 infection;>>Pathways in cancer
Gene Name :	FADD
Protein Name :	Protein FADD
Human Gene Id :	8772
Human Swiss Prot No :	Q13158
Mouse Swiss Prot No :	Q61160
Immunogen :	The antiserum was produced against synthesized peptide derived from human FADD around the phosphorylation site of Ser194. AA range:159-208
Specificity :	Phospho-FADD (S194) Polyclonal Antibody detects endogenous levels of FADD protein only when phosphorylated at S194.
Formulation :	Liquid in PBS containing 50% glycerol, 0.5% BSA and 0.02% sodium azide.
Source :	Polyclonal, Rabbit,IgG

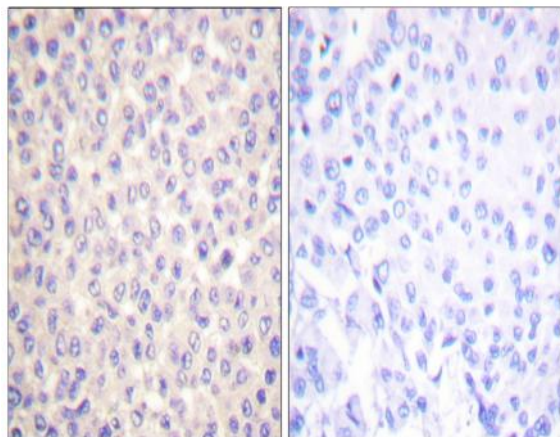
Dilution :	<u>WB 1:500 - 1:2000. IHC 1:100 - 1:300. ELISA: 1:5000.. IF 1:50-200</u>
Purification :	<u>The antibody was affinity-purified from rabbit antiserum by affinity-chromatography using epitope-specific immunogen.</u>
Concentration :	<u>1 mg/ml</u>
Storage Stability :	<u>-15°C to -25°C/1 year(Do not lower than -25°C)</u>
Observed Band :	<u>28kD</u>
Cell Pathway :	<u>Apoptosis_Inhibition;Apoptosis_Mitochondrial;Apoptosis_Overview;Toll_Like;RI G-I-like receptor;Alzheimer's disease;Pathways in cancer;</u>
Background :	<u>The protein encoded by this gene is an adaptor molecule that interacts with various cell surface receptors and mediates cell apoptotic signals. Through its C-terminal death domain, this protein can be recruited by TNFRSF6/Fas-receptor, tumor necrosis factor receptor, TNFRSF25, and TNFSF10/TRAIL-receptor, and thus it participates in the death signaling initiated by these receptors. Interaction of this protein with the receptors unmasks the N-terminal effector domain of this protein, which allows it to recruit caspase-8, and thereby activate the cysteine protease cascade. Knockout studies in mice also suggest the importance of this protein in early T cell development. [provided by RefSeq, Jul 2008],</u>
Function :	<u>domain:Contains a death domain involved in the binding of the corresponding domain within Fas receptor.,function:Apoptotic adaptor molecule that recruits caspase-8 or caspase-10 to the activated Fas (CD95) or TNFR-1 receptors. The resulting aggregate called the death-inducing signaling complex (DISC) performs caspase-8 proteolytic activation. Active caspase-8 initiates the subsequent cascade of caspases mediating apoptosis.,PTM:Phosphorylated.,similarity:Contains 1 death domain.,similarity:Contains 1 DED (death effector) domain.,subunit:Interacts with CFLAR, PEA15 and MBD4. When phosphorylated, part of a complex containing HIPK3 and FAS. May interact with MAVS/IPS1. Interacts with MOCV v-CFLAR protein and LRDD.,tissue specificity:Expressed in a wide variety of tissues, except for peripheral blood mononuclear leukocytes.,</u>
Subcellular Location :	<u>cytoplasm,cytosol,plasma membrane,death-inducing signaling complex,CD95 death-inducing signaling complex,neuron projection,cell body,membrane raft,rioptosome,</u>
Expression :	<u>Expressed in a wide variety of tissues, except for peripheral blood mononuclear leukocytes.</u>
Tag :	<u>orthogonal</u>

Sort :	5899
No2 :	2781S
No4 :	1
Host :	Rabbit
Modifications :	Phospho

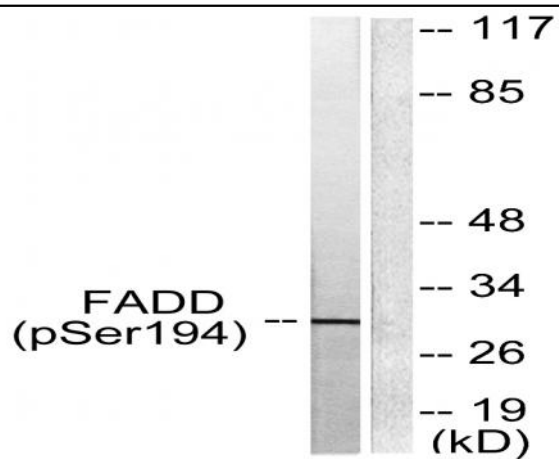
Products Images



Western blot analysis of MOUSE-KIDNEY, MOUSE-BRAIN, MOUSE-SPLEEN, and MOUSE-LUNG using p-FADD (S194) antibody. Antibody was diluted at 1:1000.



Immunohistochemistry analysis of paraffin-embedded human breast carcinoma, using FADD (Phospho-Ser194) Antibody. The picture on the right is blocked with the phospho peptide.



Western blot analysis of lysates from HeLa cells treated with Paclitaxel 1uM 60', using FADD (Phospho-Ser194) Antibody. The lane on the right is blocked with the phospho peptide.