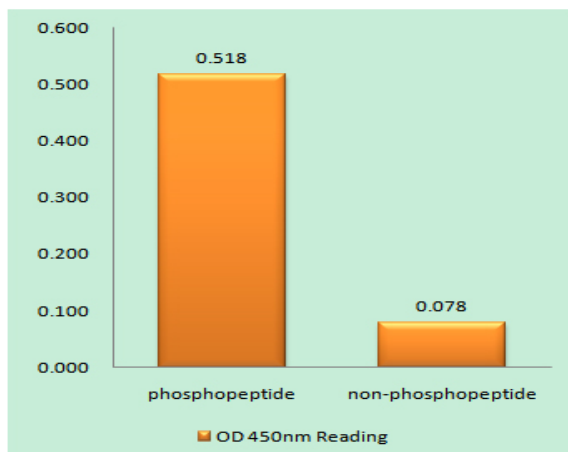


**PDE4B/C/D (phospho Ser133/119/190) Polyclonal Antibody**

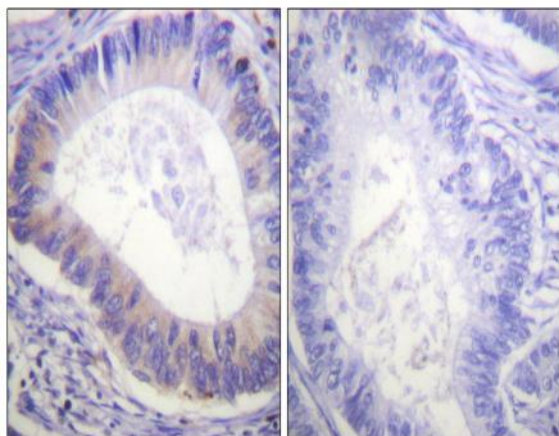
<b>Catalog No :</b>	YP0668
<b>Reactivity :</b>	Human;Mouse;Rat
<b>Applications :</b>	WB;IHC;IF;ELISA
<b>Target :</b>	PDE4B/C/D
<b>Fields :</b>	>>Purine metabolism;>>Metabolic pathways;>>cAMP signaling pathway;>>Parathyroid hormone synthesis, secretion and action;>>Morphine addiction
<b>Gene Name :</b>	PDE4B/PDE4C/PDE4D
<b>Protein Name :</b>	cAMP-specific 3',5'-cyclic phosphodiesterase 4D
<b>Human Gene Id :</b>	5144
<b>Human Swiss Prot No :</b>	Q07343/Q08493/Q08499
<b>Mouse Gene Id :</b>	110385/238871
<b>Rat Gene Id :</b>	24626/24627
<b>Rat Swiss Prot No :</b>	P14646/P14644/P14270
<b>Immunogen :</b>	The antiserum was produced against synthesized peptide derived from human PDE4D around the phosphorylation site of Ser190/53. AA range:156-205
<b>Specificity :</b>	Phospho-PDE4B/C/D (S133/119/190) Polyclonal Antibody detects endogenous levels of PDE4B/C/D protein only when phosphorylated at S133/119/190.
<b>Formulation :</b>	Liquid in PBS containing 50% glycerol, 0.5% BSA and 0.02% sodium azide.
<b>Source :</b>	Polyclonal, Rabbit,IgG
<b>Dilution :</b>	WB 1:500 - 1:2000. IHC 1:100 - 1:300. ELISA: 1:20000.. IF 1:50-200

<b>Purification :</b>	The antibody was affinity-purified from rabbit antiserum by affinity-chromatography using epitope-specific immunogen.
<b>Concentration :</b>	1 mg/ml
<b>Storage Stability :</b>	-15°C to -25°C/1 year(Do not lower than -25°C)
<b>Observed Band :</b>	76kD
<b>Cell Pathway :</b>	Purine metabolism;
<b>Background :</b>	This gene is a member of the type IV, cyclic AMP (cAMP)-specific, cyclic nucleotide phosphodiesterase (PDE) family. The encoded protein regulates the cellular concentrations of cyclic nucleotides and thereby play a role in signal transduction. Altered activity of this protein has been associated with schizophrenia and bipolar affective disorder. Alternative splicing and the use of alternative promoters results in multiple transcript variants encoding different isoforms. [provided by RefSeq, Jul 2014],
<b>Function :</b>	alternative products:Additional isoforms seem to exist,catalytic activity:Adenosine 3',5'-cyclic phosphate + H(2)O = adenosine 5'-phosphate.,enzyme regulation:Inhibited by rolipram.,function:May be involved in mediating central nervous system effects of therapeutic agents ranging from antidepressants to antiasthmatic and anti-inflammatory agents.,pathway:Purine metabolism; cAMP degradation; AMP from cAMP: step 1/1.,similarity:Belongs to the cyclic nucleotide phosphodiesterase family.,tissue specificity:Expressed in brain, heart, lung and skeletal muscle.,
<b>Subcellular Location :</b>	[Isoform PDE4B5]: Cytoplasm . Cell membrane .
<b>Expression :</b>	Expressed in brain, heart, lung and skeletal muscle (PubMed:17519386). Expressed in white blood cells (PubMed:8392015). ; [Isoform PDE4B5]: Brain-specific isoform.
<b>Tag :</b>	orthogonal
<b>Sort :</b>	1
<b>No4 :</b>	1
<b>Host :</b>	Rabbit
<b>Modifications :</b>	Phospho

## Products Images



Enzyme-Linked Immunosorbent Assay (Phospho-ELISA) for Immunogen Phosphopeptide (Phospho-left) and Non-Phosphopeptide (Phospho-right), using PDE4D (Phospho-Ser190/53) Antibody



Immunohistochemistry analysis of paraffin-embedded human colon carcinoma, using PDE4D (Phospho-Ser190/53) Antibody. The picture on the right is blocked with the phospho peptide.



Western blot analysis of lysates from K562 cells treated with H<sub>2</sub>O<sub>2</sub> 100uM 30', using PDE4D (Phospho-Ser190/53) Antibody. The lane on the right is blocked with the phospho peptide.