

Flt-1/VEGFR1 (phospho Tyr1333) Polyclonal Antibody

Catalog No :	YP0678
Reactivity :	Human;Mouse;Rat
Applications :	WB;IHC;IF;ELISA
Target :	Flt-1
Fields :	>>MAPK signaling pathway;>>Ras signaling pathway;>>Rap1 signaling pathway;>>Calcium signaling pathway;>>HIF-1 signaling pathway;>>PI3K-Akt signaling pathway;>>Focal adhesion;>>Transcriptional misregulation in cancer;>>Rheumatoid arthritis
Gene Name :	FLT1
Protein Name :	Vascular endothelial growth factor receptor 1
Human Gene Id :	2321
Human Swiss Prot No :	P17948
Mouse Gene Id :	14254
Mouse Swiss Prot No :	P35969
Rat Gene Id :	54251
Rat Swiss Prot No :	P53767
Immunogen :	The antiserum was produced against synthesized peptide derived from human VEGFR1 around the phosphorylation site of Tyr1333. AA range:1289-1338
Specificity :	Phospho-Flt-1 (Y1333) Polyclonal Antibody detects endogenous levels of Flt-1 protein only when phosphorylated at Y1333.
Formulation :	Liquid in PBS containing 50% glycerol, 0.5% BSA and 0.02% sodium azide.
Source :	Polyclonal, Rabbit,IgG

Dilution :	WB 1:500 - 1:2000. IHC: 1:100-300 ELISA: 1:20000. IF 1:100-300 Not yet tested in other applications.
Purification :	The antibody was affinity-purified from rabbit antiserum by affinity-chromatography using epitope-specific immunogen.
Concentration :	1 mg/ml
Storage Stability :	-15°C to -25°C/1 year(Do not lower than -25°C)
Observed Band :	151kD
Cell Pathway :	Cytokine-cytokine receptor interaction;Endocytosis;Focal adhesion;
Background :	<p>This gene encodes a member of the vascular endothelial growth factor receptor (VEGFR) family. VEGFR family members are receptor tyrosine kinases (RTKs) which contain an extracellular ligand-binding region with seven immunoglobulin (Ig)-like domains, a transmembrane segment, and a tyrosine kinase (TK) domain within the cytoplasmic domain. This protein binds to VEGFR-A, VEGFR-B and placental growth factor and plays an important role in angiogenesis and vasculogenesis. Expression of this receptor is found in vascular endothelial cells, placental trophoblast cells and peripheral blood monocytes. Multiple transcript variants encoding different isoforms have been found for this gene. Isoforms include a full-length transmembrane receptor isoform and shortened, soluble isoforms. The soluble isoforms are associated with the onset of pre-eclampsia.[provided by RefSeq, May 2009],</p>
Function :	<p>alternative products:Additional isoforms seem to exist,catalytic activity:ATP + a [protein]-L-tyrosine = ADP + a [protein]-L-tyrosine phosphate.,function:Receptor for VEGF, VEGFB and PGF. Has a tyrosine-protein kinase activity. The VEGF-kinase ligand/receptor signaling system plays a key role in vascular development and regulation of vascular permeability. Isoform SFlt1 may have an inhibitory role in angiogenesis.,similarity:Belongs to the protein kinase superfamily. Tyr protein kinase family.,similarity:Belongs to the protein kinase superfamily. Tyr protein kinase family. CSF-1/PDGF receptor subfamily.,similarity:Contains 1 protein kinase domain.,similarity:Contains 7 Ig-like C2-type (immunoglobulin-like) domains.,subunit:Interacts in vitro with various phosphotyrosine-binding proteins, including PLC-gammas, PTPN11, GRB2, CRK and NCK1.,tissue specificity:Mostly in normal lung, but also</p>
Subcellular Location :	[Isoform 1]: Cell membrane; Single-pass type I membrane protein. Endosome. Autophosphorylation promotes ubiquitination and endocytosis.; [Isoform 2]: Secreted .; [Isoform 3]: Secreted.; [Isoform 4]: Secreted.; [Isoform 5]: Cytoplasm .; [Isoform 6]: Cytoplasm .; [Isoform 7]: Cytoplasm .
Expression :	Detected in normal lung, but also in placenta, liver, kidney, heart and brain tissues. Specifically expressed in most of the vascular endothelial cells, and also

expressed in peripheral blood monocytes. Isoform 2 is strongly expressed in placenta. Isoform 3 is expressed in corneal epithelial cells (at protein level). Isoform 3 is expressed in vascular smooth muscle cells (VSMC).

Tag : orthogonal,hot

Sort : 1425

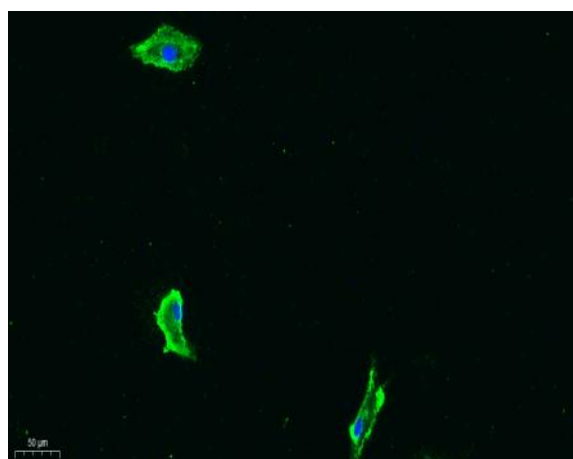
No3 : ab38464

No4 : 1

Host : Rabbit

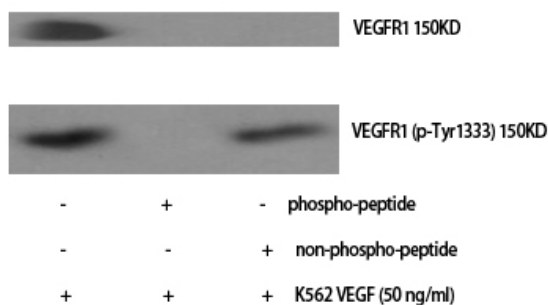
Modifications : Phospho

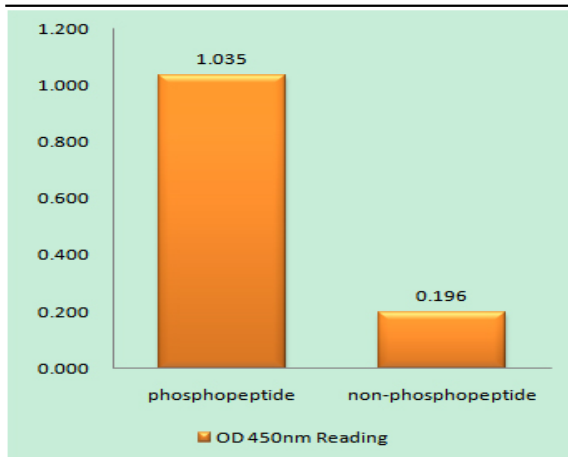
Products Images



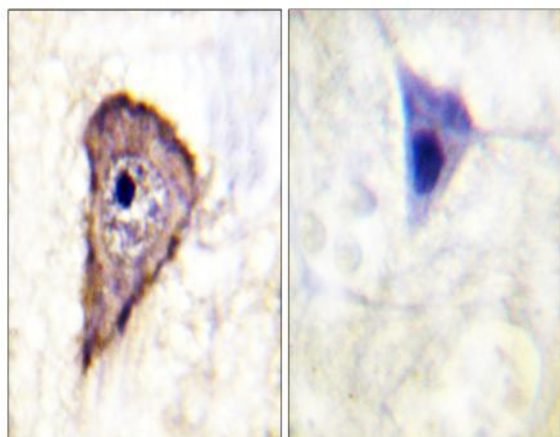
Immunofluorescence analysis of A549. 1,primary Antibody was diluted at 1:200(4°C overnight). 2, Goat Anti Rabbit IgG (H&L) - Alexa Fluor 488 Secondary antibody was diluted at 1:1000(room temperature, 50min).3, Picture B: DAPI(blue) 10min.

Western Blot analysis of various cells using Phospho-Flt-1 (Y1333) Polyclonal Antibody

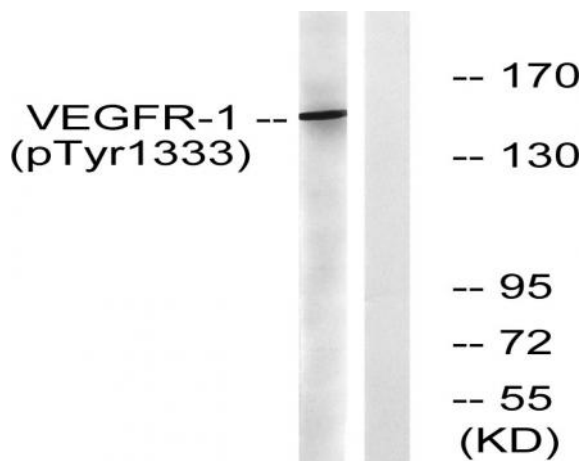




Enzyme-Linked Immunosorbent Assay (Phospho-ELISA) for Immunogen Phosphopeptide (Phospho-left) and Non-Phosphopeptide (Phospho-right), using VEGFR1 (Phospho-Tyr1333) Antibody



Immunohistochemistry analysis of paraffin-embedded human brain, using VEGFR1 (Phospho-Tyr1333) Antibody. The picture on the right is blocked with the phospho peptide.



Western blot analysis of lysates from K562 cells treated with etoposide 25uM 24h, using VEGFR1 (Phospho-Tyr1333) Antibody. The lane on the right is blocked with the phospho peptide.