

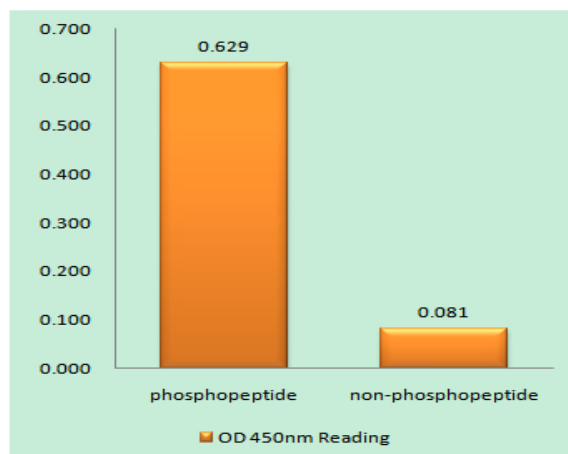
c-Fms (phospho Tyr723) Polyclonal Antibody

Catalog No :	YP0693
Reactivity :	Human;Mouse;Rat
Applications :	WB;IHC;IF;ELISA
Target :	c-Fms
Fields :	>>MAPK signaling pathway;>>Ras signaling pathway;>>Rap1 signaling pathway;>>Cytokine-cytokine receptor interaction;>>Viral protein interaction with cytokine and cytokine receptor;>>PI3K-Akt signaling pathway;>>Osteoclast differentiation;>>Hematopoietic cell lineage;>>Pathways in cancer;>>Transcriptional misregulation in cancer;>>Acute myeloid leukemia
Gene Name :	CSF1R
Protein Name :	Macrophage colony-stimulating factor 1 receptor
Human Gene Id :	1436
Human Swiss Prot No :	P07333
Mouse Gene Id :	12978
Mouse Swiss Prot No :	P09581
Rat Swiss Prot No :	Q00495
Immunogen :	The antiserum was produced against synthesized peptide derived from human M-CSF Receptor around the phosphorylation site of Tyr723. AA range:691-740
Specificity :	Phospho-c-Fms (Y723) Polyclonal Antibody detects endogenous levels of c-Fms protein only when phosphorylated at Y723.
Formulation :	Liquid in PBS containing 50% glycerol, 0.5% BSA and 0.02% sodium azide.
Source :	Polyclonal, Rabbit,IgG

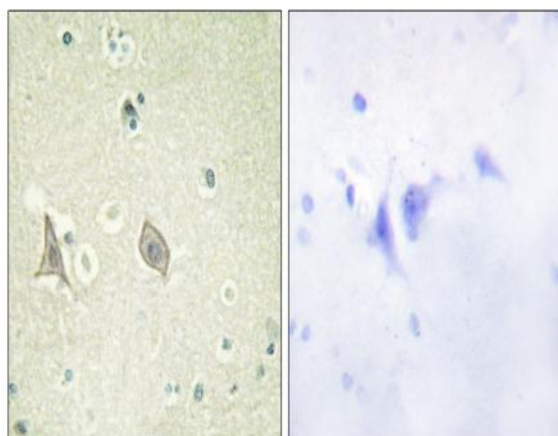
Dilution :	WB 1:500 - 1:2000. IHC 1:100 - 1:300. ELISA: 1:5000.. IF 1:50-200
Purification :	The antibody was affinity-purified from rabbit antiserum by affinity-chromatography using epitope-specific immunogen.
Concentration :	1 mg/ml
Storage Stability :	-15°C to -25°C/1 year(Do not lower than -25°C)
Observed Band :	130-170kD
Cell Pathway :	Cytokine-cytokine receptor interaction;Endocytosis;Hematopoietic cell lineage;Pathways in cancer;
Background :	The protein encoded by this gene is the receptor for colony stimulating factor 1, a cytokine which controls the production, differentiation, and function of macrophages. This receptor mediates most if not all of the biological effects of this cytokine. Ligand binding activates the receptor kinase through a process of oligomerization and transphosphorylation. The encoded protein is a tyrosine kinase transmembrane receptor and member of the CSF1/PDGF receptor family of tyrosine-protein kinases. Mutations in this gene have been associated with a predisposition to myeloid malignancy. The first intron of this gene contains a transcriptionally inactive ribosomal protein L7 processed pseudogene oriented in the opposite direction. Alternative splicing results in multiple transcript variants. [provided by RefSeq, Dec 2013],
Function :	catalytic activity:ATP + a [protein]-L-tyrosine = ADP + a [protein]-L-tyrosine phosphate.,function:Protein tyrosine-kinase transmembrane receptor for CSF1 and IL34.,similarity:Belongs to the protein kinase superfamily. Tyr protein kinase family.,similarity:Belongs to the protein kinase superfamily. Tyr protein kinase family. CSF-1/PDGF receptor subfamily.,similarity:Contains 1 protein kinase domain.,similarity:Contains 5 Ig-like C2-type (immunoglobulin-like) domains.,subunit:Interacts with INPPL1/SHIP2 and THOC5.,tissue specificity:Expressed in bone marrow and in differentiated blood mononuclear cells.,
Subcellular Location :	Cell membrane; Single-pass type I membrane protein.
Expression :	Expressed in bone marrow and in differentiated blood mononuclear cells.
Tag :	orthogonal
Sort :	3889
No2 :	3155S

No4 :	1
Host :	Rabbit
Modifications :	Phospho

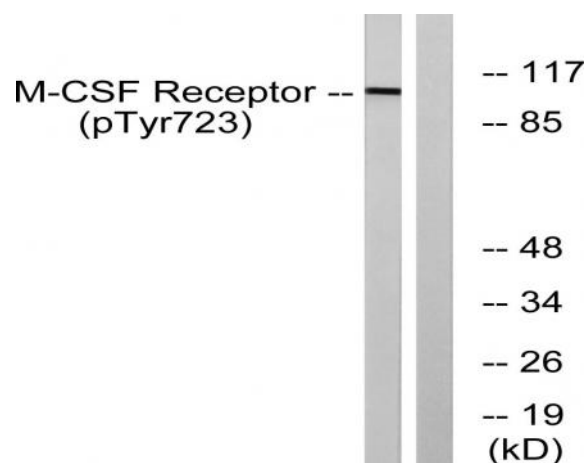
Products Images



Enzyme-Linked Immunosorbent Assay (Phospho-ELISA) for Immunogen Phosphopeptide (Phospho-left) and Non-Phosphopeptide (Phospho-right), using M-CSF Receptor (Phospho-Tyr723) Antibody



Immunohistochemistry analysis of paraffin-embedded human brain, using M-CSF Receptor (Phospho-Tyr723) Antibody. The picture on the right is blocked with the phospho peptide.



Western blot analysis of lysates from HUVEC cells treated with PMA 125ng/ml 30', using M-CSF Receptor (Phospho-Tyr723) Antibody. The lane on the right is blocked with the phospho peptide.