

TF (phospho Ser290) Polyclonal Antibody

Catalog No :	YP0733
Reactivity :	Human;Rat;Mouse;
Applications :	WB;IHC;IF;ELISA
Target :	TF
Fields :	>>Complement and coagulation cascades;>>AGE-RAGE signaling pathway in diabetic complications
Gene Name :	F3
Protein Name :	Tissue factor
Human Gene Id :	2152
Human Swiss Prot No :	P13726
Mouse Swiss Prot No :	P20352
Immunogen :	The antiserum was produced against synthesized peptide derived from human Coagulation Factor III around the phosphorylation site of Ser290. AA range:246-295
Specificity :	Phospho-TF (S290) Polyclonal Antibody detects endogenous levels of TF protein only when phosphorylated at S290.
Formulation :	Liquid in PBS containing 50% glycerol, 0.5% BSA and 0.02% sodium azide.
Source :	Polyclonal, Rabbit,IgG
Dilution :	WB 1:500 - 1:2000. IHC 1:100 - 1:300. ELISA: 1:20000.. IF 1:50-200
Purification :	The antibody was affinity-purified from rabbit antiserum by affinity-chromatography using epitope-specific immunogen.
Concentration :	1 mg/ml

Storage Stability : -15°C to -25°C/1 year(Do not lower than -25°C)

Observed Band : 40kD

Cell Pathway : Complement and coagulation cascades;

Background : This gene encodes coagulation factor III which is a cell surface glycoprotein. This factor enables cells to initiate the blood coagulation cascades, and it functions as the high-affinity receptor for the coagulation factor VII. The resulting complex provides a catalytic event that is responsible for initiation of the coagulation protease cascades by specific limited proteolysis. Unlike the other cofactors of these protease cascades, which circulate as nonfunctional precursors, this factor is a potent initiator that is fully functional when expressed on cell surfaces. There are 3 distinct domains of this factor: extracellular, transmembrane, and cytoplasmic. This protein is the only one in the coagulation pathway for which a congenital deficiency has not been described. Alternate splicing results in multiple transcript variants.[provided by RefSeq, May 2010],

Function : function:Initiates blood coagulation by forming a complex with circulating factor VII or VIIa. The [TF:VIIa] complex activates factors IX or X by specific limited protolysis. TF plays a role in normal hemostasis by initiating the cell-surface assembly and propagation of the coagulation protease cascade.,induction:TF expression is highly dependent upon cell type. TF can also be induced by the inflammatory mediators interleukin 1 and TNF, as well as by endotoxin, to appear on monocytes and vascular endothelial cells as a component of cellular immune response.,online information:The Singapore human mutation and polymorphism database,online information:Tissue factor entry,similarity:Belongs to the tissue factor family.,

Subcellular Location : [Isoform 1]: Membrane ; Single-pass type I membrane protein .; [Isoform 2]: Secreted .

Expression : Lung, placenta and pancreas.

Tag : orthogonal

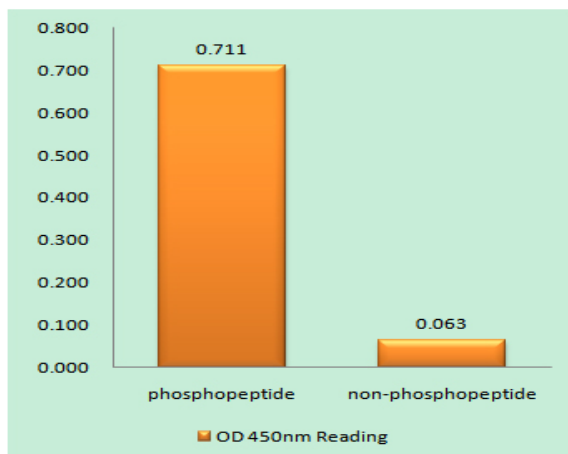
Sort : 17052

No4 : 1

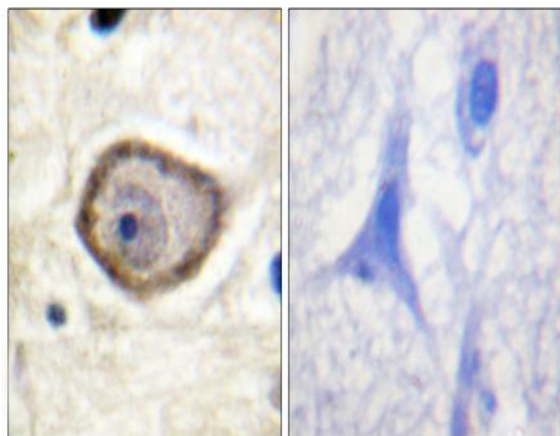
Host : Rabbit

Modifications : Phospho

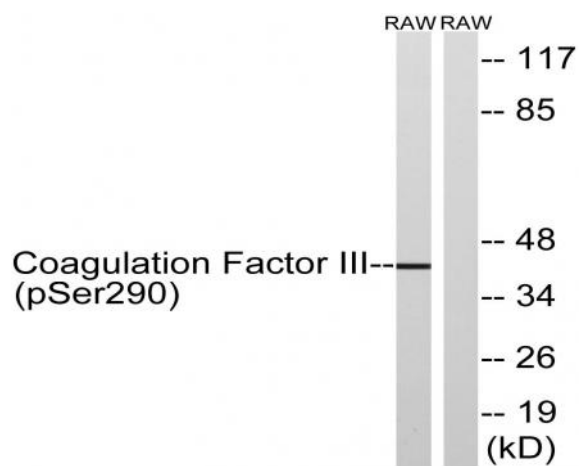
Products Images



Enzyme-Linked Immunosorbent Assay (Phospho-ELISA) for Immunogen Phosphopeptide (Phospho-left) and Non-Phosphopeptide (Phospho-right), using Coagulation Factor III (Phospho-Ser290) Antibody



Immunohistochemistry analysis of paraffin-embedded human brain, using Coagulation Factor III (Phospho-Ser290) Antibody. The picture on the right is blocked with the phospho peptide.



Western blot analysis of lysates from RAW264.7 cells treated with TNF 20ng/ml 30', using Coagulation Factor III (Phospho-Ser290) Antibody. The lane on the right is blocked with the phospho peptide.