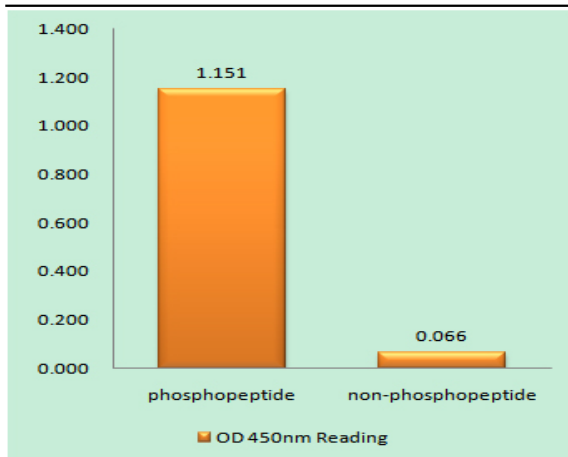


Rad52 (phospho Tyr104) Polyclonal Antibody

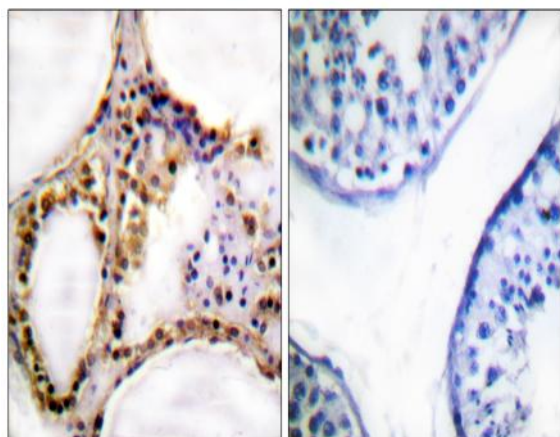
Catalog No :	YP0758
Reactivity :	Human;Mouse;Monkey
Applications :	WB;IHC;IF;ELISA
Target :	Rad52
Fields :	>>Homologous recombination
Gene Name :	RAD52
Protein Name :	DNA repair protein RAD52 homolog
Human Gene Id :	5893
Human Swiss Prot No :	P43351
Mouse Gene Id :	19365
Mouse Swiss Prot No :	P43352
Immunogen :	The antiserum was produced against synthesized peptide derived from human RAD52 around the phosphorylation site of Tyr104. AA range:70-119
Specificity :	Phospho-Rad52 (Y104) Polyclonal Antibody detects endogenous levels of Rad52 protein only when phosphorylated at Y104.
Formulation :	Liquid in PBS containing 50% glycerol, 0.5% BSA and 0.02% sodium azide.
Source :	Polyclonal, Rabbit,IgG
Dilution :	WB 1:500 - 1:2000. IHC 1:100 - 1:300. ELISA: 1:20000.. IF 1:50-200
Purification :	The antibody was affinity-purified from rabbit antiserum by affinity-chromatography using epitope-specific immunogen.
Concentration :	1 mg/ml

Storage Stability :	<u>-15°C to -25°C/1 year(Do not lower than -25°C)</u>
Observed Band :	<u>46kD</u>
Cell Pathway :	<u>Homologous recombination;</u>
Background :	<u>The protein encoded by this gene shares similarity with Saccharomyces cerevisiae Rad52, a protein important for DNA double-strand break repair and homologous recombination. This gene product was shown to bind single-stranded DNA ends, and mediate the DNA-DNA interaction necessary for the annealing of complementary DNA strands. It was also found to interact with DNA recombination protein RAD51, which suggested its role in RAD51 related DNA recombination and repair. A pseudogene of this gene is present on chromosome 2. Alternative splicing results in multiple transcript variants. Additional alternatively spliced transcript variants of this gene have been described, but their full-length nature is not known. [provided by RefSeq, Jul 2014],</u>
Function :	<u>function:Involved in double-stranded break repair. Plays a central role in genetic recombination and DNA repair by promoting the annealing of complementary single-stranded DNA and by stimulation of the RAD51 recombinase.,PTM:Phosphorylated upon DNA damage, probably by ATM or ATR.,similarity:Belongs to the RAD52 family.,subunit:Forms a undecameric ring.,</u>
Subcellular Location :	<u>Nucleus .</u>
Expression :	<u>Amygdala,Brain,Embryonal rhabdomyosarcoma,Hippocampus,PCR rescued c</u>
Tag :	<u>orthogonal</u>
Sort :	<u>13759</u>
No4 :	<u>1</u>
Host :	<u>Rabbit</u>
Modifications :	<u>Phospho</u>

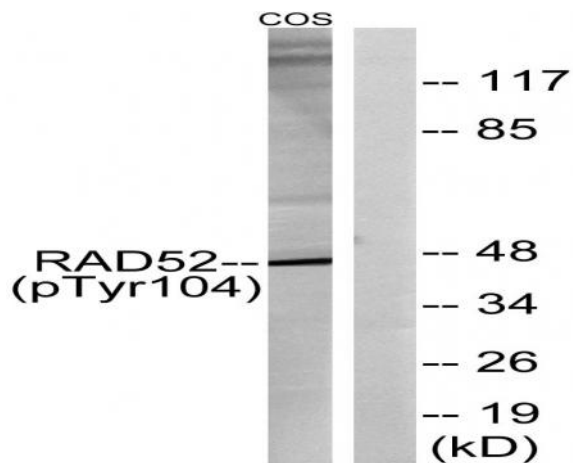
Products Images



Enzyme-Linked Immunosorbent Assay (Phospho-ELISA) for Immunogen Phosphopeptide (Phospho-left) and Non-Phosphopeptide (Phospho-right), using RAD52 (Phospho-Tyr104) Antibody



Immunohistochemistry analysis of paraffin-embedded human testis, using RAD52 (Phospho-Tyr104) Antibody. The picture on the right is blocked with the phospho peptide.



Western blot analysis of lysates from COS7 cells treated with H₂O₂ 100uM 30', using RAD52 (Phospho-Tyr104) Antibody. The lane on the right is blocked with the phospho peptide.