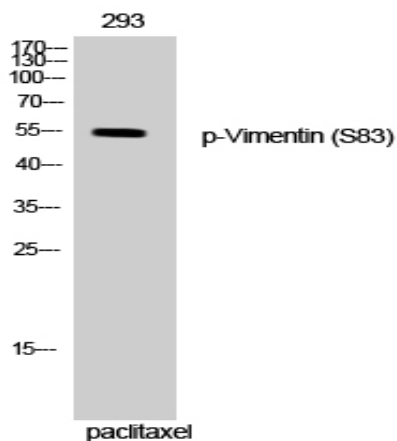


## Vimentin (phospho Ser83) Polyclonal Antibody

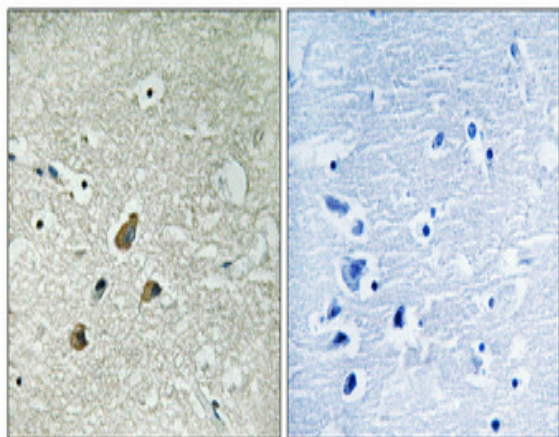
<b>Catalog No :</b>	YP0766
<b>Reactivity :</b>	Human;Mouse;Rat
<b>Applications :</b>	WB;IHC;IF;ELISA
<b>Target :</b>	Vimentin
<b>Fields :</b>	>>Epstein-Barr virus infection;>>MicroRNAs in cancer
<b>Gene Name :</b>	VIM
<b>Protein Name :</b>	Vimentin
<b>Human Gene Id :</b>	7431
<b>Human Swiss Prot No :</b>	P08670
<b>Mouse Gene Id :</b>	22352
<b>Mouse Swiss Prot No :</b>	P20152
<b>Rat Gene Id :</b>	81818
<b>Rat Swiss Prot No :</b>	P31000
<b>Immunogen :</b>	The antiserum was produced against synthesized peptide derived from human Vimentin around the phosphorylation site of Ser83. AA range:56-105
<b>Specificity :</b>	Phospho-Vimentin (S83) Polyclonal Antibody detects endogenous levels of Vimentin protein only when phosphorylated at S83.
<b>Formulation :</b>	Liquid in PBS containing 50% glycerol, 0.5% BSA and 0.02% sodium azide.
<b>Source :</b>	Polyclonal, Rabbit,IgG
<b>Dilution :</b>	WB 1:500 - 1:2000. IHC 1:100 - 1:300. ELISA: 1:10000.. IF 1:50-200

<b>Purification :</b>	The antibody was affinity-purified from rabbit antiserum by affinity-chromatography using epitope-specific immunogen.
<b>Concentration :</b>	1 mg/ml
<b>Storage Stability :</b>	-15°C to -25°C/1 year(Do not lower than -25°C)
<b>Observed Band :</b>	54kD
<b>Background :</b>	This gene encodes a member of the intermediate filament family. Intermediate filaments, along with microtubules and actin microfilaments, make up the cytoskeleton. The protein encoded by this gene is responsible for maintaining cell shape, integrity of the cytoplasm, and stabilizing cytoskeletal interactions. It is also involved in the immune response, and controls the transport of low-density lipoprotein (LDL)-derived cholesterol from a lysosome to the site of esterification. It functions as an organizer of a number of critical proteins involved in attachment, migration, and cell signaling. Mutations in this gene causes a dominant, pulverulent cataract.[provided by RefSeq, Jun 2009],
<b>Function :</b>	function:Vimentins are class-III intermediate filaments found in various non-epithelial cells, especially mesenchymal cells.,online information:Vimentin entry,PTM:One of the most prominent phosphoproteins in various cells of mesenchymal origin. Phosphorylation is enhanced during cell division, at which time vimentin filaments are significantly reorganized.,sequence caution:Intron retention.,similarity:Belongs to the intermediate filament family.,subunit:Homopolymer. Interacts with HCV core protein. Interacts with LGSN and SYNM.,tissue specificity:Highly expressed in fibroblasts, some expression in T- and B-lymphocytes, and little or no expression in Burkitt's lymphoma cell lines. Expressed in many hormone-independent mammary carcinoma cell lines.,
<b>Subcellular Location :</b>	Cytoplasm . Cytoplasm, cytoskeleton . Nucleus matrix . Cell membrane .
<b>Expression :</b>	Highly expressed in fibroblasts, some expression in T- and B-lymphocytes, and little or no expression in Burkitt's lymphoma cell lines. Expressed in many hormone-independent mammary carcinoma cell lines.
<b>Tag :</b>	orthogonal
<b>Sort :</b>	24155
<b>No2 :</b>	12569S
<b>No4 :</b>	1
<b>Host :</b>	Rabbit

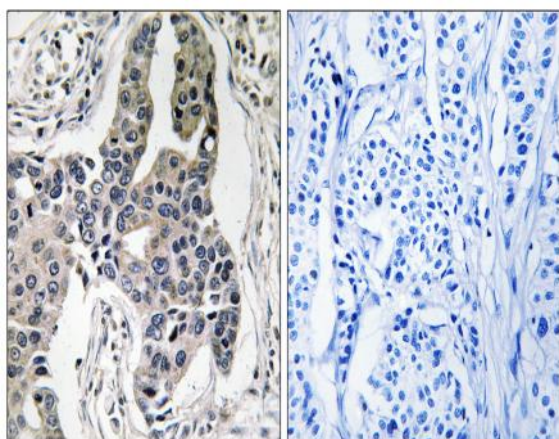
## Products Images



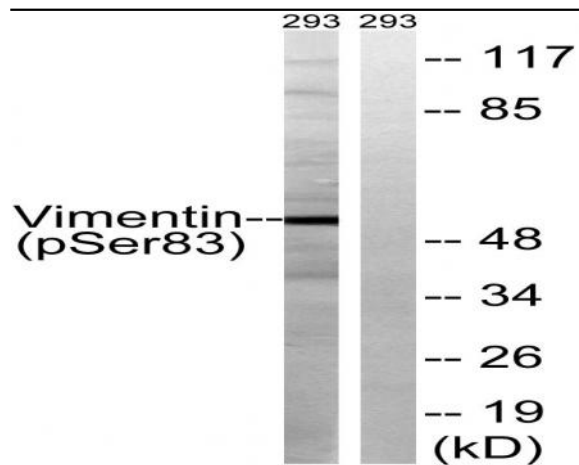
Western Blot analysis of 293 cells using Phospho-Vimentin (S83) Polyclonal Antibody



Immunohistochemical analysis of paraffin-embedded Human brain. Antibody was diluted at 1:100(4° overnight). High-pressure and temperature Tris-EDTA,pH8.0 was used for antigen retrieval. Negative control (right) obtained from antibody was pre-absorbed by immunogen peptide.



Immunohistochemistry analysis of paraffin-embedded human breast carcinoma, using Vimentin (Phospho-Ser83) Antibody. The picture on the right is blocked with the phospho peptide.



Western blot analysis of lysates from 293 cells treated with paclitaxel 1 uM 24h, using Vimentin (Phospho-Ser83) Antibody. The lane on the right is blocked with the phospho peptide.