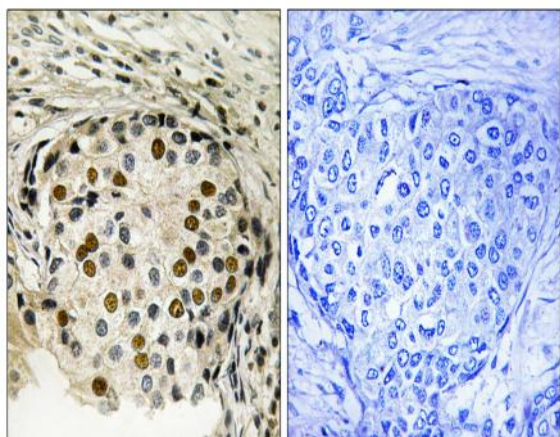


OSR1 (phospho Thr185) Polyclonal Antibody

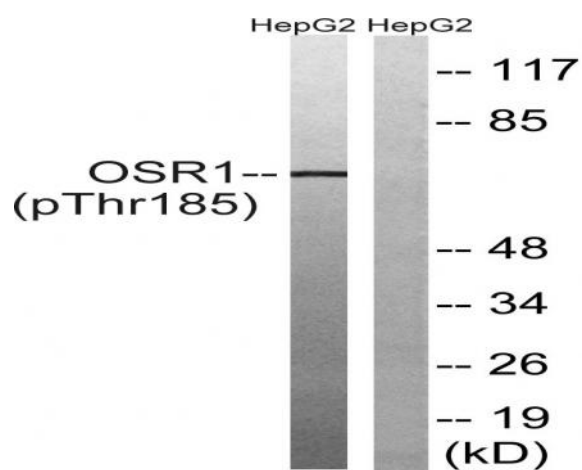
Catalog No :	YP0793
Reactivity :	Human;Mouse
Applications :	WB;IHC;IF;ELISA
Target :	OSR1
Gene Name :	OXSR1
Protein Name :	Serine/threonine-protein kinase OSR1
Human Gene Id :	9943
Human Swiss Prot No :	O95747
Mouse Gene Id :	108737
Mouse Swiss Prot No :	Q6P9R2
Immunogen :	The antiserum was produced against synthesized peptide derived from human OSR1 around the phosphorylation site of Thr185. AA range:151-200
Specificity :	Phospho-OSR1 (T185) Polyclonal Antibody detects endogenous levels of OSR1 protein only when phosphorylated at T185.
Formulation :	Liquid in PBS containing 50% glycerol, 0.5% BSA and 0.02% sodium azide.
Source :	Polyclonal, Rabbit,IgG
Dilution :	WB 1:500 - 1:2000. IHC 1:100 - 1:300. ELISA: 1:10000.. IF 1:50-200
Purification :	The antibody was affinity-purified from rabbit antiserum by affinity-chromatography using epitope-specific immunogen.
Concentration :	1 mg/ml
Storage Stability :	-15°C to -25°C/1 year(Do not lower than -25°C)

Observed Band :	65kD
Background :	The product of this gene belongs to the Ser/Thr protein kinase family of proteins. It regulates downstream kinases in response to environmental stress, and may play a role in regulating the actin cytoskeleton. [provided by RefSeq, Jul 2008],
Function :	catalytic activity:ATP + a protein = ADP + a phosphoprotein.,cofactor:Magnesium.,enzyme regulation:By autophosphorylation on threonine.,function:Regulates downstream kinases in response to environmental stress. May also have a function in regulating the actin cytoskeleton.,PTM:Phosphorylated upon DNA damage, probably by ATM or ATR.,similarity:Belongs to the protein kinase superfamily. STE Ser/Thr protein kinase family. STE20 subfamily.,similarity:Contains 1 protein kinase domain.,subunit:Binds to and phosphorylates PAK1. Interacts with chloride channel proteins SLC12A6 isoform 2, SLC12A1 and SLC12A2 but not with SLC12A4 and SLC12A7, possibly establishing sensor/signaling modules that initiate the cellular response to environmental stress. Binds to and phosphorylates RELL1, RELL2 AND RELT.,tissue specificity:Ubiquitously expressed in all tissue examined.,
Subcellular Location :	Cytoplasm .
Expression :	Ubiquitously expressed in all tissue examined.
Tag :	orthogonal
Sort :	11322
No4 :	1
Host :	Rabbit
Modifications :	Phospho

Products Images



Immunohistochemistry analysis of paraffin-embedded human breast carcinoma, using OSR1 (Phospho-Thr185) Antibody. The picture on the right is blocked with the phospho peptide.



Western blot analysis of lysates from HepG2 cells treated with serum 20% 15', using OSR1 (Phospho-Thr185) Antibody. The lane on the right is blocked with the phospho peptide.