

**ATRIP (phospho Ser224) Polyclonal Antibody**

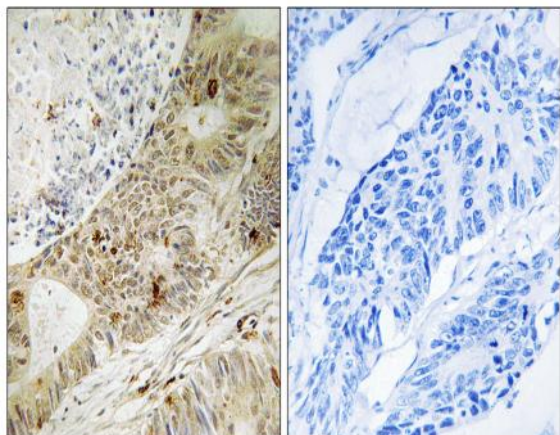
<b>Catalog No :</b>	YP0813
<b>Reactivity :</b>	Human;Rat;Mouse;
<b>Applications :</b>	WB;IHC;IF;ELISA
<b>Target :</b>	ATRIP
<b>Fields :</b>	>>Fanconi anemia pathway
<b>Gene Name :</b>	ATRIP
<b>Protein Name :</b>	ATR-interacting protein
<b>Human Gene Id :</b>	84126
<b>Human Swiss Prot No :</b>	Q8WXE1
<b>Mouse Swiss Prot No :</b>	Q8BMG1
<b>Immunogen :</b>	The antiserum was produced against synthesized peptide derived from human ATRIP around the phosphorylation site of Ser224. AA range:190-239
<b>Specificity :</b>	Phospho-ATRIP (S224) Polyclonal Antibody detects endogenous levels of ATRIP protein only when phosphorylated at S224.
<b>Formulation :</b>	Liquid in PBS containing 50% glycerol, 0.5% BSA and 0.02% sodium azide.
<b>Source :</b>	Polyclonal, Rabbit,IgG
<b>Dilution :</b>	WB 1:500 - 1:2000. IHC 1:100 - 1:300. ELISA: 1:10000.. IF 1:50-200
<b>Purification :</b>	The antibody was affinity-purified from rabbit antiserum by affinity-chromatography using epitope-specific immunogen.
<b>Concentration :</b>	1 mg/ml
<b>Storage Stability :</b>	-15°C to -25°C/1 year(Do not lower than -25°C)

---

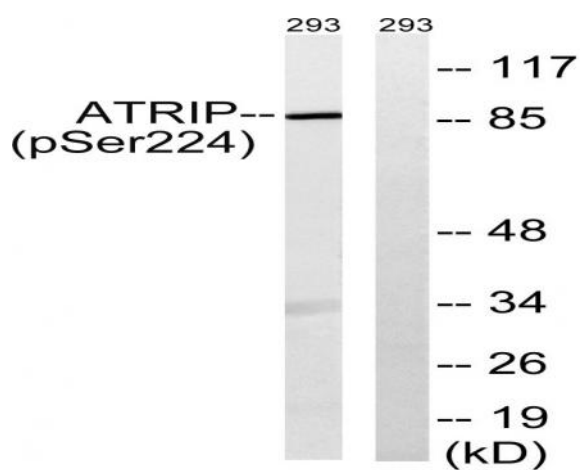
<b>Observed Band :</b>	86kD
<b>Background :</b>	This gene encodes an essential component of the DNA damage checkpoint. The encoded protein binds to single-stranded DNA coated with replication protein A. The protein also interacts with the ataxia telangiectasia and Rad3 related protein kinase, resulting in its accumulation at intranuclear foci induced by DNA damage. Multiple transcript variants encoding different isoforms have been found for this gene. [provided by RefSeq, Aug 2012],
<b>Function :</b>	caution:The gene for this protein is either identical to or adjacent to that of TREX1. Some of the mRNAs that encode ATRIP also encode TREX1 in another reading frame.,domain:The EEXXXDDL motif is required for the interaction with catalytic subunit PRKDC and its recruitment to sites of DNA damage.,function:Required for checkpoint signaling after DNA damage. Required for ATR expression, possibly by stabilizing the protein.,PTM:Phosphorylated by ATR.,sequence caution:Translation N-terminally extended.,similarity:Belongs to the ATRIP family.,subcellular location:Redistributes to discrete nuclear foci upon DNA damage.,subunit:Heterodimer with ATR. The heterodimer binds the RPA complex and is then recruited to single stranded DNA. Interacts with CEP164 (via N-terminus).,tissue specificity:Ubiquitous.,
<b>Subcellular Location :</b>	Nucleus . Redistributes to discrete nuclear foci upon DNA damage.
<b>Expression :</b>	Ubiquitous.
<b>Tag :</b>	orthogonal
<b>Sort :</b>	2447
<b>No2 :</b>	5161S
<b>No4 :</b>	1
<b>Host :</b>	Rabbit
<b>Modifications :</b>	Phospho

---

## Products Images



Immunohistochemistry analysis of paraffin-embedded human colon carcinoma, using ATRIP (Phospho-Ser224) Antibody. The picture on the right is blocked with the phospho peptide.



Western blot analysis of lysates from 293 cells treated with UV 15', using ATRIP (Phospho-Ser224) Antibody. The lane on the right is blocked with the phospho peptide.