

**Rrn3 (phospho Ser649) Polyclonal Antibody**

<b>Catalog No :</b>	YP0834
<b>Reactivity :</b>	Human;Rat;Mouse;
<b>Applications :</b>	WB;IHC;IF;ELISA
<b>Target :</b>	TIF-IA
<b>Gene Name :</b>	RRN3
<b>Protein Name :</b>	RNA polymerase I-specific transcription initiation factor RRN3
<b>Human Gene Id :</b>	54700
<b>Human Swiss Prot No :</b>	Q9NYV6
<b>Mouse Swiss Prot No :</b>	B2RS91
<b>Immunogen :</b>	The antiserum was produced against synthesized peptide derived from human TIF-IA around the phosphorylation site of Ser649. AA range:602-651
<b>Specificity :</b>	Phospho-Rrn3 (S649) Polyclonal Antibody detects endogenous levels of Rrn3 protein only when phosphorylated at S649.
<b>Formulation :</b>	Liquid in PBS containing 50% glycerol, 0.5% BSA and 0.02% sodium azide.
<b>Source :</b>	Polyclonal, Rabbit,IgG
<b>Dilution :</b>	WB 1:500 - 1:2000. IHC 1:100 - 1:300. ELISA: 1:10000.. IF 1:50-200
<b>Purification :</b>	The antibody was affinity-purified from rabbit antiserum by affinity-chromatography using epitope-specific immunogen.
<b>Concentration :</b>	1 mg/ml
<b>Storage Stability :</b>	-15°C to -25°C/1 year(Do not lower than -25°C)
<b>Observed Band :</b>	70kD

**Background :** function:Required for efficient transcription initiation by RNA polymerase I.,similarity:Belongs to the RRN3 family.,

**Function :** function:Required for efficient transcription initiation by RNA polymerase I.,similarity:Belongs to the RRN3 family.,

**Subcellular Location :** Nucleus, nucleolus .

**Expression :** Hippocampus,Kidney,Pooled,Spleen,

**Tag :** orthogonal,hot

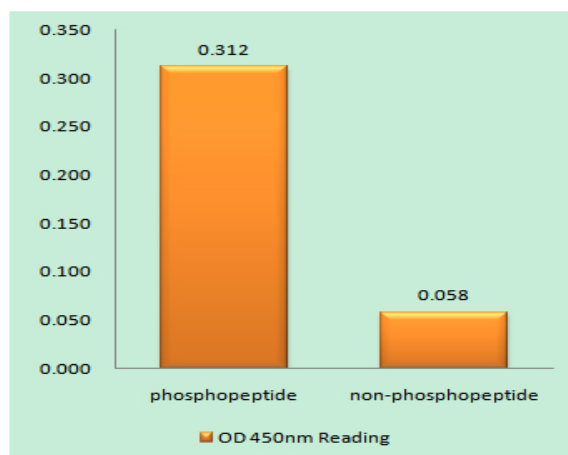
**Sort :** 14611

**No4 :** 1

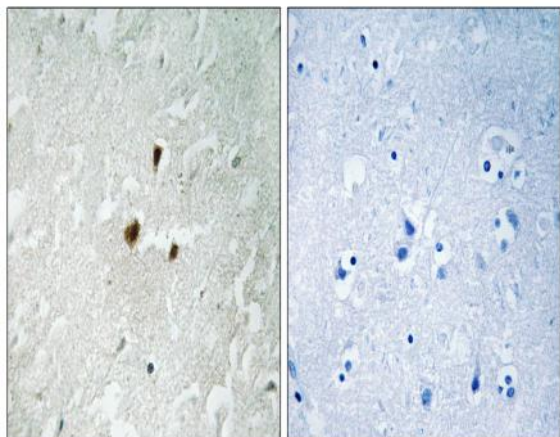
**Host :** Rabbit

**Modifications :** Phospho

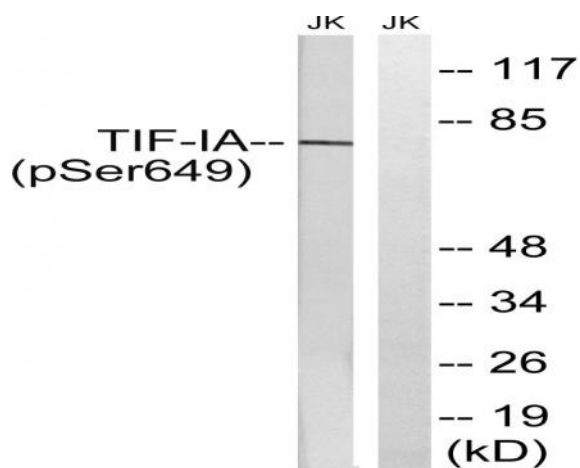
## Products Images



Enzyme-Linked Immunosorbent Assay (Phospho-ELISA) for Immunogen Phosphopeptide (Phospho-left) and Non-Phosphopeptide (Phospho-right), using TIF-IA (Phospho-Ser649) Antibody



Immunohistochemistry analysis of paraffin-embedded human brain, using TIF-IA (Phospho-Ser649) Antibody. The picture on the right is blocked with the phospho peptide.



Western blot analysis of lysates from Jurkat cells treated with starved 24h, using TIF-IA (Phospho-Ser649) Antibody. The lane on the right is blocked with the phospho peptide.