

TOB1 (phospho Ser164) Polyclonal Antibody

Catalog No :	YP0835
Reactivity :	Human;Mouse;Rat
Applications :	WB;IHC;IF;ELISA
Target :	TOB1
Fields :	>>RNA degradation
Gene Name :	TOB1
Protein Name :	Protein Tob1
Human Gene Id :	10140
Human Swiss Prot No :	P50616
Mouse Swiss Prot No :	Q61471
Rat Swiss Prot No :	Q8R5K6
Immunogen :	The antiserum was produced against synthesized peptide derived from human TOB1 around the phosphorylation site of Ser164. AA range:130-179
Specificity :	Phospho-TOB1 (S164) Polyclonal Antibody detects endogenous levels of TOB1 protein only when phosphorylated at S164.
Formulation :	Liquid in PBS containing 50% glycerol, 0.5% BSA and 0.02% sodium azide.
Source :	Polyclonal, Rabbit,IgG
Dilution :	WB 1:500 - 1:2000. IHC 1:100 - 1:300. ELISA: 1:5000.. IF 1:50-200
Purification :	The antibody was affinity-purified from rabbit antiserum by affinity-chromatography using epitope-specific immunogen.
Concentration :	1 mg/ml

Storage Stability : -15°C to -25°C/1 year(Do not lower than -25°C)

Observed Band : 40kD

Background : This gene encodes a member of the transducer of erbB-2 /B-cell translocation gene protein family. Members of this family are anti-proliferative factors that have the potential to regulate cell growth. The encoded protein may function as a tumor suppressor. Alternate splicing results in multiple transcript variants. [provided by RefSeq, Aug 2011],

Function : function:Anti-proliferative protein that interacts with the erbB-2 receptor tyrosine kinase. May physically and/or functionally interact with protein-tyrosine kinase receptors.,PTM:Phosphorylated on Ser and Thr residues.,similarity:Belongs to the BTG family.,subunit:Interacts with CNOT7.,tissue specificity:Ubiquitous.,

Subcellular Location : Cytoplasm . Nucleus . Only a small fraction localizes to the cytoplasm except in late S-phase where more than half of proteins become cytoplasmic. .

Expression : Ubiquitous.

Tag : orthogonal

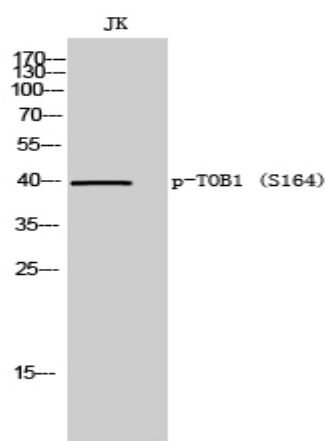
Sort : 17269

No4 : 1

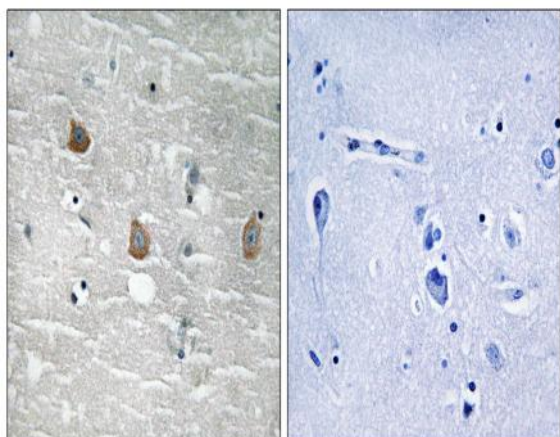
Host : Rabbit

Modifications : Phospho

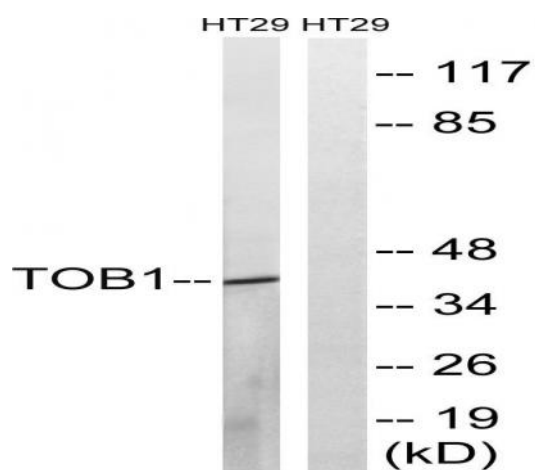
Products Images



Western Blot analysis of JK cells using Phospho-TOB1 (S164) Polyclonal Antibody



Immunohistochemistry analysis of paraffin-embedded human brain, using TOB1 (Phospho-Ser164) Antibody. The picture on the right is blocked with the phospho peptide.



Western blot analysis of lysates from HT29 cells treated with serum 20% 15', using TOB1 (Phospho-Ser164) Antibody. The lane on the right is blocked with the phospho peptide.