

**GluR-1 (phospho Ser863) Polyclonal Antibody**

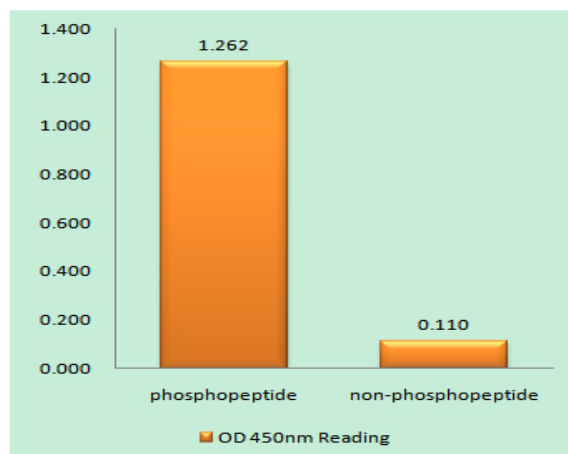
<b>Catalog No :</b>	YP0848
<b>Reactivity :</b>	Human;Mouse;Rat
<b>Applications :</b>	WB;IHC;IF;ELISA
<b>Target :</b>	GluR-1
<b>Fields :</b>	>>cAMP signaling pathway;>>Neuroactive ligand-receptor interaction;>>Circadian entrainment;>>Long-term potentiation;>>Retrograde endocannabinoid signaling;>>Glutamatergic synapse;>>Dopaminergic synapse;>>Long-term depression;>>Amyotrophic lateral sclerosis;>>Huntington disease;>>Spinocerebellar ataxia;>>Pathways of neurodegeneration - multiple diseases;>>Amphetamine addiction;>>Nicotine addiction
<b>Gene Name :</b>	GRIA1
<b>Protein Name :</b>	Glutamate receptor 1
<b>Human Gene Id :</b>	2890
<b>Human Swiss Prot No :</b>	P42261
<b>Mouse Gene Id :</b>	14799
<b>Mouse Swiss Prot No :</b>	P23818
<b>Rat Gene Id :</b>	50592
<b>Rat Swiss Prot No :</b>	P19490
<b>Immunogen :</b>	The antiserum was produced against synthesized peptide derived from human GluR1 around the phosphorylation site of Ser863. AA range:829-878
<b>Specificity :</b>	Phospho-GluR-1 (S863) Polyclonal Antibody detects endogenous levels of GluR-1 protein only when phosphorylated at S863.
<b>Formulation :</b>	Liquid in PBS containing 50% glycerol, 0.5% BSA and 0.02% sodium azide.

<b>Source :</b>	Polyclonal, Rabbit,IgG
<b>Dilution :</b>	WB 1:500 - 1:2000. IHC 1:100 - 1:300. ELISA: 1:40000.. IF 1:50-200
<b>Purification :</b>	The antibody was affinity-purified from rabbit antiserum by affinity-chromatography using epitope-specific immunogen.
<b>Concentration :</b>	1 mg/ml
<b>Storage Stability :</b>	-15°C to -25°C/1 year(Do not lower than -25°C)
<b>Observed Band :</b>	102kD
<b>Cell Pathway :</b>	Neuroactive ligand-receptor interaction;Long-term potentiation;Long-term depression;Amyotrophic lateral sclerosis (ALS);
<b>Background :</b>	Glutamate receptors are the predominant excitatory neurotransmitter receptors in the mammalian brain and are activated in a variety of normal neurophysiologic processes. These receptors are heteromeric protein complexes with multiple subunits, each possessing transmembrane regions, and all arranged to form a ligand-gated ion channel. The classification of glutamate receptors is based on their activation by different pharmacologic agonists. This gene belongs to a family of alpha-amino-3-hydroxy-5-methyl-4-isoxazole propionate (AMPA) receptors. Alternatively spliced transcript variants encoding different isoforms have been found for this gene. [provided by RefSeq, Jul 2008],
<b>Function :</b>	function:Ionotropic glutamate receptor. L-glutamate acts as an excitatory neurotransmitter at many synapses in the central nervous system. Binding of the excitatory neurotransmitter L-glutamate induces a conformation change, leading to the opening of the cation channel, and thereby converts the chemical signal to an electrical impulse. The receptor then desensitizes rapidly and enters a transient inactive state, characterized by the presence of bound agonist.,miscellaneous:The postsynaptic actions of Glu are mediated by a variety of receptors that are named according to their selective agonists. This receptor binds AMPA (quisqualate) > glutamate > kainate.,PTM:Palmitoylated. Depalmitoylated upon glutamate stimulation. Cys-603 palmitoylation leads to Golgi retention and decreased cell surface expression. In contrast, Cys-829 palmitoylation does not affect cell surface expression but regul
<b>Subcellular Location :</b>	Cell membrane ; Multi-pass membrane protein . Endoplasmic reticulum membrane ; Multi-pass membrane protein . Cell junction, synapse, postsynaptic cell membrane ; Multi-pass membrane protein . Cell junction, synapse, postsynaptic density membrane ; Multi-pass membrane protein . Cell projection, dendrite . Cell projection, dendritic spine . Early endosome membrane ; Multi-pass membrane protein . Recycling endosome membrane ; Multi-pass membrane protein . Cell junction, synapse, presynapse . Cell junction, synapse . Interaction with CACNG2, CNIH2 and CNIH3 promotes cell surface expression. Colocalizes

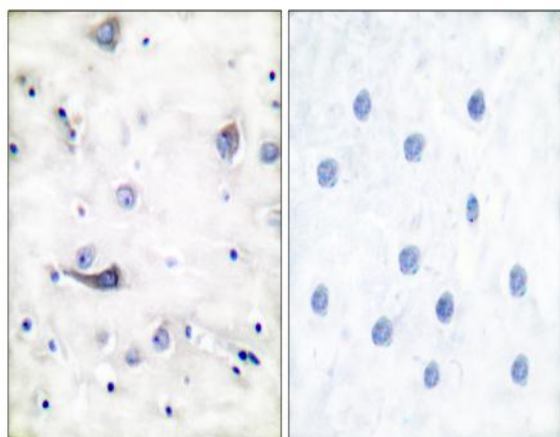
with PDLIM4 in early endosomes. Displays a somatodendritic localization and is excluded from axons in neurons (By similarity). Localized to cone photoreceptor pedicles (By similarity).

<b>Expression :</b>	Widely expressed in brain.
<b>Sort :</b>	6622
<b>No4 :</b>	1
<b>Host :</b>	Rabbit
<b>Modifications :</b>	Phospho

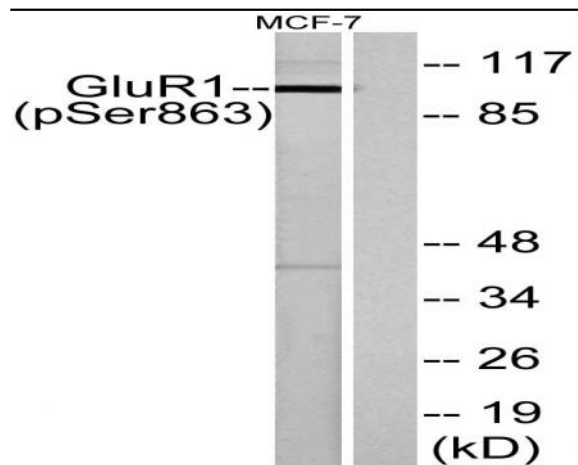
## Products Images



Enzyme-Linked Immunosorbent Assay (Phospho-ELISA) for Immunogen Phosphopeptide (Phospho-left) and Non-Phosphopeptide (Phospho-right), using GluR1 (Phospho-Ser863) Antibody



Immunohistochemistry analysis of paraffin-embedded human brain, using GluR1 (Phospho-Ser863) Antibody. The picture on the right is blocked with the phospho peptide.



Western blot analysis of lysates from MCF-7 cells, using GluR1 (Phospho-Ser863) Antibody. The lane on the right is blocked with the phospho peptide.