

**Crk-L (phospho Tyr207) Polyclonal Antibody**

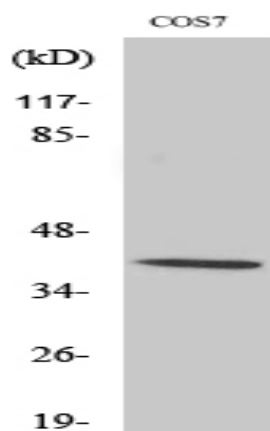
|                              |   |
|------------------------------|---|
| <b>Catalog No :</b>          | YP0869  |
| <b>Reactivity :</b>          | Human;Mouse;Rat;Monkey  |
| <b>Applications :</b>        | WB;IHC;IF;ELISA   |
| <b>Target :</b>              | Crk-L   |
| <b>Fields :</b>              | >>MAPK signaling pathway;>>ErbB signaling pathway;>>Rap1 signaling pathway;>>Chemokine signaling pathway;>>Focal adhesion;>>Fc gamma R-mediated phagocytosis;>>Neurotrophin signaling pathway;>>Regulation of actin cytoskeleton;>>Insulin signaling pathway;>>Growth hormone synthesis, secretion and action;>>Bacterial invasion of epithelial cells;>>Shigellosis;>>Yersinia infection;>>Human cytomegalovirus infection;>>Human immunodeficiency virus 1 infection;>>Pathways in cancer;>>MicroRNAs in cancer;>>Renal cell carcinoma;>>Chronic myeloid leukemia |
| <b>Gene Name :</b>           | CRKL  |
| <b>Protein Name :</b>        | Crk-like protein  |
| <b>Human Gene Id :</b>       | 1399  |
| <b>Human Swiss Prot No :</b> | P46109  |
| <b>Mouse Gene Id :</b>       | 12929   |
| <b>Mouse Swiss Prot No :</b> | P47941  |
| <b>Rat Gene Id :</b>         | 1.00911e+008  |
| <b>Rat Swiss Prot No :</b>   | Q5U2U2  |
| <b>Immunogen :</b>           | The antiserum was produced against synthesized peptide derived from human CrkL around the phosphorylation site of Tyr207. AA range:173-222  |
| <b>Specificity :</b>         | Phospho-Crk-L (Y207) Polyclonal Antibody detects endogenous levels of Crk-L protein only when phosphorylated at Y207.   |

---

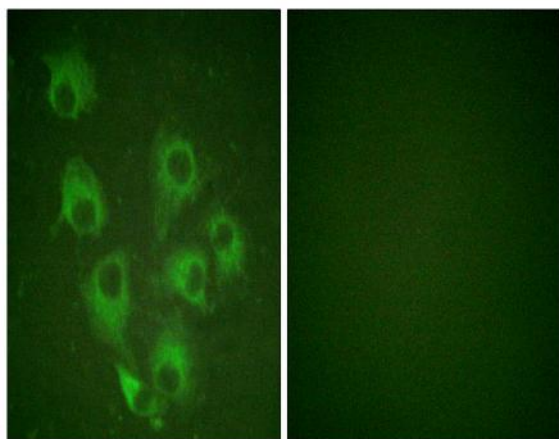
|                               |  |
|-------------------------------|--|
| <b>Formulation :</b>          | Liquid in PBS containing 50% glycerol, 0.5% BSA and 0.02% sodium azide.  |
| <b>Source :</b>               | Polyclonal, Rabbit,IgG   |
| <b>Dilution :</b>             | WB 1:500 - 1:2000. IHC 1:100 - 1:300. IF 1:200 - 1:1000. ELISA: 1:5000. Not yet tested in other applications.  |
| <b>Purification :</b>         | The antibody was affinity-purified from rabbit antiserum by affinity-chromatography using epitope-specific immunogen.  |
| <b>Concentration :</b>        | 1 mg/ml  |
| <b>Storage Stability :</b>    | -15°C to -25°C/1 year(Do not lower than -25°C)   |
| <b>Observed Band :</b>        | 39kD   |
| <b>Cell Pathway :</b>         | MAPK_ERK_Growth;MAPK_G_Protein;ErbB_HER;Chemokine;Focal adhesion;Fc gamma R-mediated phagocytosis;Neurotrophin;Regulates Actin and Cytoskeleton;Insulin_Receptor;Pathways in cancer;Renal cell carcinoma   |
| <b>Background :</b>           | This gene encodes a protein kinase containing SH2 and SH3 (src homology) domains which has been shown to activate the RAS and JUN kinase signaling pathways and transform fibroblasts in a RAS-dependent fashion. It is a substrate of the BCR-ABL tyrosine kinase, plays a role in fibroblast transformation by BCR-ABL, and may be oncogenic.[provided by RefSeq, Jan 2009], |
| <b>Function :</b>             | function:May mediate the transduction of intracellular signals.,similarity:Contains 1 SH2 domain.,similarity:Contains 2 SH3 domains.,subunit:Interacts with INPP5D/SHIP1. Interacts with DOCK2 and EPOR. Interacts with phosphorylated CBLB and IRS4.,   |
| <b>Subcellular Location :</b> | endosome,cytosol,cell-cell adherens junction,extracellular exosome,  |
| <b>Expression :</b>           | Skin,Spleen,   |
| <b>Sort :</b>                 | 4576   |
| <b>No2 :</b>                  | 3181L  |
| <b>No4 :</b>                  | 1  |
| <b>Host :</b>                 | Rabbit   |
| <b>Modifications :</b>        | Phospho  |

---

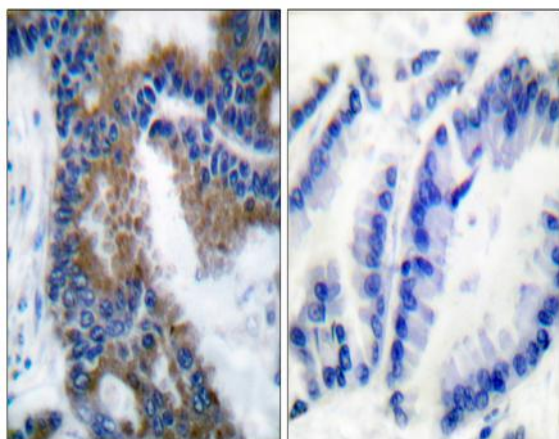
## Products Images



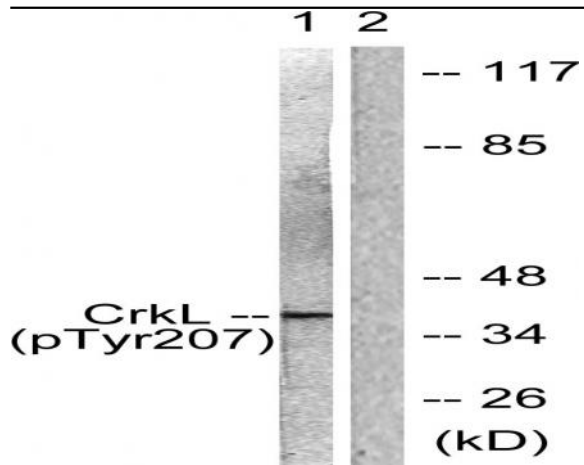
Western Blot analysis of various cells using Phospho-Crk-L (Y207) Polyclonal Antibody



Immunofluorescence analysis of HUVEC cells, using CrkL (Phospho-Tyr207) Antibody. The picture on the right is blocked with the phospho peptide.



Immunohistochemistry analysis of paraffin-embedded human lung carcinoma, using CrkL (Phospho-Tyr207) Antibody. The picture on the right is blocked with the phospho peptide.



Western blot analysis of lysates from COS7 cells, using CrkL (Phospho-Tyr207) Antibody. The lane on the right is blocked with the phospho peptide.