

ErbB-3 (phospho Tyr1222) Polyclonal Antibody

Catalog No :	YP0923
Reactivity :	Human;Mouse;Rat
Applications :	WB;IHC;IF;ELISA
Target :	ErbB-3/her2
Fields :	>>EGFR tyrosine kinase inhibitor resistance;>>MAPK signaling pathway;>>ErbB signaling pathway;>>Calcium signaling pathway;>>PI3K-Akt signaling pathway;>>Proteoglycans in cancer;>>MicroRNAs in cancer
Gene Name :	ERBB3
Protein Name :	Receptor tyrosine-protein kinase erbB-3
Human Gene Id :	2065
Human Swiss Prot No :	P21860
Mouse Gene Id :	13867
Mouse Swiss Prot No :	Q61526
Rat Gene Id :	29496
Rat Swiss Prot No :	Q62799
Immunogen :	The antiserum was produced against synthesized peptide derived from human HER3 around the phosphorylation site of Tyr1222. AA range:1191-1240
Specificity :	Phospho-ErbB-3 (Y1222) Polyclonal Antibody detects endogenous levels of ErbB-3 protein only when phosphorylated at Y1222.
Formulation :	Liquid in PBS containing 50% glycerol, 0.5% BSA and 0.02% sodium azide.
Source :	Polyclonal, Rabbit,IgG

Dilution : WB 1:500 - 1:2000. IHC 1:100 - 1:300. IF 1:200 - 1:1000. ELISA: 1:20000. Not yet tested in other applications.

Purification : The antibody was affinity-purified from rabbit antiserum by affinity-chromatography using epitope-specific immunogen.

Concentration : 1 mg/ml

Storage Stability : -15°C to -25°C/1 year(Do not lower than -25°C)

Observed Band : 148kD

Cell Pathway : ErbB_HER;Calcium;Endocytosis;

Background : This gene encodes a member of the epidermal growth factor receptor (EGFR) family of receptor tyrosine kinases. This membrane-bound protein has a neuregulin binding domain but not an active kinase domain. It therefore can bind this ligand but not convey the signal into the cell through protein phosphorylation. However, it does form heterodimers with other EGF receptor family members which do have kinase activity. Heterodimerization leads to the activation of pathways which lead to cell proliferation or differentiation. Amplification of this gene and/or overexpression of its protein have been reported in numerous cancers, including prostate, bladder, and breast tumors. Alternate transcriptional splice variants encoding different isoforms have been characterized. One isoform lacks the intermembrane region and is secreted outside the cell. This form acts to modulate the activity of the m

Function : catalytic activity:ATP + a [protein]-L-tyrosine = ADP + a [protein]-L-tyrosine phosphate.,disease:Defects in ERBB3 are the cause of lethal congenital contracture syndrome type 2 (LCCS2) [MIM:607598]; also called Israeli Bedouin multiple contracture syndrome type A. LCCS2 is an autosomal recessive neurogenic form of a neonatally lethal arthrogryposis that is associated with atrophy of the anterior horn of the spinal cord. The LCCS2 syndrome is characterized by multiple joint contractures, anterior horn atrophy in the spinal cord, and a unique feature of a markedly distended urinary bladder. The phenotype suggests a spinal cord neuropathic etiology.,disease:Overexpressed in a subset of human mammary tumors.,domain:The cytoplasmic part of the receptor may interact with the SH2 or SH3 domains of many signal-transducing proteins.,function:Binds and is activated by neuregulins and NTAK.,PTM:Li

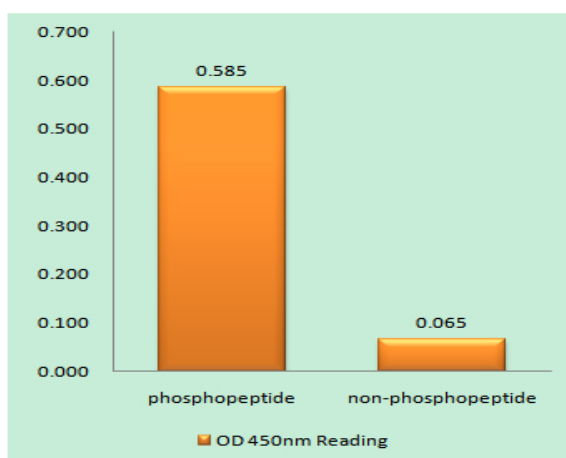
Subcellular Location : [Isoform 1]: Cell membrane ; Single-pass type I membrane protein.; [Isoform 2]: Secreted.

Expression : Epithelial tissues and brain.

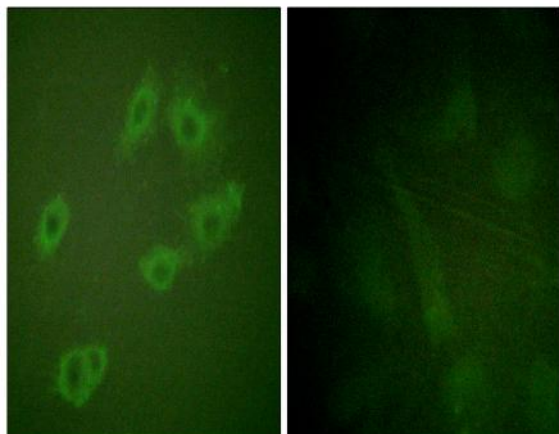
Tag : orthogonal

Sort :	5705
No2 :	4784S
No4 :	1
Host :	Rabbit
Modifications :	Phospho

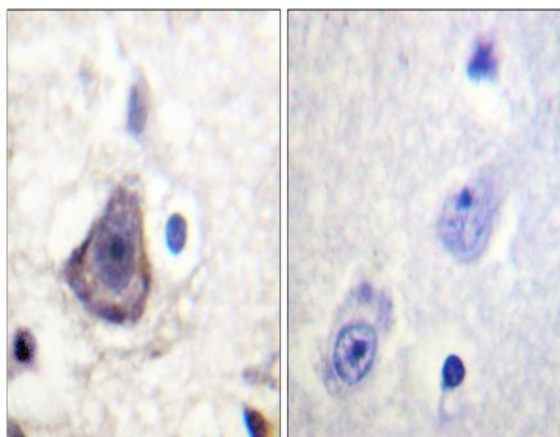
Products Images



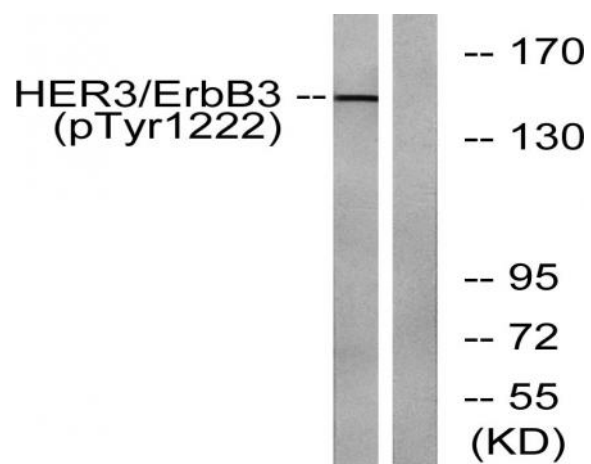
Enzyme-Linked Immunosorbent Assay (Phospho-ELISA) for Immunogen Phosphopeptide (Phospho-left) and Non-Phosphopeptide (Phospho-right), using HER3 (Phospho-Tyr1222) Antibody



Immunofluorescence analysis of HUVEC cells, using HER3 (Phospho-Tyr1222) Antibody. The picture on the right is blocked with the phospho peptide.



Immunohistochemistry analysis of paraffin-embedded human brain, using HER3 (Phospho-Tyr1222) Antibody. The picture on the right is blocked with the phospho peptide.



Western blot analysis of lysates from HUVEC cells treated with EGF 200ng/ml 30', using HER3 (Phospho-Tyr1222) Antibody. The lane on the right is blocked with the phospho peptide.