

CRMP-2 (phospho Thr514) Polyclonal Antibody

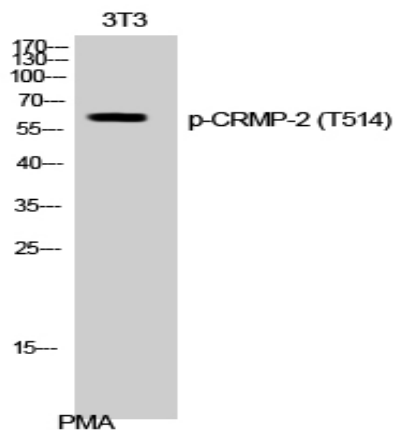
| | |
|------------------------------|---|
| Catalog No : | YP0947 |
| Reactivity : | Human;Mouse;Rat |
| Applications : | WB;IHC;IF;ELISA |
| Target : | CRMP-2 |
| Fields : | >>Axon guidance |
| Gene Name : | DPYSL2 |
| Protein Name : | Dihydropyrimidinase-related protein 2 |
| Human Gene Id : | 1808 |
| Human Swiss Prot No : | Q16555 |
| Mouse Gene Id : | 12934 |
| Mouse Swiss Prot No : | O08553 |
| Rat Gene Id : | 25416 |
| Rat Swiss Prot No : | P47942 |
| Immunogen : | The antiserum was produced against synthesized peptide derived from human DRP-2 around the phosphorylation site of Thr514. AA range:480-529 |
| Specificity : | Phospho-CRMP-2 (T514) Polyclonal Antibody detects endogenous levels of CRMP-2 protein only when phosphorylated at T514. |
| Formulation : | Liquid in PBS containing 50% glycerol, 0.5% BSA and 0.02% sodium azide. |
| Source : | Polyclonal, Rabbit,IgG |
| Dilution : | WB 1:500 - 1:2000. IHC 1:100 - 1:300. IF 1:200 - 1:1000. ELISA: 1:5000. Not yet tested in other applications. |

| | |
|-------------------------------|---|
| Purification : | The antibody was affinity-purified from rabbit antiserum by affinity-chromatography using epitope-specific immunogen. |
| Concentration : | 1 mg/ml |
| Storage Stability : | -15°C to -25°C/1 year(Do not lower than -25°C) |
| Observed Band : | 65kD |
| Cell Pathway : | Axon guidance; |
| Background : | This gene encodes a member of the collapsin response mediator protein family. Collapsin response mediator proteins form homo- and hetero-tetramers and facilitate neuron guidance, growth and polarity. The encoded protein promotes microtubule assembly and is required for Sema3A-mediated growth cone collapse, and also plays a role in synaptic signaling through interactions with calcium channels. This gene has been implicated in multiple neurological disorders, and hyperphosphorylation of the encoded protein may play a key role in the development of Alzheimer's disease. Alternatively spliced transcript variants encoding multiple isoforms have been observed for this gene. [provided by RefSeq, Sep 2011], |
| Function : | function:Necessary for signaling by class 3 semaphorins and subsequent remodeling of the cytoskeleton. Plays a role in axon guidance, neuronal growth cone collapse and cell migration.,PTM:3F4, a monoclonal antibody which strongly stains neurofibrillary tangles in Alzheimer disease brains, specifically labels DPYSL2 when phosphorylated on Ser-518, Ser-522 and Thr-509.,similarity:Belongs to the DHOase family. Hydantoinase/dihydropyrimidinase subfamily.,subunit:Homotetramer, and heterotetramer with CRMP1, DPYSL3, DPYSL4 or DPYSL5 (By similarity). Interacts through its C-terminus with the C-terminus of CYFIP1/SRA1. Interacts with HTR4.,tissue specificity:Ubiquitous., |
| Subcellular Location : | Cytoplasm, cytosol . Cytoplasm, cytoskeleton . Membrane . Tightly but non-covalently associated with membranes. |
| Expression : | Ubiquitous. |
| Tag : | orthogonal,hot |
| Sort : | 4583 |
| No2 : | 9397S |
| No4 : | 1 |

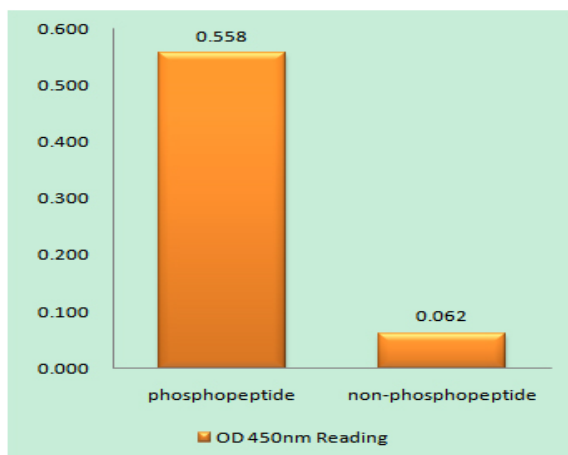
Host : Rabbit

Modifications : Phospho

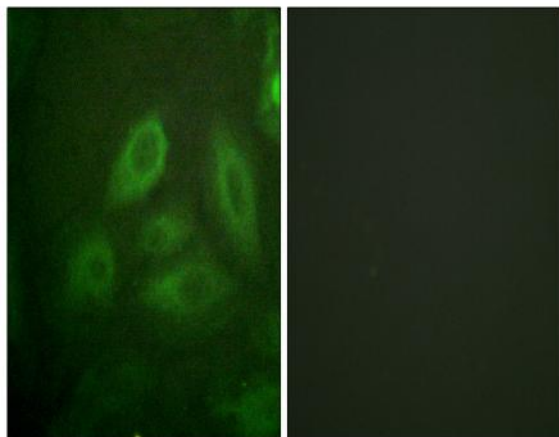
Products Images



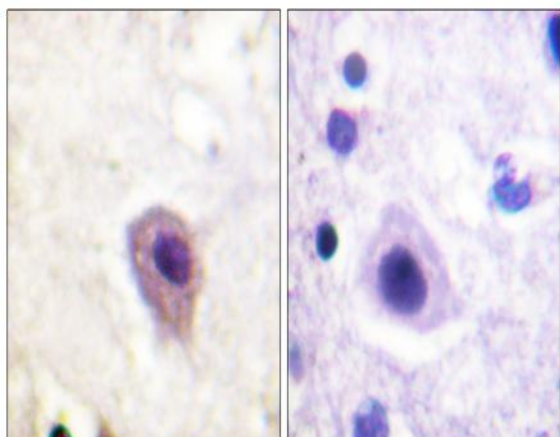
Western Blot analysis of 3T3 cells using Phospho-CRMP-2 (T514) Polyclonal Antibody



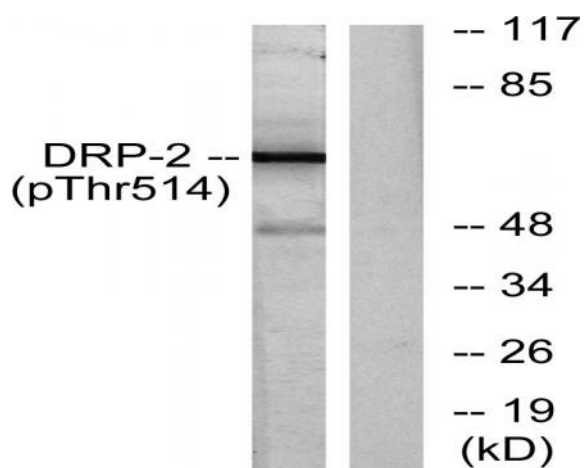
Enzyme-Linked Immunosorbent Assay (Phospho-ELISA) for Immunogen Phosphopeptide (Phospho-left) and Non-Phosphopeptide (Phospho-right), using DRP-2 (Phospho-Thr514) Antibody



Immunofluorescence analysis of HeLa cells, using DRP-2 (Phospho-Thr514) Antibody. The picture on the right is blocked with the phospho peptide.



Immunohistochemistry analysis of paraffin-embedded human brain, using DRP-2 (Phospho-Thr514) Antibody. The picture on the right is blocked with the phospho peptide.



Western blot analysis of lysates from NIH/3T3 cells treated with PMA 125ng/ml 30', using DRP-2 (Phospho-Thr514) Antibody. The lane on the right is blocked with the phospho peptide.