

Ras-GRF1 (phospho Ser916) Polyclonal Antibody

Catalog No :	YP0975
Reactivity :	Mouse;Rat
Applications :	WB;IHC;IF;ELISA
Target :	Ras-GRF1
Gene Name :	RASGRF1
Protein Name :	Ras-specific guanine nucleotide-releasing factor 1
Human Swiss Prot No :	Q13972
Mouse Gene Id :	19417
Rat Gene Id :	192213
Rat Swiss Prot No :	P28818
Immunogen :	The antiserum was produced against synthesized peptide derived from mouse Ras-GRF1 around the phosphorylation site of Ser916. AA range:882-931
Specificity :	Phospho-Ras-GRF1 (S916) Polyclonal Antibody detects endogenous levels of Ras-GRF1 protein only when phosphorylated at S916.
Formulation :	Liquid in PBS containing 50% glycerol, 0.5% BSA and 0.02% sodium azide.
Source :	Polyclonal, Rabbit,IgG
Dilution :	WB 1:500-2000 IHC 1:100 - 1:300. IF 1:200 - 1:1000. ELISA: 1:20000. Not yet tested in other applications.
Purification :	The antibody was affinity-purified from rabbit antiserum by affinity-chromatography using epitope-specific immunogen.
Concentration :	1 mg/ml

Storage Stability : -15°C to -25°C/1 year(Do not lower than -25°C)

Molecularweight : 145kD

Cell Pathway : MAPK

Background :]RASGRF1 (Ras Protein Specific Guanine Nucleotide Releasing Factor 1) is a Protein Coding gene. Diseases associated with RASGRF1 include bleeding disorder, platelet-type, 18 and refractive error. Among its related pathways are Signaling by GPCR and Immune System. GO annotations related to this gene include guanyl-nucleotide exchange factor activity and Ras guanyl-nucleotide exchange factor activity. An important paralog of this gene is RALGDS. romotes the exchange of Ras-bound GDP by GTP.

Tag : hot

Sort : 13825

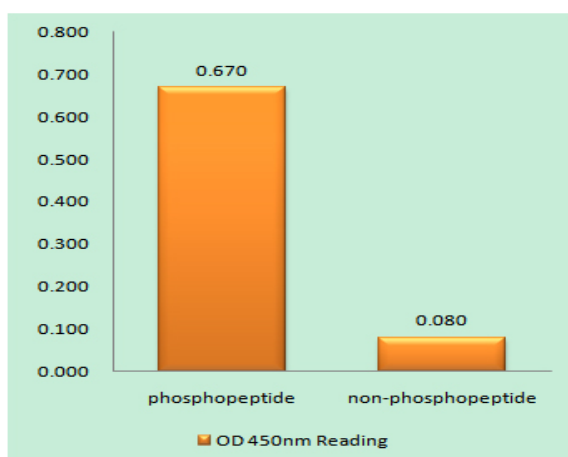
No2 : 3321S

No4 : 1

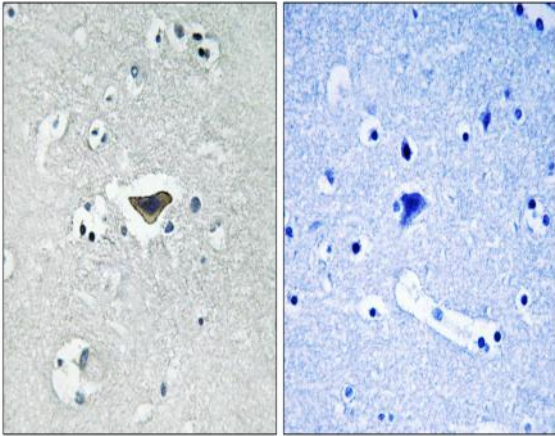
Host : Rabbit

Modifications : Phospho

Products Images



Enzyme-Linked Immunosorbent Assay (Phospho-ELISA) for Immunogen Phosphopeptide (Phospho-left) and Non-Phosphopeptide (Phospho-right), using Ras-GRF1 (Phospho-Ser916) Antibody



Immunohistochemistry analysis of paraffin-embedded human brain, using Ras-GRF1 (Phospho-Ser916) Antibody. The picture on the right is blocked with the phospho peptide.