

IPP-2 (phospho Ser120/S121) Polyclonal Antibody

Catalog No :	YP1011
Reactivity :	Human;Mouse;Rat
Applications :	IHC;IF;ELISA
Target :	IPP-2
Gene Name :	PPP1R2
Protein Name :	Protein phosphatase inhibitor 2
Human Gene Id :	5504
Human Swiss Prot No :	P41236
Mouse Gene Id :	66849
Mouse Swiss Prot No :	Q9DCL8
Rat Gene Id :	192361
Rat Swiss Prot No :	P50411
Immunogen :	The antiserum was produced against synthesized peptide derived from human PPP1R2 around the phosphorylation site of Ser120 and Ser121. AA range:86-135
Specificity :	Phospho-IPP-2 (S120/S121) Polyclonal Antibody detects endogenous levels of IPP-2 protein only when phosphorylated at S120/S121.
Formulation :	Liquid in PBS containing 50% glycerol, 0.5% BSA and 0.02% sodium azide.
Source :	Polyclonal, Rabbit,IgG
Dilution :	IHC 1:100 - 1:300. ELISA: 1:5000.. IF 1:50-200
Purification :	The antibody was affinity-purified from rabbit antiserum by affinity-

chromatography using epitope-specific immunogen.

Concentration : 1 mg/ml

Storage Stability : -15°C to -25°C/1 year(Do not lower than -25°C)

Molecularweight : 23kD

Background : Protein phosphatase-1 (PP1) is one of the main eukaryotic serine/threonine phosphatases. The protein encoded by this gene binds to the catalytic subunit of PP1, strongly inhibiting its activity. Ten related pseudogenes have been found throughout the human genome. Several splice variants encoding different isoforms have been found for this gene. [provided by RefSeq, Oct 2015],

Function : function:Inhibitor of protein-phosphatase 1.,PTM:Phosphorylation on Thr-73 by GSK3 activates PP1 by dissociating the PP1-PPP1R2 complex (By similarity). Phosphorylation on Ser-44 by ATM activates PP1 by dissociating the PP1-PPP1R2 complex.,similarity:Belongs to the protein phosphatase inhibitor 2 family.,subunit:Heterodimer with PP1.,

Subcellular Location : protein phosphatase type 1 complex,

Expression : Epithelium,Heart,Platelet,Skin,Testis,

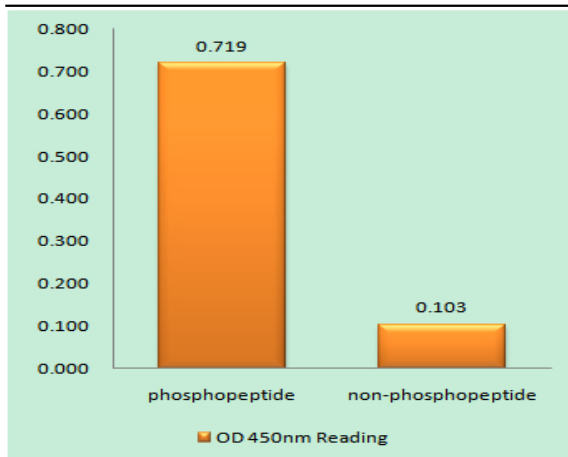
Sort : 8645

No4 : 1

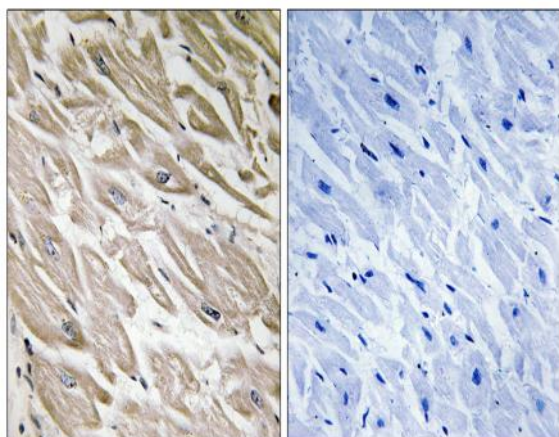
Host : Rabbit

Modifications : Phospho

Products Images



Enzyme-Linked Immunosorbent Assay (Phospho-ELISA) for Immunogen Phosphopeptide (Phospho-left) and Non-Phosphopeptide (Phospho-right), using PPP1R2 (Phospho-Ser120+Ser121) Antibody



Immunohistochemistry analysis of paraffin-embedded human heart, using PPP1R2 (Phospho-Ser120+Ser121) Antibody. The picture on the right is blocked with the phospho peptide.