

IGF-IR (phospho Tyr1346) Polyclonal Antibody

Catalog No :	YP1027
Reactivity :	Human;Mouse;Rat
Applications :	IHC;IF;ELISA
Target :	IGF-1R
Fields :	>>EGFR tyrosine kinase inhibitor resistance;>>Endocrine resistance;>>MAPK signaling pathway;>>Ras signaling pathway;>>Rap1 signaling pathway;>>HIF-1 signaling pathway;>>FoxO signaling pathway;>>Oocyte meiosis;>>Autophagy - animal;>>Endocytosis;>>mTOR signaling pathway;>>PI3K-Akt signaling pathway;>>AMPK signaling pathway;>>Longevity regulating pathway;>>Longevity regulating pathway - multiple species;>>Focal adhesion;>>Adherens junction;>>Signaling pathways regulating pluripotency of stem cells;>>Long-term depression;>>Ovarian steroidogenesis;>>Progesterone-mediated oocyte maturation;>>Pathways in cancer;>>Transcriptional misregulation in cancer;>>Proteoglycans in cancer;>>Glioma;>>Prostate cancer;>>Melanoma;>>Breast cancer;>>Hepatocellular carcinoma
Gene Name :	IGF1R
Protein Name :	Insulin-like growth factor 1 receptor
Human Gene Id :	3480
Human Swiss Prot No :	P08069
Mouse Gene Id :	16001
Mouse Swiss Prot No :	Q60751
Rat Gene Id :	25718
Rat Swiss Prot No :	P24062
Immunogen :	The antiserum was produced against synthesized peptide derived from human IGF1R around the phosphorylation site of Tyr1346. AA range:1311-1360

Specificity :	Phospho-IGF-IR (Y1346) Polyclonal Antibody detects endogenous levels of IGF-IR protein only when phosphorylated at Y1346.
Formulation :	Liquid in PBS containing 50% glycerol, 0.5% BSA and 0.02% sodium azide.
Source :	Polyclonal, Rabbit,IgG
Dilution :	IHC 1:100 - 1:300. ELISA: 1:40000.. IF 1:50-200
Purification :	The antibody was affinity-purified from rabbit antiserum by affinity-chromatography using epitope-specific immunogen.
Concentration :	1 mg/ml
Storage Stability :	-15°C to -25°C/1 year(Do not lower than -25°C)
Molecularweight :	155kD
Observed Band :	pro: 155kD, recetor beta: 95kD
Cell Pathway :	Oocyte meiosis;Endocytosis;Focal adhesion;Adherens_Junction;Long-term depression;Progesterone-mediated oocyte maturation;Pathways in cancer;Colorectal cancer;Glioma;Prostate cancer;Melanoma;
Background :	This receptor binds insulin-like growth factor with a high affinity. It has tyrosine kinase activity. The insulin-like growth factor I receptor plays a critical role in transformation events. Cleavage of the precursor generates alpha and beta subunits. It is highly overexpressed in most malignant tissues where it functions as an anti-apoptotic agent by enhancing cell survival. Alternatively spliced transcript variants encoding distinct isoforms have been found for this gene. [provided by RefSeq, May 2014],
Function :	catalytic activity:ATP + a [protein]-L-tyrosine = ADP + a [protein]-L-tyrosine phosphate.,disease:Defects in IGF1R may be a cause in some cases of resistance to insulin-like growth factor 1 (IGF1 resistance) [MIM:270450]. IGF1 resistance is a growth deficiency disorder characterized by intrauterine growth retardation and poor postnatal growth accompanied with increased plasma IGF1.,enzyme regulation:Autophosphorylation activates the kinase activity.,function:This receptor binds insulin-like growth factor 1 (IGF1) with a high affinity and IGF2 with a lower affinity. It has a tyrosine-protein kinase activity, which is necessary for the activation of the IGF1-stimulated downstream signaling cascade. When present in a hybrid receptor with INSR, binds IGF1. PubMed:12138094 shows that hybrid receptors composed of IGF1R and INSR isoform Long are activated with a high affinity by IGF1, with low a
Subcellular	Cell membrane ; Single-pass type I membrane protein .

Expression : Found as a hybrid receptor with INSR in muscle, heart, kidney, adipose tissue, skeletal muscle, hepatoma, fibroblasts, spleen and placenta (at protein level). Expressed in a variety of tissues. Overexpressed in tumors, including melanomas, cancers of the colon, pancreas prostate and kidney.

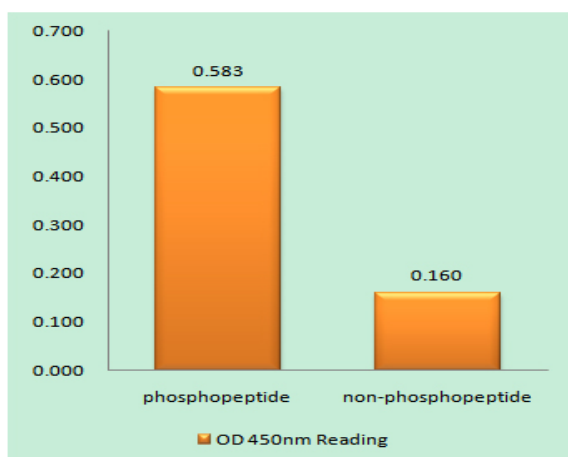
Sort : 8367

No4 : 1

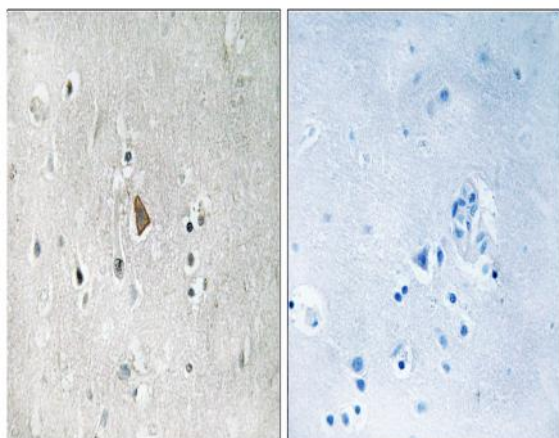
Host : Rabbit

Modifications : Phospho

Products Images



Enzyme-Linked Immunosorbent Assay (Phospho-ELISA) for Immunogen Phosphopeptide (Phospho-left) and Non-Phosphopeptide (Phospho-right), using IGF1R (Phospho-Tyr1346) Antibody



Immunohistochemistry analysis of paraffin-embedded human brain, using IGF1R (Phospho-Tyr1346) Antibody. The picture on the right is blocked with the phospho peptide.