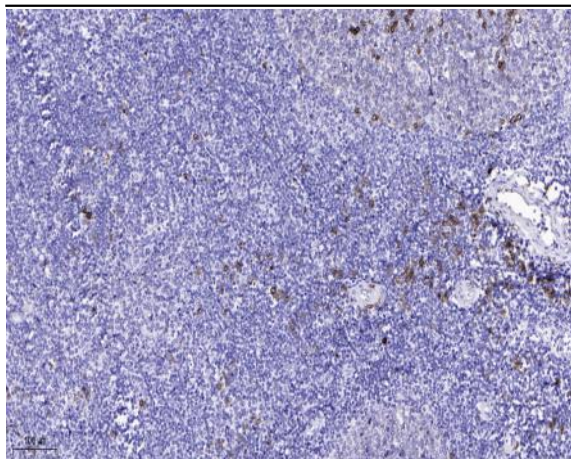


cGKII (phospho Ser126) Polyclonal Antibody

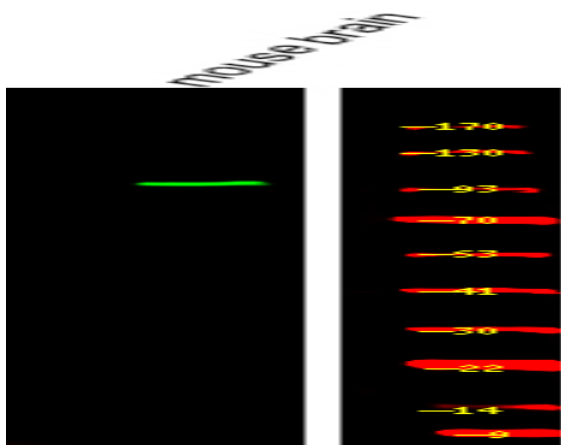
Catalog No :	YP1056
Reactivity :	Human;Mouse;Rat
Applications :	IHC;IF;ELISA
Target :	cGKII
Fields :	>>cGMP-PKG signaling pathway;>>Gap junction;>>Platelet activation;>>Circadian entrainment;>>Thermogenesis;>>Long-term depression;>>Olfactory transduction;>>Regulation of lipolysis in adipocytes;>>Renin secretion;>>Salivary secretion
Gene Name :	PRKG2
Protein Name :	cGMP-dependent protein kinase 2
Human Gene Id :	5593
Human Swiss Prot No :	Q13237
Mouse Swiss Prot No :	Q61410
Rat Gene Id :	25523
Rat Swiss Prot No :	Q64595
Immunogen :	The antiserum was produced against synthesized peptide derived from human PKG2 around the phosphorylation site of Ser126. AA range:92-141
Specificity :	Phospho-cGKII (S126) Polyclonal Antibody detects endogenous levels of cGKII protein only when phosphorylated at S126.
Formulation :	Liquid in PBS containing 50% glycerol, 0.5% BSA and 0.02% sodium azide.
Source :	Polyclonal, Rabbit,IgG
Dilution :	IHC 1:100 - 1:300. ELISA: 1:5000.. IF 1:50-200

Purification :	The antibody was affinity-purified from rabbit antiserum by affinity-chromatography using epitope-specific immunogen.
Concentration :	1 mg/ml
Storage Stability :	-15°C to -25°C/1 year(Do not lower than -25°C)
Molecularweight :	87kD
Cell Pathway :	Gap junction;Long-term depression;Olfactory transduction;
Background :	This gene encodes a protein that belongs to the serine/threonine protein kinase family of proteins. The encoded protein plays a role in the regulation of fluid balance in the intestine. A similar protein in mouse is thought to regulate differentiation and proliferation of cells in the colon. Alternate splicing results in multiple transcript variants. [provided by RefSeq, Sep 2013],
Function :	catalytic activity:ATP + a protein = ADP + a phosphoprotein.,enzyme regulation:Binding of cGMP results in enzyme activation.,similarity:Belongs to the protein kinase superfamily. AGC Ser/Thr protein kinase family. cGMP subfamily.,similarity:Contains 1 AGC-kinase C-terminal domain.,similarity:Contains 1 protein kinase domain.,similarity:Contains 2 cyclic nucleotide-binding domains.,tissue specificity:Highly concentrated in brain, lung and intestinal mucosa.,
Subcellular Location :	Apical cell membrane ; Lipid-anchor .
Expression :	Highly concentrated in brain, lung and intestinal mucosa.
Sort :	3915
No4 :	1
Host :	Rabbit
Modifications :	Phospho

Products Images



Immunohistochemical analysis of paraffin-embedded human tonsil. 1, Antibody was diluted at 1:200(4° overnight). 2, Tris-EDTA,pH9.0 was used for antigen retrieval. 3,Secondary antibody was diluted at 1:200(room temperature, 45min).



Western Blot analysis of various,using primary antibody at 1:1000 dilution. Secondary antibody(catalog#:RS23920) was diluted at 1:10000