

**Cdc25C (phospho Ser198) Polyclonal Antibody**

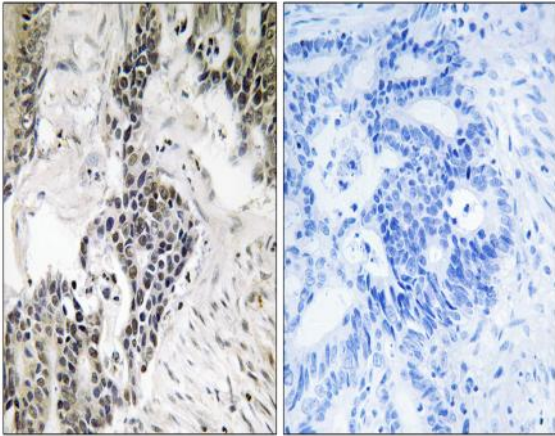
<b>Catalog No :</b>	YP1085
<b>Reactivity :</b>	Human;Rat;Mouse;
<b>Applications :</b>	IHC;IF;ELISA
<b>Target :</b>	Cdc25C
<b>Fields :</b>	>>Cell cycle;>>Oocyte meiosis;>>Progesterone-mediated oocyte maturation;>>Human immunodeficiency virus 1 infection;>>MicroRNAs in cancer
<b>Gene Name :</b>	CDC25C
<b>Protein Name :</b>	M-phase inducer phosphatase 3
<b>Human Gene Id :</b>	995
<b>Human Swiss Prot No :</b>	P30307
<b>Mouse Swiss Prot No :</b>	P48967
<b>Immunogen :</b>	The antiserum was produced against synthesized peptide derived from human CDC25C around the phosphorylation site of Ser198. AA range:164-213
<b>Specificity :</b>	Phospho-Cdc25C (S198) Polyclonal Antibody detects endogenous levels of Cdc25C protein only when phosphorylated at S198.
<b>Formulation :</b>	Liquid in PBS containing 50% glycerol, 0.5% BSA and 0.02% sodium azide.
<b>Source :</b>	Polyclonal, Rabbit,IgG
<b>Dilution :</b>	IHC 1:100 - 1:300. ELISA: 1:5000.. IF 1:50-200
<b>Purification :</b>	The antibody was affinity-purified from rabbit antiserum by affinity-chromatography using epitope-specific immunogen.
<b>Concentration :</b>	1 mg/ml

---

<b>Storage Stability :</b>	-15°C to -25°C/1 year(Do not lower than -25°C)
<b>Molecularweight :</b>	53kD
<b>Cell Pathway :</b>	Cell_Cycle_G1S;Cell_Cycle_G2M_DNA;Oocyte meiosis;Progesterone-mediated oocyte maturation;
<b>Background :</b>	cell division cycle 25C(CDC25C) Homo sapiens This gene encodes a conserved protein that plays a key role in the regulation of cell division. The encoded protein directs dephosphorylation of cyclin B-bound CDC2 and triggers entry into mitosis. It also suppresses p53-induced growth arrest. Multiple alternatively spliced transcript variants of this gene have been described. [provided by RefSeq, Dec 2015],
<b>Function :</b>	catalytic activity:Protein tyrosine phosphate + H(2)O = protein tyrosine + phosphate.,developmental stage:Expressed predominantly in G2 phase.,function:Functions as a dosage-dependent inducer in mitotic control. It is a tyrosine protein phosphatase required for progression of the cell cycle. It directly dephosphorylates CDC2 and activate its kinase activity.,PTM:Phosphorylated by CHK1 on Ser-216. This phosphorylation creates a binding site for 14-3-3 protein and inhibits the phosphatase.,similarity:Belongs to the MPI phosphatase family.,similarity:Contains 1 rhodanese domain.,subunit:Interacts with HIV-1 Vpr, thereby inactivating CDC25C phosphatase activity.,
<b>Subcellular Location :</b>	Nucleus .
<b>Expression :</b>	Colon carcinoma,Epithelium,Skin,Testis,
<b>Sort :</b>	3734
<b>No2 :</b>	9529S
<b>No4 :</b>	1
<b>Host :</b>	Rabbit
<b>Modifications :</b>	Phospho

---

**Products Images**



Immunohistochemistry analysis of paraffin-embedded human colon carcinoma, using CDC25C (Phospho-Ser198) Antibody. The picture on the right is blocked with the phospho peptide.