

**HSP20 (phospho Ser16) Polyclonal Antibody**

<b>Catalog No :</b>	YP1130
<b>Reactivity :</b>	Human;Mouse;Rat
<b>Applications :</b>	IHC;IF;ELISA
<b>Target :</b>	HSP20
<b>Gene Name :</b>	HSPB6
<b>Protein Name :</b>	Heat shock protein beta-6
<b>Human Gene Id :</b>	126393
<b>Human Swiss Prot No :</b>	O14558
<b>Mouse Gene Id :</b>	243912
<b>Mouse Swiss Prot No :</b>	Q5EBG6
<b>Rat Gene Id :</b>	192245
<b>Rat Swiss Prot No :</b>	P97541
<b>Immunogen :</b>	The antiserum was produced against synthesized peptide derived from human HSP20 around the phosphorylation site of Ser16. AA range:5-54
<b>Specificity :</b>	Phospho-HSP20 (S16) Polyclonal Antibody detects endogenous levels of HSP20 protein only when phosphorylated at S16.
<b>Formulation :</b>	Liquid in PBS containing 50% glycerol, 0.5% BSA and 0.02% sodium azide.
<b>Source :</b>	Polyclonal, Rabbit,IgG
<b>Dilution :</b>	IHC 1:100 - 1:300. IF 1:200 - 1:1000. ELISA: 1:5000. Not yet tested in other applications.
<b>Purification :</b>	The antibody was affinity-purified from rabbit antiserum by affinity-

chromatography using epitope-specific immunogen.

**Concentration :** 1 mg/ml

**Storage Stability :** -15°C to -25°C/1 year(Do not lower than -25°C)

**Molecularweight :** 17kD

**Background :** This locus encodes a heat shock protein. The encoded protein likely plays a role in smooth muscle relaxation. [provided by RefSeq, Jan 2012],

**Function :** PTM:The N-terminus is blocked.,similarity:Belongs to the small heat shock protein (HSP20) family.,subunit:May exist as disulfide-linked dimer and monomer.,

**Subcellular Location :** Cytoplasm . Nucleus . Secreted . Translocates to nuclear foci during heat shock.

**Expression :** Muscle,Skeletal muscle,Skin,

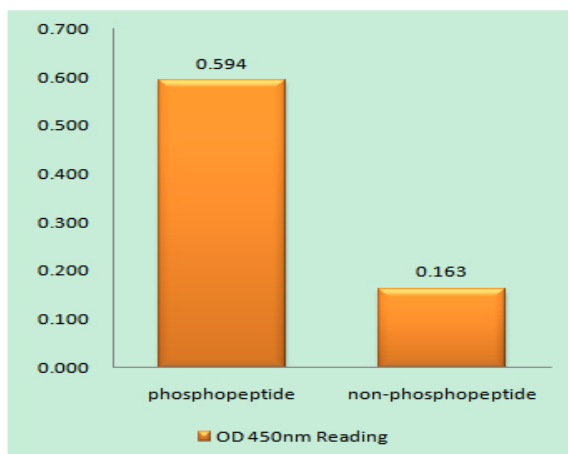
**Sort :** 7887

**No4 :** 1

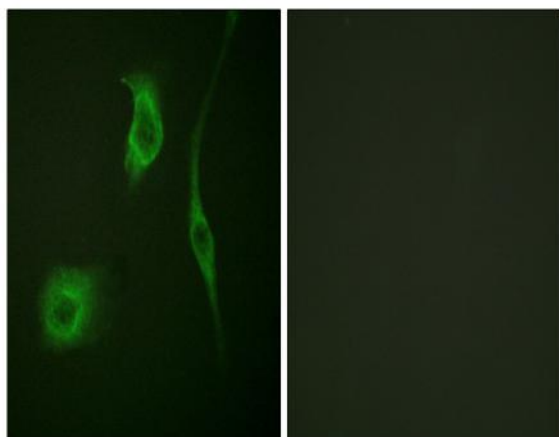
**Host :** Rabbit

**Modifications :** Phospho

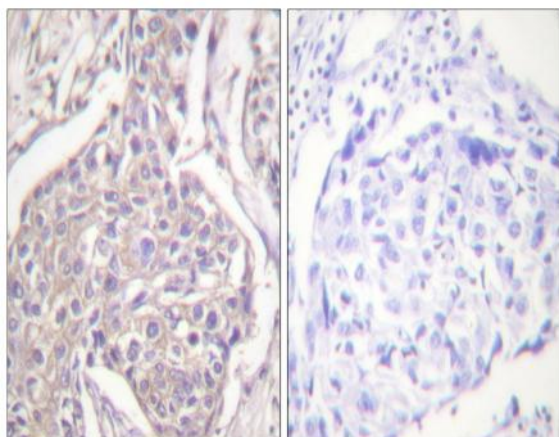
## Products Images



Enzyme-Linked Immunosorbent Assay (Phospho-ELISA) for Immunogen Phosphopeptide (Phospho-left) and Non-Phosphopeptide (Phospho-right), using HSP20 (Phospho-Ser16) Antibody



Immunofluorescence analysis of HeLa cells, using HSP20 (Phospho-Ser16) Antibody. The picture on the right is blocked with the phospho peptide.



Immunohistochemistry analysis of paraffin-embedded human breast carcinoma, using HSP20 (Phospho-Ser16) Antibody. The picture on the right is blocked with the phospho peptide.