

**Survivin (phospho Thr117) Polyclonal Antibody**

|                              |  |
|------------------------------|--|
| <b>Catalog No :</b>          | YP1132   |
| <b>Reactivity :</b>          | Human;Mouse;Rat  |
| <b>Applications :</b>        | IHC;IF;ELISA   |
| <b>Target :</b>              | Survivin   |
| <b>Fields :</b>              | >>Platinum drug resistance;>>Apoptosis;>>Apoptosis - multiple species;>>Hippo signaling pathway;>>Hepatitis B;>>Pathways in cancer;>>Chemical carcinogenesis - receptor activation;>>Colorectal cancer |
| <b>Gene Name :</b>           | BIRC5  |
| <b>Protein Name :</b>        | Baculoviral IAP repeat-containing protein 5  |
| <b>Human Gene Id :</b>       | 332  |
| <b>Human Swiss Prot No :</b> | O15392   |
| <b>Mouse Gene Id :</b>       | 11799  |
| <b>Mouse Swiss Prot No :</b> | O70201   |
| <b>Rat Gene Id :</b>         | 64041  |
| <b>Rat Swiss Prot No :</b>   | Q9JHY7   |
| <b>Immunogen :</b>           | The antiserum was produced against synthesized peptide derived from human Survivin around the phosphorylation site of Thr117. AA range:86-135  |
| <b>Specificity :</b>         | Phospho-Survivin (T117) Polyclonal Antibody detects endogenous levels of Survivin protein only when phosphorylated at T117.  |
| <b>Formulation :</b>         | Liquid in PBS containing 50% glycerol, 0.5% BSA and 0.02% sodium azide.  |
| <b>Source :</b>              | Polyclonal, Rabbit,IgG   |

**Dilution :** IHC 1:100 - 1:300. IF 1:200 - 1:1000. ELISA: 1:5000. Not yet tested in other applications.

---

**Purification :** The antibody was affinity-purified from rabbit antiserum by affinity-chromatography using epitope-specific immunogen.

---

**Concentration :** 1 mg/ml

---

**Storage Stability :** -15°C to -25°C/1 year(Do not lower than -25°C)

---

**Molecularweight :** 16kD

---

**Cell Pathway :** Pathways in cancer;Colorectal cancer;

---

**Background :** This gene is a member of the inhibitor of apoptosis (IAP) gene family, which encode negative regulatory proteins that prevent apoptotic cell death. IAP family members usually contain multiple baculovirus IAP repeat (BIR) domains, but this gene encodes proteins with only a single BIR domain. The encoded proteins also lack a C-terminus RING finger domain. Gene expression is high during fetal development and in most tumors, yet low in adult tissues. Alternatively spliced transcript variants encoding distinct isoforms have been found for this gene. [provided by RefSeq, Jun 2011],

---

**Function :** domain:The BIR repeat is necessary and sufficient for HBXIP binding.,function:May play a role in neoplasia. May counteract a default induction of apoptosis in G2/M phase. Interacts with tubulin. Inhibitor of caspase-3 and caspase-7. Component of the chromosomal passenger complex (CPC), a complex that acts as a key regulator of mitosis. The CPC complex has essential functions at the centromere in ensuring correct chromosome alignment and segregation and is required for chromatin-induced microtubule stabilization and spindle assembly. Isoforms 2 and 3 do not appear to play vital roles in mitosis. Isoform 3 shows a marked reduction in its anti-apoptotic effects when compared with the displayed wild-type isoform.,similarity:Belongs to the IAP family.,similarity:Contains 1 BIR repeat.,subcellular location:Localizes on chromosome arms and inner centromeres from prophase through metaphase and t

---

**Subcellular Location :** Cytoplasm . Nucleus . Chromosome . Chromosome, centromere . Cytoplasm, cytoskeleton, spindle . Chromosome, centromere, kinetochore . Midbody . Localizes at the centromeres from prophase to metaphase, at the spindle midzone during anaphase and at the midbody during telophase and cytokinesis. Accumulates in the nucleus upon treatment with leptomycin B (LMB), a XPO1/CRM1 nuclear export inhibitor (By similarity). Localizes on chromosome arms and inner centromeres from prophase through metaphase. Localizes to kinetochores in metaphase, distributes to the midzone microtubules in anaphase and at telophase, localizes exclusively to the midbody (PubMed:11084331). Colocalizes with AURKB at mitotic chromosomes (PubMed:14610074).

---

Acetylation at Lys-129 directs its localization to the nucleus by enhanci

**Expression :** Expressed only in fetal kidney and liver, and to lesser extent, lung and brain (PubMed:10626797). Abundantly expressed in adenocarcinoma (lung, pancreas, colon, breast, and prostate) and in high-grade lymphomas (PubMed:14741722, PubMed:16329164). Also expressed in various renal cell carcinoma cell lines (PubMed:10626797). Expressed in cochlea including the organ of Corti, the lateral wall, the interdental cells of the Limbus as well as in Schwann cells and cells of the cochlear nerve and the spiral ganglions (at protein level). Not expressed in cells of the inner and outer sulcus or the Reissner's membrane (at protein level) (PubMed:21364656, PubMed:20627126).

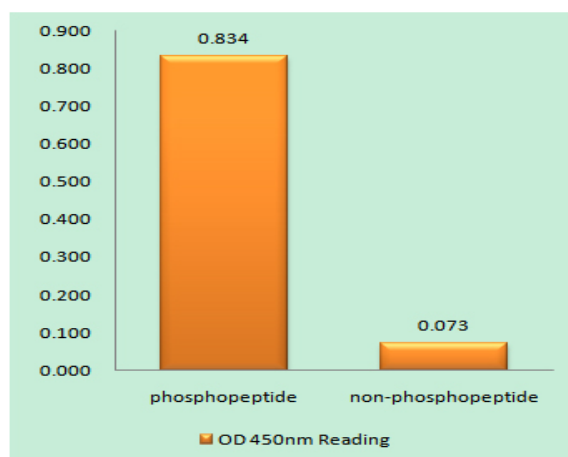
**Sort :** 16771

**No4 :** 1

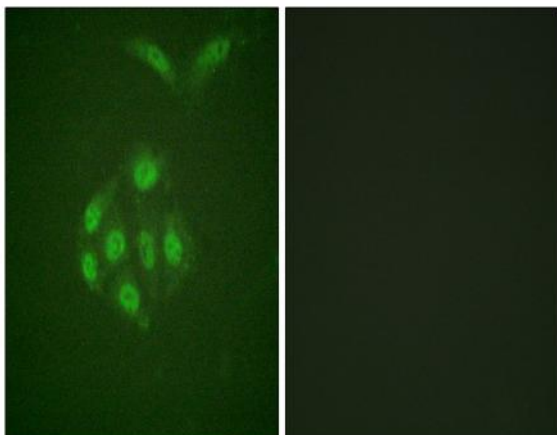
**Host :** Rabbit

**Modifications :** Phospho

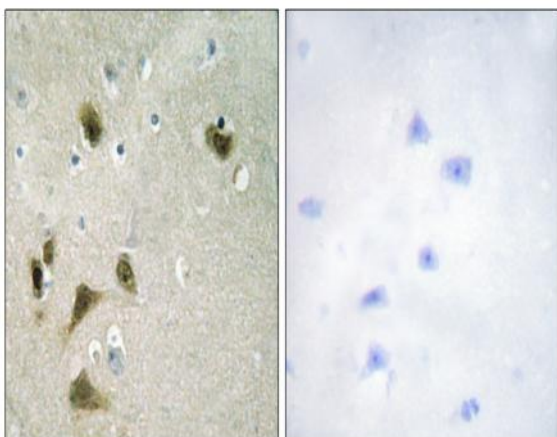
## Products Images



Enzyme-Linked Immunosorbent Assay (Phospho-ELISA) for Immunogen Phosphopeptide (Phospho-left) and Non-Phosphopeptide (Phospho-right), using Survivin (Phospho-Thr117) Antibody



Immunofluorescence analysis of A549 cells, using Survivin (Phospho-Thr117) Antibody. The picture on the right is blocked with the phospho peptide.



Immunohistochemistry analysis of paraffin-embedded human brain, using Survivin (Phospho-Thr117) Antibody. The picture on the right is blocked with the phospho peptide.