

## Syndecan-4 (phospho Ser179) Polyclonal Antibody

<b>Catalog No :</b>	YP1150
<b>Reactivity :</b>	Human;Mouse;Rat
<b>Applications :</b>	IHC;IF;ELISA
<b>Target :</b>	Syndecan-4
<b>Fields :</b>	>>ECM-receptor interaction;>>Cell adhesion molecules;>>Proteoglycans in cancer;>>Fluid shear stress and atherosclerosis
<b>Gene Name :</b>	SDC4
<b>Protein Name :</b>	Syndecan-4
<b>Human Gene Id :</b>	6385
<b>Human Swiss Prot No :</b>	P31431
<b>Mouse Gene Id :</b>	20971
<b>Mouse Swiss Prot No :</b>	O35988
<b>Rat Gene Id :</b>	24771
<b>Rat Swiss Prot No :</b>	P34901
<b>Immunogen :</b>	The antiserum was produced against synthesized peptide derived from human Syndecan4 around the phosphorylation site of Ser179. AA range:145-194
<b>Specificity :</b>	Phospho-Syndecan-4 (S179) Polyclonal Antibody detects endogenous levels of Syndecan-4 protein only when phosphorylated at S179.
<b>Formulation :</b>	Liquid in PBS containing 50% glycerol, 0.5% BSA and 0.02% sodium azide.
<b>Source :</b>	Polyclonal, Rabbit,IgG
<b>Dilution :</b>	IHC 1:100 - 1:300. IF 1:200 - 1:1000. ELISA: 1:20000. Not yet tested in other

applications.

---

**Purification :** The antibody was affinity-purified from rabbit antiserum by affinity-chromatography using epitope-specific immunogen.

---

**Concentration :** 1 mg/ml

---

**Storage Stability :** -15°C to -25°C/1 year(Do not lower than -25°C)

---

**Molecularweight :** 22kD

---

**Cell Pathway :** ECM-receptor interaction;Cell adhesion molecules (CAMs);

---

**Background :** The protein encoded by this gene is a transmembrane (type I) heparan sulfate proteoglycan that functions as a receptor in intracellular signaling. The encoded protein is found as a homodimer and is a member of the syndecan proteoglycan family. This gene is found on chromosome 20, while a pseudogene has been found on chromosome 22. [provided by RefSeq, Jul 2008],

---

**Function :** function:Cell surface proteoglycan that bears heparan sulfate.,function:Cell surface proteoglycan.,similarity:Belongs to the syndecan proteoglycan family.,subunit:Homodimer. Interacts with CDCP1, with GIPC PDZ domain and with NUDT16L1/SDOS (By similarity). Interacts with SDCBP.,tissue specificity:Expressed in epithelial and fibroblastic cells.,

---

**Subcellular Location :** [Isoform 1]: Membrane ; Single-pass type I membrane protein . Secreted . Shedding of the ectodomain produces a soluble form. .; [Isoform 2]: Secreted.

---

**Expression :** Expressed in epithelial and fibroblastic cells.

---

**Sort :** 16817

---

**No4 :** 1

---

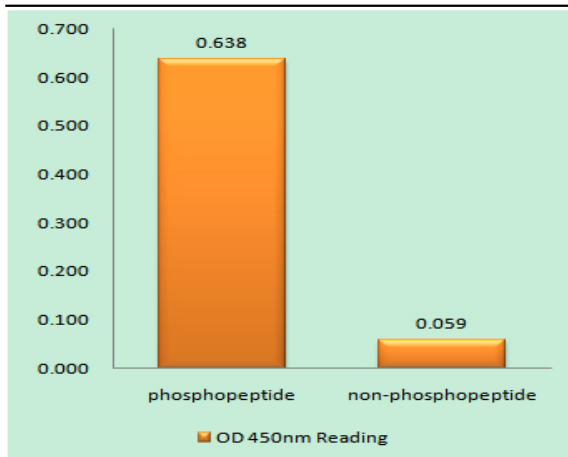
**Host :** Rabbit

---

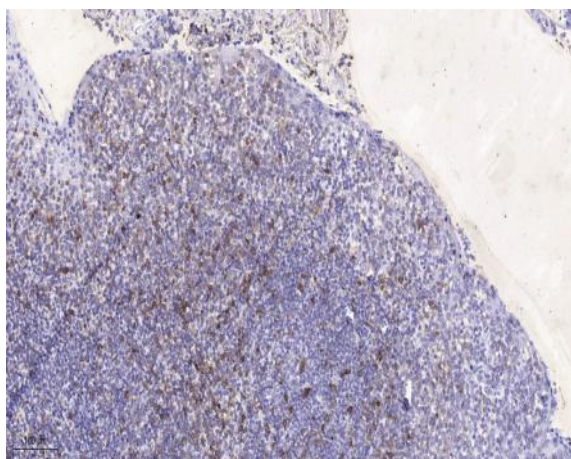
**Modifications :** Phospho

---

**Products Images**



Enzyme-Linked Immunosorbent Assay (Phospho-ELISA) for Immunogen Phosphopeptide (Phospho-left) and Non-Phosphopeptide (Phospho-right), using Syndecan4 (Phospho-Ser179) Antibody



Immunohistochemical analysis of paraffin-embedded human tonsil. 1, Antibody was diluted at 1:200(4° overnight). 2, Tris-EDTA,pH9.0 was used for antigen retrieval. 3,Secondary antibody was diluted at 1:200(room temperature, 45min).