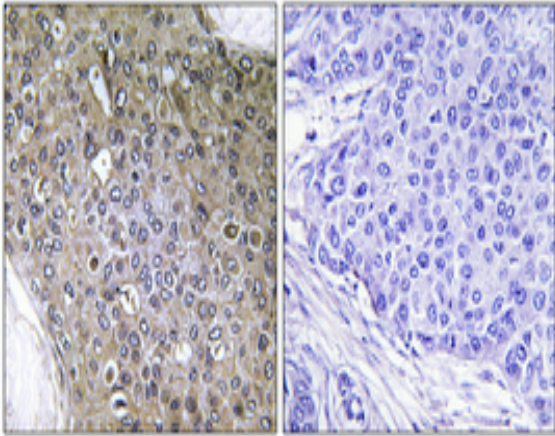


TGFβ RIII (phospho Thr842) Polyclonal Antibody

Catalog No :	YP1161
Reactivity :	Human;Mouse;Rat
Applications :	IHC;IF;ELISA
Target :	TGFβ RIII
Gene Name :	TGFBR3
Protein Name :	Transforming growth factor beta receptor type 3
Human Gene Id :	7049
Human Swiss Prot No :	Q03167
Mouse Gene Id :	21814
Mouse Swiss Prot No :	O88393
Rat Gene Id :	29610
Rat Swiss Prot No :	P26342
Immunogen :	The antiserum was produced against synthesized peptide derived from human TGF beta Receptor III around the phosphorylation site of Thr842. AA range:801-850
Specificity :	Phospho-TGFβ RIII (T842) Polyclonal Antibody detects endogenous levels of TGFβ RIII protein only when phosphorylated at T842.
Formulation :	Liquid in PBS containing 50% glycerol, 0.5% BSA and 0.02% sodium azide.
Source :	Polyclonal, Rabbit,IgG
Dilution :	IHC 1:100 - 1:300. IF 1:200 - 1:1000. ELISA: 1:5000. Not yet tested in other applications.

Purification :	The antibody was affinity-purified from rabbit antiserum by affinity-chromatography using epitope-specific immunogen.
Concentration :	1 mg/ml
Storage Stability :	-15°C to -25°C/1 year(Do not lower than -25°C)
Molecularweight :	93kD
Background :	This locus encodes the transforming growth factor (TGF)-beta type III receptor. The encoded receptor is a membrane proteoglycan that often functions as a co-receptor with other TGF-beta receptor superfamily members. Ectodomain shedding produces soluble TGFBR3, which may inhibit TGFB signaling. Decreased expression of this receptor has been observed in various cancers. Alternatively spliced transcript variants encoding different isoforms have been identified for this gene.[provided by RefSeq, Sep 2010],
Function :	function: Binds to TGF-beta. Could be involved in capturing and retaining TGF-beta for presentation to the signaling receptors.,PTM: Extensively modified by glycosaminoglycan groups (GAG).,similarity: Contains 1 ZP domain.,subcellular location: Exists both as a membrane-bound form and as soluble form in serum and in the extracellular matrix.,subunit: Interacts with TCTEX1D4.,
Subcellular Location :	Secreted. Secreted, extracellular space. Cell membrane ; Single-pass type I membrane protein . Exists both as a membrane-bound form and as soluble form in serum and in the extracellular matrix.
Expression :	Blood,Brain,Placenta,Tongue,
Sort :	17083
No4 :	1
Host :	Rabbit
Modifications :	Phospho

Products Images



Immunohistochemical analysis of paraffin-embedded Human breast cancer. Antibody was diluted at 1:100(4° overnight). High-pressure and temperature Tris-EDTA,pH8.0 was used for antigen retrieval. Negative contrl (right) obtaned from antibody was pre-absorbed by immunogen peptide.