

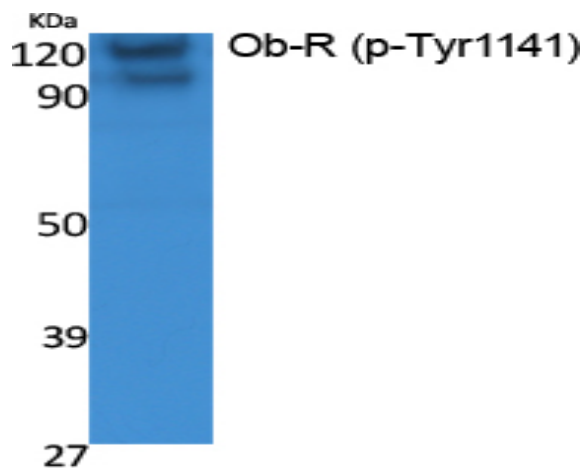
Ob-R (phospho Tyr1141) Polyclonal Antibody

Catalog No :	YP1200
Reactivity :	Human;Mouse
Applications :	WB;ELISA
Target :	Ob-R
Fields :	>>Cytokine-cytokine receptor interaction;>>Neuroactive ligand-receptor interaction;>>AMPK signaling pathway;>>JAK-STAT signaling pathway;>>Adipocytokine signaling pathway;>>Non-alcoholic fatty liver disease
Gene Name :	LEPR OBR
Protein Name :	Leptin receptor
Human Gene Id :	3953
Human Swiss Prot No :	P48357
Mouse Gene Id :	16847
Mouse Swiss Prot No :	P48356
Immunogen :	Synthesized phospho-peptide around the phosphorylation site of human Ob-R (phospho Tyr1141)
Specificity :	Phospho-Ob-R (Y1141) Polyclonal Antibody detects endogenous levels of Ob-R protein only when phosphorylated at Y1141.
Formulation :	Liquid in PBS containing 50% glycerol, 0.5% BSA and 0.02% sodium azide.
Source :	Polyclonal, Rabbit,IgG
Dilution :	WB 1:500 - 1:2000. ELISA: 1:5000. Not yet tested in other applications.
Purification :	The antibody was affinity-purified from rabbit antiserum by affinity-chromatography using epitope-specific immunogen.

Concentration :	1 mg/ml
Storage Stability :	-15°C to -25°C/1 year(Do not lower than -25°C)
Observed Band :	132kD
Cell Pathway :	Cytokine-cytokine receptor interaction;Neuroactive ligand-receptor interaction;Jak_STAT;Adipocytokine;
Background :	<p>The protein encoded by this gene belongs to the gp130 family of cytokine receptors that are known to stimulate gene transcription via activation of cytosolic STAT proteins. This protein is a receptor for leptin (an adipocyte-specific hormone that regulates body weight), and is involved in the regulation of fat metabolism, as well as in a novel hematopoietic pathway that is required for normal lymphopoiesis. Mutations in this gene have been associated with obesity and pituitary dysfunction. Alternatively spliced transcript variants encoding different isoforms have been described for this gene. It is noteworthy that this gene and LEPROT gene (GeneID:54741) share the same promoter and the first 2 exons, however, encode distinct proteins (PMID:9207021).[provided by RefSeq, Nov 2010],</p>
Function :	<p>domain:The box 1 motif is required for JAK interaction and/or activation.,domain:The cytoplasmic domain may be essential for intracellular signal transduction by activation of JAK tyrosine kinase and STATs.,domain:The WSXWS motif appears to be necessary for proper protein folding and thereby efficient intracellular transport and cell-surface receptor binding.,function:Receptor for obesity factor (leptin). On ligand binding, mediates signaling through JAK2/STAT3. Involved in the regulation of fat metabolism and, in a hematopoietic pathway, required for normal lymphopoiesis. May play a role in reproduction. Can also mediate the ERK/FOS signaling pathway.,PTM:On ligand binding, phosphorylated on two conserved C-terminal tyrosine residues (isoform B only) by JAK2. Tyr-986 is required for complete binding and activation of PTPN11, ERK/FOS activation and, for interaction with SOCS3 (By similar</p>
Subcellular Location :	Cell membrane ; Single-pass type I membrane protein . Basolateral cell membrane .; [Isoform E]: Secreted .
Expression :	<p>Isoform A is expressed in fetal liver and in hematopoietic tissues and choroid plexus. In adults highest expression in heart, liver, small intestine, prostate and ovary. Low level in lung and kidney. Isoform B is highly expressed in hypothalamus, but also in skeletal muscle. Detected in fundic and antral epithelial cells of the gastric mucosa (PubMed:19159218). Isoform B and isoform A are expressed by NK cells (at protein level) (PubMed:12504075).</p>
Sort :	11036
No4 :	1

Host : Rabbit**Modifications :** Phospho

Products Images



Western Blot analysis of extracts from K562 cells, using Phospho-Ob-R (Y1141) Polyclonal Antibody.