

Catenin- β (phospho Ser552) Polyclonal Antibody

Catalog No :	YP1204
Reactivity :	Human;Mouse;Rat
Applications :	WB;ELISA
Target :	Catenin- β
Fields :	>>Rap1 signaling pathway;>>Wnt signaling pathway;>>Hippo signaling pathway;>>Focal adhesion;>>Adherens junction;>>Signaling pathways regulating pluripotency of stem cells;>>Leukocyte transendothelial migration;>>Melanogenesis;>>Thyroid hormone signaling pathway;>>Cushing syndrome;>>Alcoholic liver disease;>>Alzheimer disease;>>Pathways of neurodegeneration - multiple diseases;>>Bacterial invasion of epithelial cells;>>Salmonella infection;>>Hepatitis C;>>Human cytomegalovirus infection;>>Human papillomavirus infection;>>Kaposi sarcoma-associated herpesvirus infection;>>Pathways in cancer;>>Proteoglycans in cancer;>>Colorectal cancer;>>Endometrial cancer;>>Prostate cancer;>>Thyroid cancer;>>Basal cell carcinoma;>>Breast cancer;>>Hepatocellular carcinoma;>>Gastric cancer;>>Arrhythmogenic right ventricular cardiomyopathy;>>Fluid shear stress and atherosclerosis
Gene Name :	CTNNB1 CTNNB OK/SW-cl.35 PRO2286
Protein Name :	Catenin- β ;b-catenin;Beta catenin;Beta-catenin;Cadherin associated protein;Catenin (cadherin associated protein), beta 1, 88 kDa;Catenin beta 1;Catenin beta-1;CATNB;CHBCAT;CTNB1_HUMAN;CTNNB;CTNNB1;DKFZ
Human Gene Id :	1499
Human Swiss Prot No :	P35222
Mouse Gene Id :	12387
Mouse Swiss Prot No :	Q02248
Rat Gene Id :	84353
Rat Swiss Prot No :	Q9WU82

Immunogen :	Synthesized phospho-peptide around the phosphorylation site of human Catenin- β (phospho Ser552)
Specificity :	Phospho-Catenin- β (S552) Polyclonal Antibody detects endogenous levels of Catenin- β protein only when phosphorylated at S552.
Formulation :	Liquid in PBS containing 50% glycerol, 0.5% BSA and 0.02% sodium azide.
Source :	Polyclonal, Rabbit,IgG
Dilution :	WB 1:500 - 1:2000. ELISA: 1:40000. Not yet tested in other applications.
Purification :	The antibody was affinity-purified from rabbit antiserum by affinity-chromatography using epitope-specific immunogen.
Concentration :	1 mg/ml
Storage Stability :	-15°C to -25°C/1 year(Do not lower than -25°C)
Molecularweight :	85kD
Observed Band :	92kD
Cell Pathway :	WNT;WNT-T CELLFocal adhesion;Adherens_Junction;Adherens_Junction;Leukocyte transendothelial migration;Melanogenesis;Pathogenic Escherichia coli infection;Pathways in cancer;Colorectal cancer;Endometri
Background :	The protein encoded by this gene is part of a complex of proteins that constitute adherens junctions (AJs). AJs are necessary for the creation and maintenance of epithelial cell layers by regulating cell growth and adhesion between cells. The encoded protein also anchors the actin cytoskeleton and may be responsible for transmitting the contact inhibition signal that causes cells to stop dividing once the epithelial sheet is complete. Finally, this protein binds to the product of the APC gene, which is mutated in adenomatous polyposis of the colon. Mutations in this gene are a cause of colorectal cancer (CRC), pilomatrixoma (PTR), medulloblastoma (MDB), and ovarian cancer. Alternative splicing results in multiple transcript variants. [provided by RefSeq, Aug 2016],
Function :	disease:A chromosomal rearrangement involving CTNNB1 may be a cause of salivary gland pleiomorphic adenomas (PA) [181030]. Pleiomorphic adenomas are the most common benign epithelial tumors of the salivary gland. Translocation t(3;8)(p21;q12) with PLAG1.,disease:Activating mutations in CTNNB1 have oncogenic activity resulting in tumor development. Somatic mutations are found in various tumor types, including colon cancers, ovarian and prostate carcinomas, hepatoblastoma (HB), hepatocellular carcinoma (HCC). HBs are malignant

embryonal tumors mainly affecting young children in the first three years of life.,disease:Defects in CTNNB1 are a cause of medulloblastoma (MDB) [MIM:155255]. MDB is a malignant, invasive embryonal tumor of the cerebellum with a preferential manifestation in children.,disease:Defects in CTNNB1 are a cause of pilomatrixoma (PTR) [MIM:132600]; a common benign skin tum

Subcellular Location :

Cytoplasm . Nucleus . Cytoplasm, cytoskeleton . Cell junction, adherens junction . Cell junction . Cell membrane . Cytoplasm, cytoskeleton, microtubule organizing center, centrosome. Cytoplasm, cytoskeleton, spindle pole. Cell junction, synapse . Cytoplasm, cytoskeleton, cilium basal body . Colocalized with RAPGEF2 and TJP1 at cell-cell contacts (By similarity). Cytoplasmic when it is unstabilized (high level of phosphorylation) or bound to CDH1. Translocates to the nucleus when it is stabilized (low level of phosphorylation). Interaction with GLIS2 and MUC1 promotes nuclear translocation. Interaction with EMD inhibits nuclear localization. The majority of beta-catenin is localized to the cell membrane. In interphase, colocalizes with CROCC between CEP250 puncta at the proximal end of cent

Expression :

Expressed in several hair follicle cell types: basal and peripheral matrix cells, and cells of the outer and inner root sheaths. Expressed in colon. Present in cortical neurons (at protein level). Expressed in breast cancer tissues (at protein level) (PubMed:29367600).

Tag :

orthogonal

Sort :

735

No2 :

5651T

No4 :

1

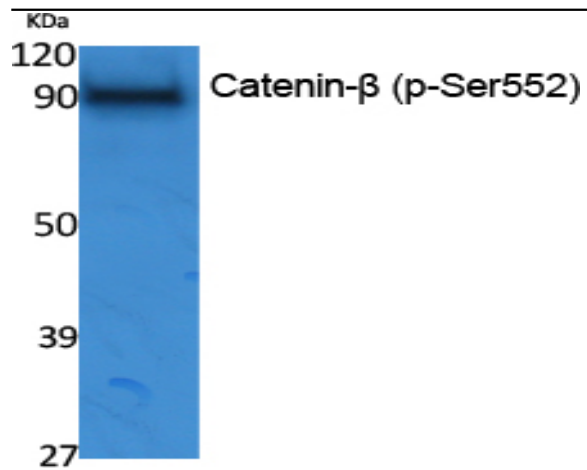
Host :

Rabbit

Modifications :

Phospho

Products Images



Western Blot analysis of extracts from NIH-3T3 cells, using Phospho-Catenin- β (S552) Polyclonal Antibody.