

## Sodium Potassium ATPase alpha-1 (Phospho Tyr260) Antibody

|                              |   |
|------------------------------|---|
| <b>Catalog No :</b>          | YP1212  |
| <b>Reactivity :</b>          | Human;Rat;Mouse   |
| <b>Applications :</b>        | WB;ELISA;IHC  |
| <b>Target :</b>              | Na <sup>+</sup> /K <sup>+</sup> -ATPase α1  |
| <b>Fields :</b>              | >>cGMP-PKG signaling pathway;>>cAMP signaling pathway;>>Cardiac muscle contraction;>>Adrenergic signaling in cardiomyocytes;>>Insulin secretion;>>Thyroid hormone synthesis;>>Thyroid hormone signaling pathway;>>Aldosterone synthesis and secretion;>>Aldosterone-regulated sodium reabsorption;>>Endocrine and other factor-regulated calcium reabsorption;>>Proximal tubule bicarbonate reclamation;>>Salivary secretion;>>Gastric acid secretion;>>Pancreatic secretion;>>Carbohydrate digestion and absorption;>>Protein digestion and absorption;>>Bile secretion;>>Mineral absorption |
| <b>Gene Name :</b>           | ATP1A1  |
| <b>Protein Name :</b>        | Sodium/potassium-transporting ATPase subunit alpha-1 (Na(+)/K(+) ATPase alpha-1 subunit) (EC 3.6.3.9) (Sodium pump subunit alpha-1)   |
| <b>Human Gene Id :</b>       | 476   |
| <b>Human Swiss Prot No :</b> | P05023  |
| <b>Mouse Swiss Prot No :</b> | Q8VDN2  |
| <b>Rat Swiss Prot No :</b>   | P06685  |
| <b>Immunogen :</b>           | Synthetic peptide from human protein at AA range: 230-290   |
| <b>Specificity :</b>         | The antibody detects endogenous Sodium Potassium ATPase alpha-1 when Phospho occurs at Tyr260)  |
| <b>Formulation :</b>         | Liquid in PBS containing 50% glycerol, 0.5% BSA and 0.02% sodium azide.   |
| <b>Source :</b>              | Polyclonal, Rabbit,IgG  |

---

|                               |  |
|-------------------------------|--|
| <b>Dilution :</b>             | <u>WB 1:500-2000;IHC 1:50-300; ELISA 2000-20000</u>  |
| <b>Purification :</b>         | <u>The antibody was affinity-purified from rabbit antiserum by affinity-chromatography using epitope-specific immunogen.</u>   |
| <b>Concentration :</b>        | <u>1 mg/ml</u>   |
| <b>Storage Stability :</b>    | <u>-15°C to -25°C/1 year(Do not lower than -25°C)</u>  |
| <b>Observed Band :</b>        | <u>115kD</u>   |
| <b>Cell Pathway :</b>         | <u>Cardiac muscle contraction;Aldosterone-regulated sodium reabsorption;</u>   |
| <b>Background :</b>           | <u>The protein encoded by this gene belongs to the family of P-type cation transport ATPases, and to the subfamily of Na<sup>+</sup>/K<sup>+</sup> -ATPases. Na<sup>+</sup>/K<sup>+</sup> -ATPase is an integral membrane protein responsible for establishing and maintaining the electrochemical gradients of Na and K ions across the plasma membrane. These gradients are essential for osmoregulation, for sodium-coupled transport of a variety of organic and inorganic molecules, and for electrical excitability of nerve and muscle. This enzyme is composed of two subunits, a large catalytic subunit (alpha) and a smaller glycoprotein subunit (beta). The catalytic subunit of Na<sup>+</sup>/K<sup>+</sup> -ATPase is encoded by multiple genes. This gene encodes an alpha 1 subunit. Multiple transcript variants encoding different isoforms have been found for this gene. [provided by RefSeq, May 2009],</u> |
| <b>Function :</b>             | <u>catalytic activity:ATP + H(2)O + Na(+)(In) + K(+)(Out) = ADP + phosphate + Na(+)(Out) + K(+)(In),,function:This is the catalytic component of the active enzyme, which catalyzes the hydrolysis of ATP coupled with the exchange of sodium and potassium ions across the plasma membrane. This action creates the electrochemical gradient of sodium and potassium ions, providing the energy for active transport of various nutrients.,PTM:Phosphorylation on Tyr-10 modulates pumping activity.,similarity:Belongs to the cation transport ATPase (P-type) family.,similarity:Belongs to the cation transport ATPase (P-type) family. Type IIC subfamily.,subcellular location:Identified by mass spectrometry in melanosome fractions from stage I to stage IV.,subunit:Composed of three subunits: alpha (catalytic), beta and gamma. Binds the HLA class II histocompatibility antigen, DR1.,</u>                         |
| <b>Subcellular Location :</b> | <u>Basolateral cell membrane ; Multi-pass membrane protein . Cell membrane, sarcolemma ; Multi-pass membrane protein . Cell projection, axon . Melanosome . Identified by mass spectrometry in melanosome fractions from stage I to stage IV.</u>  |
| <b>Expression :</b>           | <u>Brain,Cerebellum,Cervix,Placenta,Retinal pigment epithelium</u>   |
| <b>Tag :</b>                  | <u>orthogonal</u>  |

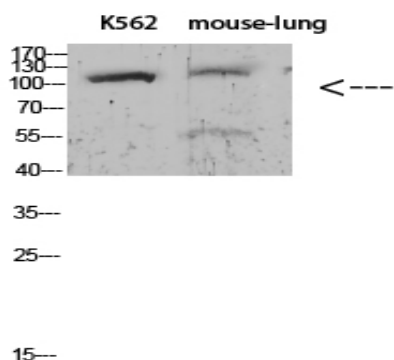
---

---

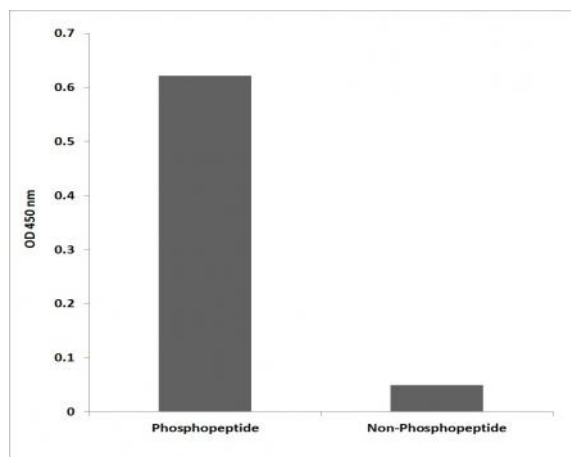
|                        |         |
|------------------------|---------|
| <b>Sort :</b>          | 16499   |
| <b>No4 :</b>           | 1       |
| <b>Host :</b>          | Rabbit  |
| <b>Modifications :</b> | Phospho |

---

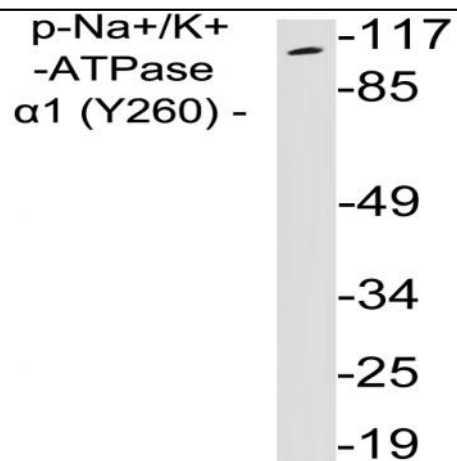
## Products Images



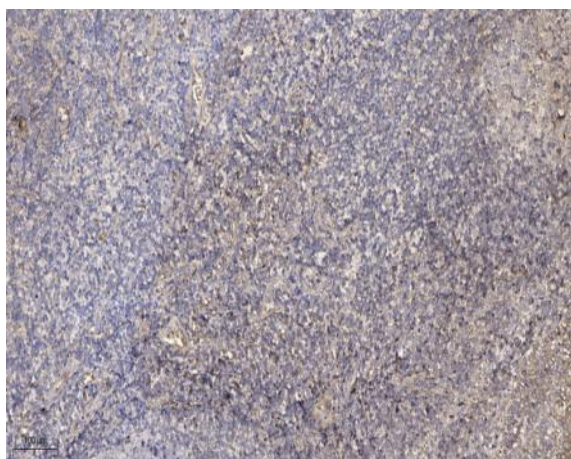
Western blot analysis of KB Hela lysate, antibody was diluted at 1000. Secondary antibody(catalog#:RS0002) was diluted at 1:20000



Enzyme-Linked Immunosorbent Assay (Phospho-ELISA) for Immunogen Phosphopeptide (Phospho-left) and Non-Phosphopeptide (Phospho-right), using Na<sup>+</sup>/K<sup>+</sup>-ATPase  $\alpha$ 1 (Phospho-Tyr260) Antibody



Western blot analysis of lysates from 293 cells treated with PMA, using phospho-Na<sup>+</sup>/K<sup>+</sup>-ATPase α1 (Phospho-Tyr260) antibody.



Immunohistochemical analysis of paraffin-embedded human tonsil. 1, Antibody was diluted at 1:200(4° overnight). 2, Tris-EDTA,pH9.0 was used for antigen retrieval. 3,Secondary antibody was diluted at 1:200(room temperature, 45min).