

CD79A (Phospho Tyr182) rabbit pAb

Catalog No :	YP1292
Reactivity :	Human;Rat;Mouse;
Applications :	WB
Target :	CD79A
Fields :	>>B cell receptor signaling pathway;>>Primary immunodeficiency
Gene Name :	CD79A IGA MB1
Protein Name :	CD79A (Tyr182)
Human Gene Id :	973
Human Swiss Prot No :	P11912
Mouse Gene Id :	12518
Mouse Swiss Prot No :	P11911
Immunogen :	Synthesized phospho peptide around human CD79A (Tyr182)
Specificity :	This antibody detects endogenous levels of Human CD79A (phospho-Tyr182)
Formulation :	Liquid in PBS containing 50% glycerol, 0.5% BSA and 0.02% sodium azide.
Source :	Polyclonal, Rabbit,IgG
Dilution :	WB 1:1000-2000
Purification :	The antibody was affinity-purified from rabbit serum by affinity-chromatography using specific immunogen.
Concentration :	1 mg/ml

Storage Stability : -15°C to -25°C/1 year(Do not lower than -25°C)

Observed Band : 25kD

Cell Pathway : B_Cell_Antigen;Primary immunodeficiency;

Background : The B lymphocyte antigen receptor is a multimeric complex that includes the antigen-specific component, surface immunoglobulin (Ig). Surface Ig non-covalently associates with two other proteins, Ig-alpha and Ig-beta, which are necessary for expression and function of the B-cell antigen receptor. This gene encodes the Ig-alpha protein of the B-cell antigen component. Alternatively spliced transcript variants encoding different isoforms have been described. [provided by RefSeq, Jul 2008],

Function : disease:Defects in CD79A are a cause of non-Bruton type agammaglobulinemia [MIM:601495]. Agammaglobulinemia is an immunodeficiency disease which results in developmental defects in the maturation pathway of B-cells. Two different mutations, one at the splice donor site of intron 2 and the other at the splice acceptor site for exon 3, have been identified. Both mutations give rise to a truncated protein.,function:Required in cooperation with CD79B for initiation of the signal transduction cascade activated by binding of antigen to the B-cell antigen receptor complex (BCR) which leads to internalization of the complex, trafficking to late endosomes and antigen presentation. Also required for BCR surface expression and for efficient differentiation of pro- and pre-B-cells. Stimulates SYK autophosphorylation and activation. Binds to BLNK, bringing BLNK into proximity with SYK and allowing SY

Subcellular Location : Cell membrane; Single-pass type I membrane protein. Following antigen binding, the BCR has been shown to translocate from detergent-soluble regions of the cell membrane to lipid rafts although signal transduction through the complex can also occur outside lipid rafts. .

Expression : B-cells.

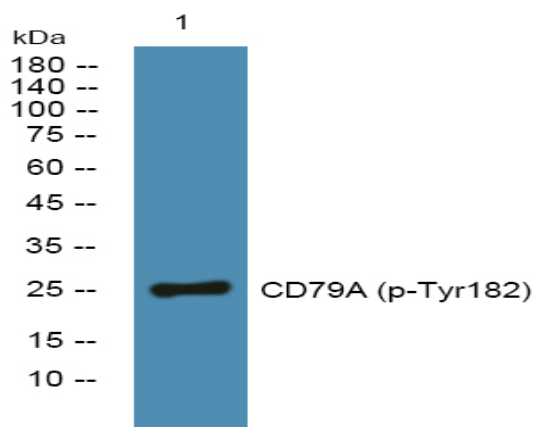
Sort : 3671

No4 : 1

Host : Rabbit

Modifications : Phospho

Products Images



Western blot analysis of lysates from KB cells, primary antibody was diluted at 1:1000, 4° over night