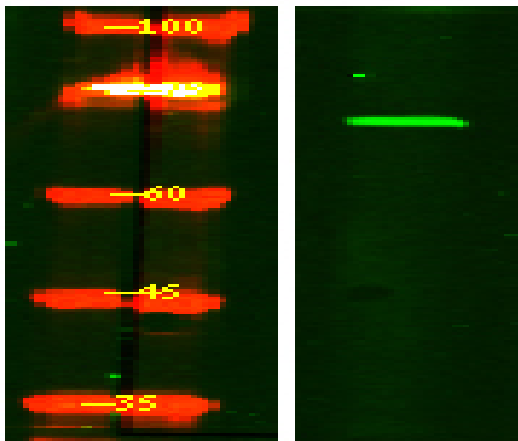


## FRS2- $\alpha$ (Phospho Tyr196) rabbit pAb

<b>Catalog No :</b>	YP1345
<b>Reactivity :</b>	Human;Mouse
<b>Applications :</b>	WB
<b>Target :</b>	FRS2
<b>Fields :</b>	>>Thermogenesis;>>Neurotrophin signaling pathway;>>Proteoglycans in cancer
<b>Gene Name :</b>	FRS2
<b>Protein Name :</b>	FRS2- $\alpha$ (Tyr196)
<b>Human Gene Id :</b>	10818
<b>Human Swiss Prot No :</b>	Q8WU20
<b>Mouse Gene Id :</b>	327826
<b>Mouse Swiss Prot No :</b>	Q8C180
<b>Immunogen :</b>	Synthesized phospho peptide around human FRS2- $\alpha$ (Tyr196)
<b>Specificity :</b>	This antibody detects endogenous levels of Human Mouse FRS2- $\alpha$ (phospho-Tyr196)
<b>Formulation :</b>	Liquid in PBS containing 50% glycerol, 0.5% BSA and 0.02% sodium azide.
<b>Source :</b>	Polyclonal, Rabbit,IgG
<b>Dilution :</b>	WB 1:1000-2000
<b>Purification :</b>	The antibody was affinity-purified from rabbit serum by affinity-chromatography using specific immunogen.
<b>Concentration :</b>	1 mg/ml

<b>Storage Stability :</b>	-15°C to -25°C/1 year(Do not lower than -25°C)
<b>Observed Band :</b>	65kD
<b>Cell Pathway :</b>	Neurotrophin;
<b>Function :</b>	<p>function:Adapter protein that links FGR and NGF receptors to downstream signaling pathways. Involved in the activation of MAP kinases. Modulates signaling via SHC1 by competing for a common binding site on NTRK1.,PTM:Phosphorylated on tyrosine residues upon stimulation by NGF.,PTM:Ubiquitinated when tyrosine phosphorylated and in a complex with GRB2. The unphosphorylated form is not subject to ubiquitination.,sequence caution:Translated as stop.,similarity:Contains 1 IRS-type PTB domain.,subcellular location:Cytoplasmic, membrane-bound.,subunit:Part of a complex containing FRS2, GRB2 and SOS1. Part of a complex containing GRB2 and CBL. Binds RET (By similarity). Binds FGFR1, SUC1, NTRK1, NTRK2, NTRK3 and SRC. The tyrosine-phosphorylated protein binds the SH2 domains of GRB2 and PTPN11.,tissue specificity:Highly expressed in heart, brain, spleen, lung, liver, skeletal muscle, kidney and t</p>
<b>Subcellular Location :</b>	Endomembrane system. Cytoplasmic, membrane-bound.
<b>Expression :</b>	Highly expressed in heart, brain, spleen, lung, liver, skeletal muscle, kidney and testis.
<b>Tag :</b>	orthogonal
<b>Sort :</b>	6309
<b>No4 :</b>	1
<b>Host :</b>	Rabbit
<b>Modifications :</b>	Phospho

## Products Images



Western Blot analysis of HeLa treated or untreated by LPS lysis, using primary antibody at 1:1000 dilution. Secondary antibody(catalog#:RS23920) was diluted at 1:10000