

REPS1 (Phospho Ser709) rabbit pAb

Catalog No :	YP1464
Reactivity :	Human;Rat;Mouse;
Applications :	WB;IHC
Target :	REPS1
Gene Name :	REPS1
Protein Name :	REPS1 (Ser709)
Human Gene Id :	85021
Human Swiss Prot No :	Q96D71
Mouse Gene Id :	19707
Mouse Swiss Prot No :	O54916
Immunogen :	Synthesized phospho peptide around human REPS1 (Ser709)
Specificity :	This antibody detects endogenous levels of Human REPS1 (phospho-Ser709)
Formulation :	Liquid in PBS containing 50% glycerol, 0.5% BSA and 0.02% sodium azide.
Source :	Polyclonal, Rabbit,IgG
Dilution :	WB 1:500-2000;IHC 1:50-300
Purification :	The antibody was affinity-purified from rabbit serum by affinity-chromatography using specific immunogen.
Concentration :	1 mg/ml
Storage Stability :	-15°C to -25°C/1 year(Do not lower than -25°C)

Observed Band : 80kD

Background : This gene encodes a signaling adaptor protein with two EH domains that interacts with proteins that participate in signaling, endocytosis and cytoskeletal changes. The encoded protein has been found in association with intersectin 1 and Src homology 3-domain growth factor receptor-bound 2-like (endophilin) interacting protein 1 when intersectin 1 was isolated from clathrin-coated pits. The encoded protein has also been shown to interact with amphiphysin, a cytoplasmic protein at the surface of synaptic vesicles. Alternative splicing results in multiple transcript variants encoding different isoforms. [provided by RefSeq, Mar 2014],

Function : function:May coordinate the cellular actions of activated EGF receptors and Ral-GTPases.,PTM:EGF stimulates phosphorylation on Tyr-residues.,similarity:Contains 1 EF-hand domain.,similarity:Contains 1 EH domain.,subunit:Homodimer (Potential). Interacts with RAB11FIP2. Interacts with RALBP1, CRK and GRB2. Binding to RALBP1 does not affect its Ral-binding activity. Forms a complex with the SH3 domains of CRK and GRB2 which may link it to an EGF-responsive tyrosine kinase.,

Subcellular Location : Membrane, clathrin-coated pit . Colocalize with ITSN1 at the plasma membrane in structures that are most probably clathrin-coated pits.

Expression : Widely expressed with highest levels in heart and testis.

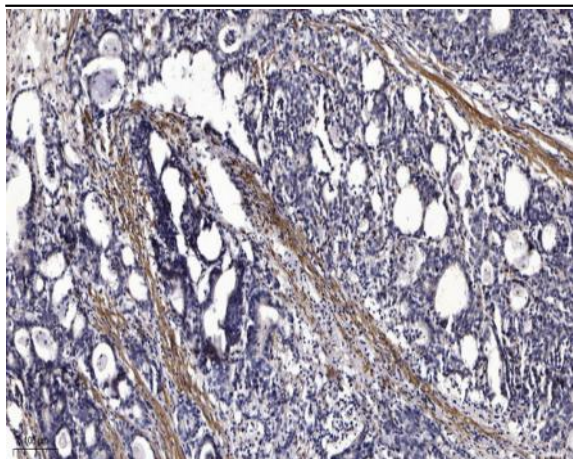
Sort : 14388

No4 : 1

Host : Rabbit

Modifications : Phospho

Products Images



Immunohistochemical analysis of paraffin-embedded human Gastric adenocarcinoma. 1, Antibody was diluted at 1:200(4° overnight). 2, Tris-EDTA,pH9.0 was used for antigen retrieval. 3,Secondary antibody was diluted at 1:200(room temperature, 45min).