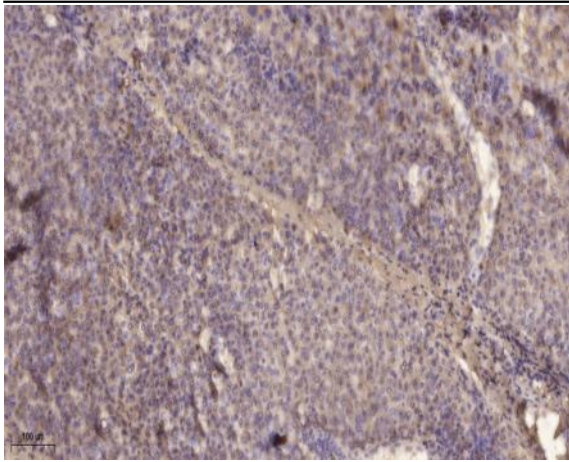


**Rictor (Phospho Thr1135) rabbit pAb**

<b>Catalog No :</b>	YP1466
<b>Reactivity :</b>	Human;Mouse
<b>Applications :</b>	WB;IHC
<b>Target :</b>	Rictor
<b>Fields :</b>	>>mTOR signaling pathway
<b>Gene Name :</b>	RICTOR KIAA1999
<b>Protein Name :</b>	Rictor (Thr1135)
<b>Human Gene Id :</b>	253260
<b>Human Swiss Prot No :</b>	Q6R327
<b>Mouse Gene Id :</b>	78757
<b>Mouse Swiss Prot No :</b>	Q6QI06
<b>Immunogen :</b>	Synthesized phospho peptide around human Rictor (Thr1135)
<b>Specificity :</b>	This antibody detects endogenous levels of Human Mouse Rictor (phospho-Thr1135)
<b>Formulation :</b>	Liquid in PBS containing 50% glycerol, 0.5% BSA and 0.02% sodium azide.
<b>Source :</b>	Polyclonal, Rabbit,IgG
<b>Dilution :</b>	WB 1:500-2000;IHC 1:50-300
<b>Purification :</b>	The antibody was affinity-purified from rabbit serum by affinity-chromatography using specific immunogen.
<b>Concentration :</b>	1 mg/ml

<b>Storage Stability :</b>	-15°C to -25°C/1 year(Do not lower than -25°C)
<b>Observed Band :</b>	190kD
<b>Cell Pathway :</b>	mTOR;
<b>Background :</b>	RICTOR and MTOR (FRAP1; MIM 601231) are components of a protein complex that integrates nutrient- and growth factor-derived signals to regulate cell growth (Sarbasov et al., 2004 [PubMed 15268862]).[supplied by OMIM, Mar 2008],
<b>Function :</b>	function:Plays an essential role in embryonic growth and development (By similarity). Part of the TORC2 complex which plays a critical role in AKT1 'Ser-473' phosphorylation, and may modulate the phosphorylation of PKCA and regulate actin cytoskeleton organization.,similarity:Belongs to the pianissimo family.,subunit:Forms part of the target of rapamycin 2 complex (TORC2) comprised of FRAP1, LST8, PROTOR1, RICTOR and MAPKAP1. TORC2 does not bind to and is not sensitive to FKBP12-rapamycin. Binds directly to FRAP1 and PROTOR1 within the TORC2 complex. May interact with PROTOR2.,
<b>Subcellular Location :</b>	cytosol,TORC2 complex,
<b>Expression :</b>	Amygdala,Brain,Epithelium,Lymph,
<b>Sort :</b>	14515
<b>No4 :</b>	1
<b>Host :</b>	Rabbit
<b>Modifications :</b>	Phospho

## Products Images



Immunohistochemical analysis of paraffin-embedded human liver cancer. 1, Antibody was diluted at 1:200(4° overnight). 2, Tris-EDTA,pH9.0 was used for antigen retrieval. 3,Secondary antibody was diluted at 1:200(room temperature, 45min).