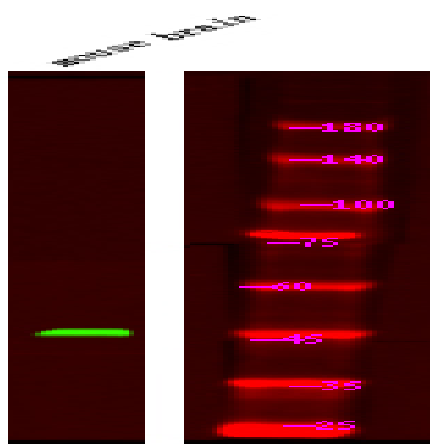


GFAP (Phospho Ser13) Rabbit pAb

Catalog No :	YP1820
Reactivity :	Human;Mouse;Rat
Applications :	IHC;WB
Target :	GFAP
Fields :	>>JAK-STAT signaling pathway
Gene Name :	GFAP
Protein Name :	Glial fibrillary acidic protein (GFAP)
Sequence :	P14136
Human Gene Id :	2670
Human Swiss Prot No :	P14136
Mouse Gene Id :	14580
Mouse Swiss Prot No :	P03995
Rat Gene Id :	24387
Rat Swiss Prot No :	P47819
Immunogen :	Synthesized peptide derived from human GFAP (Phospho Ser13)
Specificity :	This antibody detects endogenous levels of GFAP (Phospho Ser13) Rabbit pAb at Human, Mouse,Rat
Formulation :	Liquid in PBS containing 50% glycerol, and 0.02% sodium azide.
Source :	Rabbit,polyclonal

Dilution :	WB 1:500-2000 IHC 1:50-200
Purification :	The antibody was affinity-purified from rabbit serum by affinity-chromatography using specific immunogen.
Concentration :	1 mg/ml
Storage Stability :	-15°C to -25°C/1 year(Do not lower than -25°C)
Observed Band :	45kD
Background :	glial fibrillary acidic protein(GFAP) Homo sapiens This gene encodes one of the major intermediate filament proteins of mature astrocytes. It is used as a marker to distinguish astrocytes from other glial cells during development. Mutations in this gene cause Alexander disease, a rare disorder of astrocytes in the central nervous system. Alternative splicing results in multiple transcript variants encoding distinct isoforms. [provided by RefSeq, Oct 2008],
Function :	alternative products:Isoforms differ in the C-terminal region which is encoded by alternative exons,disease:Defects in GFAP are a cause of Alexander disease (ALEXD) [MIM:203450]. Alexander disease is a rare disorder of the central nervous system. It is a progressive leukoencephalopathy whose hallmark is the widespread accumulation of Rosenthal fibers which are cytoplasmic inclusions in astrocytes. The most common form affects infants and young children, and is characterized by progressive failure of central myelination, usually leading to death usually within the first decade. Infants with Alexander disease develop a leukoencephalopathy with macrocephaly, seizures, and psychomotor retardation. Patients with juvenile or adult forms typically experience ataxia, bulbar signs and spasticity, and a more slowly progressive course.,function:GFAP, a class-III intermediate filament, is a cell-spe
Subcellular Location :	Cytoplasm . Associated with intermediate filaments. .
Expression :	Expressed in cells lacking fibronectin.
Sort :	999
No4 :	1
Host :	Rabbit
Modifications :	Phospho

Products Images



Western Blot analysis of mouse brain tissue, using primary antibody at 1:1000 dilution 4 °C, overnight. Secondary antibody(catalog#:RS23920) was diluted at 1:10000 25 °C 1.5hours