

CD19 (Phospho Tyr500) Rabbit pAb

| | |
|------------------------------|---|
| Catalog No : | YP1837 |
| Reactivity : | Human;Mouse |
| Applications : | IHC;WB |
| Target : | CD19 |
| Fields : | >>PI3K-Akt signaling pathway;>>Hematopoietic cell lineage;>>B cell receptor signaling pathway;>>Epstein-Barr virus infection;>>Primary immunodeficiency |
| Gene Name : | CD19 |
| Protein Name : | B-lymphocyte antigen CD19 (B-lymphocyte surface antigen B4) (Differentiation antigen CD19) (T-cell surface antigen Leu-12) (CD antigen CD19) |
| Sequence : | P15391 |
| Human Gene Id : | 930 |
| Human Swiss Prot No : | P15391 |
| Mouse Gene Id : | 12478 |
| Mouse Swiss Prot No : | P25918 |
| Immunogen : | Synthesized peptide derived from human CD19 (Phospho Tyr500) |
| Specificity : | This antibody detects endogenous levels of CD19 (Phospho Tyr500) Rabbit pAb at Human, Mouse |
| Formulation : | Liquid in PBS containing 50% glycerol, and 0.02% sodium azide. |
| Source : | Rabbit,polyclonal |
| Dilution : | WB 1:500-2000 IHC 1:50-200 |
| Purification : | The antibody was affinity-purified from rabbit serum by affinity-chromatography |

using specific immunogen.

Concentration : 1 mg/ml

Storage Stability : -15°C to -25°C/1 year(Do not lower than -25°C)

Observed Band : 61kD

Background : CD19 molecule(CD19) Homo sapiens Lymphocytes proliferate and differentiate in response to various concentrations of different antigens. The ability of the B cell to respond in a specific, yet sensitive manner to the various antigens is achieved with the use of low-affinity antigen receptors. This gene encodes a cell surface molecule which assembles with the antigen receptor of B lymphocytes in order to decrease the threshold for antigen receptor-dependent stimulation. [provided by RefSeq, Jul 2008],

Function : disease:Defects in CD19 are a cause of hypogammaglobulinemia [MIM:107265].,function:Assembles with the antigen receptor of B lymphocytes in order to decrease the threshold for antigen receptor-dependent stimulation.,online information:CD19 mutation db,PTM:Phosphorylated on serine and threonine upon DNA damage, probably by ATM or ATR. Phosphorylated on tyrosine following B-cell activation.,similarity:Contains 2 Ig-like C2-type (immunoglobulin-like) domains.,subunit:Forms a complex with CD21, CD81 and CD225 in the membrane of mature B cells. Interacts with VAV. Interacts with GRB2 and SOS when phosphorylated on Tyr-348 and/or Tyr-378. Interacts with PLCG2 when phosphorylated on Tyr-409.,

Subcellular Location : Cell membrane ; Single-pass type I membrane protein . Membrane raft ; Single-pass type I membrane protein .

Expression : Detected on marginal zone and germinal center B cells in lymph nodes (PubMed:2463100). Detected on blood B cells (at protein level) (PubMed:2463100, PubMed:16672701).

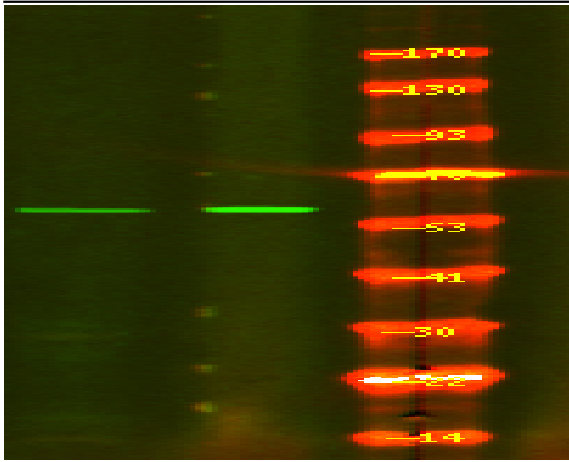
Sort : 999

No4 : 1

Host : Rabbit

Modifications : Phospho

Products Images



Western Blot analysis of mouse brain Jurkat cell ,using primary antibody at 1:1000 dilution. Secondary antibody(catalog#:RS23920) was diluted at 1:10000