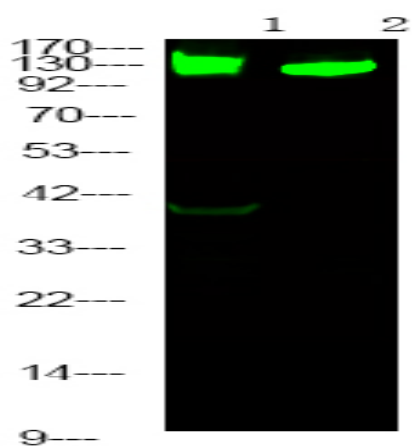


RBL2 (Phospho Ser639) Rabbit pAb

Catalog No :	YP1855
Reactivity :	Human;Mouse;Rat
Applications :	IHC;WB
Target :	p130
Fields :	>>FoxO signaling pathway;>>Cell cycle;>>PI3K-Akt signaling pathway;>>Cellular senescence;>>Human papillomavirus infection;>>Viral carcinogenesis
Gene Name :	RBL2 RB2
Protein Name :	Retinoblastoma-like protein 2 (130 kDa retinoblastoma-associated protein) (p130) (Retinoblastoma-related protein 2) (RBR-2) (pRb2)
Sequence :	Q08999
Human Gene Id :	5934
Human Swiss Prot No :	Q08999
Mouse Gene Id :	19651
Mouse Swiss Prot No :	Q64700
Rat Gene Id :	81758
Rat Swiss Prot No :	O55081
Immunogen :	Synthesized peptide derived from human RBL2 (Phospho Ser639)
Specificity :	This antibody detects endogenous levels of RBL2 (Phospho Ser639) Rabbit pAb at Human, Mouse,Rat
Formulation :	Liquid in PBS containing 50% glycerol, and 0.02% sodium azide.

Source :	Rabbit,polyclonal
Dilution :	WB 1:500-2000 IHC 1:50-200
Purification :	The antibody was affinity-purified from rabbit serum by affinity-chromatography using specific immunogen.
Concentration :	1 mg/ml
Storage Stability :	-15°C to -25°C/1 year(Do not lower than -25°C)
Molecularweight :	125kD
Function :	function:Key regulator of entry into cell division. Directly involved in heterochromatin formation by maintaining overall chromatin structure and, in particular, that of constitutive heterochromatin by stabilizing histone methylation. Recruits and targets histone methyltransferases SUV420H1 and SUV420H2, leading to epigenetic transcriptional repression. Controls histone H4 'Lys-20' trimethylation. Probably acts as a transcription repressor by recruiting chromatin-modifying enzymes to promoters. Potent inhibitor of E2F-mediated trans-activation, associates preferentially with E2F5. Binds to cyclins A and E. Binds to and may be involved in the transforming capacity of the adenovirus E1A protein. May act as a tumor suppressor.,miscellaneous:G0-restricted expression.,PTM:During G0 and early G1 phase of the cell cycle, phosphorylated on Ser-639 and on 5 sites within the domain B. Phosphorylat
Subcellular Location :	Nucleus.
Tag :	orthogonal
Sort :	999
No4 :	1
Host :	Rabbit
Modifications :	Phospho

Products Images



Western Blot analysis of 1 HeLa cell, 2 Serum-free treated ,using primary antibody at 1:1000 dilution. Secondary antibody(catalog#:RS23920) was diluted at 1:10000