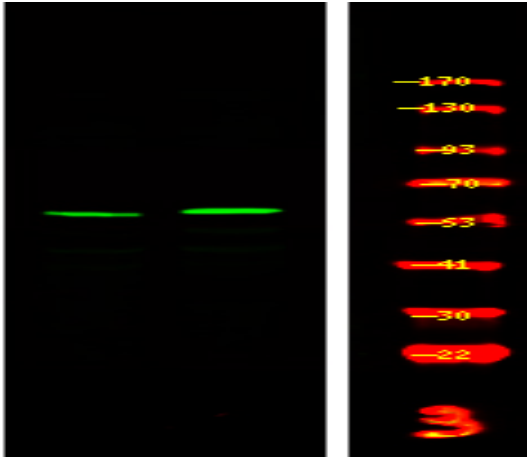


## CSK (Phospho Tyr304) Rabbit pAb

<b>Catalog No :</b>	YP1858
<b>Reactivity :</b>	Human;Mouse;Rat
<b>Applications :</b>	IHC;WB
<b>Target :</b>	Csk
<b>Fields :</b>	>>Epithelial cell signaling in Helicobacter pylori infection
<b>Gene Name :</b>	CSK
<b>Protein Name :</b>	Tyrosine-protein kinase CSK (EC 2.7.10.2) (C-Src kinase) (Protein-tyrosine kinase CYL)
<b>Sequence :</b>	P41240
<b>Human Gene Id :</b>	1445
<b>Human Swiss Prot No :</b>	P41240
<b>Mouse Gene Id :</b>	12988
<b>Mouse Swiss Prot No :</b>	P41241
<b>Rat Gene Id :</b>	315707
<b>Rat Swiss Prot No :</b>	P32577
<b>Immunogen :</b>	Synthesized peptide derived from human CSK (Phospho Tyr304)
<b>Specificity :</b>	This antibody detects endogenous levels of CSK (Phospho Tyr304) Rabbit pAb at Human, Mouse,Rat
<b>Formulation :</b>	Liquid in PBS containing 50% glycerol, and 0.02% sodium azide.
<b>Source :</b>	Rabbit,polyclonal

<b>Dilution :</b>	WB 1:500-2000 IHC 1:50-200
<b>Purification :</b>	The antibody was affinity-purified from rabbit serum by affinity-chromatography using specific immunogen.
<b>Concentration :</b>	1 mg/ml
<b>Storage Stability :</b>	-15°C to -25°C/1 year(Do not lower than -25°C)
<b>Observed Band :</b>	55kD
<b>Function :</b>	<p>catalytic activity:ATP + a [protein]-L-tyrosine = ADP + a [protein]-L-tyrosine phosphate.,function:Specifically phosphorylates 'Tyr-504' on LCK, which acts as a negative regulatory site. Can also act on the LYN and FYN kinases.,PTM:Autophosphorylation of Tyr-304 occurs only at abnormally high CSK concentrations in vitro.,similarity:Belongs to the protein kinase superfamily. Tyr protein kinase family.,similarity:Belongs to the protein kinase superfamily. Tyr protein kinase family. CSK subfamily.,similarity:Contains 1 protein kinase domain.,similarity:Contains 1 SH2 domain.,similarity:Contains 1 SH3 domain.,subcellular location:Mainly cytoplasmic, also present in lipid rafts.,subunit:Interacts with PTPN8 (By similarity). Interacts with phosphorylated SIT1, PAG1, LIME1 and TGFB1I1.,tissue specificity:Expressed in lung and macrophages.,</p>
<b>Subcellular Location :</b>	Cytoplasm . Cell membrane . Mainly cytoplasmic, also present in lipid rafts. .
<b>Expression :</b>	Expressed in lung and macrophages.
<b>Tag :</b>	orthogonal
<b>Sort :</b>	999
<b>No4 :</b>	1
<b>Host :</b>	Rabbit
<b>Modifications :</b>	Phospho

## Products Images



Western Blot analysis of 1 MCF-7 cell, 2 LPS 100ng/mL 30min treated ,using primary antibody at 1:1000 dilution. Secondary antibody(catalog#:RS23920) was diluted at 1:10000