

**Met (Phospho Ser985) Rabbit pAb**

<b>Catalog No :</b>	YP1871
<b>Reactivity :</b>	Human;Mouse;Rat
<b>Applications :</b>	IHC;WB
<b>Target :</b>	Met
<b>Fields :</b>	>>EGFR tyrosine kinase inhibitor resistance;>>MAPK signaling pathway;>>Ras signaling pathway;>>Rap1 signaling pathway;>>Calcium signaling pathway;>>PI3K-Akt signaling pathway;>>Axon guidance;>>Focal adhesion;>>Adherens junction;>>Bacterial invasion of epithelial cells;>>Epithelial cell signaling in Helicobacter pylori infection;>>Malaria;>>Pathways in cancer;>>Transcriptional misregulation in cancer;>>Proteoglycans in cancer;>>MicroRNAs in cancer;>>Chemical carcinogenesis - reactive oxygen species;>>Renal cell carcinoma;>>Melanoma;>>Non-small cell lung cancer;>>Hepatocellular carcinoma;>>Gastric cancer;>>Central carbon metabolism in cancer
<b>Gene Name :</b>	MET
<b>Protein Name :</b>	Hepatocyte growth factor receptor (HGF receptor) (EC 2.7.10.1) (HGF/SF receptor) (Proto-oncogene c-Met) (Scatter factor receptor) (SF receptor) (Tyrosine-protein kinase Met)
<b>Sequence :</b>	P08581
<b>Human Gene Id :</b>	4233
<b>Human Swiss Prot No :</b>	P08581
<b>Mouse Swiss Prot No :</b>	P16056
<b>Rat Gene Id :</b>	24553
<b>Rat Swiss Prot No :</b>	P97523
<b>Immunogen :</b>	Synthesized peptide derived from human Met (Phospho Ser985)

**Specificity :** This antibody detects endogenous levels of Met (Phospho Ser985) Rabbit pAb at Human, Mouse,Rat

---

**Formulation :** Liquid in PBS containing 50% glycerol, and 0.02% sodium azide.

---

**Source :** Rabbit,polyclonal

---

**Dilution :** WB 1:500-2000 IHC 1:50-200

---

**Purification :** The antibody was affinity-purified from rabbit serum by affinity-chromatography using specific immunogen.

---

**Concentration :** 1 mg/ml

---

**Storage Stability :** -15°C to -25°C/1 year(Do not lower than -25°C)

---

**Observed Band :** 155kD

---

**Background :** MET proto-oncogene, receptor tyrosine kinase(MET) Homo sapiens This gene encodes a member of the receptor tyrosine kinase family of proteins and the product of the proto-oncogene MET. The encoded preprotein is proteolytically processed to generate alpha and beta subunits that are linked via disulfide bonds to form the mature receptor. Further processing of the beta subunit results in the formation of the M10 peptide, which has been shown to reduce lung fibrosis. Binding of its ligand, hepatocyte growth factor, induces dimerization and activation of the receptor, which plays a role in cellular survival, embryogenesis, and cellular migration and invasion. Mutations in this gene are associated with papillary renal cell carcinoma, hepatocellular carcinoma, and various head and neck cancers. Amplification and overexpression of this gene are also associated with multiple human cancers. [provided by RefSeq, May 2016],

---

**Function :** catalytic activity:ATP + a [protein]-L-tyrosine = ADP + a [protein]-L-tyrosine phosphate.,disease:Activation of MET after rearrangement with the TPR gene produces an oncogenic protein.,disease:Defects in MET are a cause of hepatocellular carcinoma (HCC) [MIM:114550].,disease:Defects in MET are a cause of hereditary papillary renal carcinoma (HPRC) [MIM:605074]; also known as papillary renal cell carcinoma 2 (RCCP2). HPRC is a form of inherited kidney cancer characterized by a predisposition to develop multiple, bilateral papillary renal tumors. The pattern of inheritance is consistent with autosomal dominant transmission with reduced penetrance.,disease:Defects in MET may be associated with gastric cancer.,disease:Genetic variations in MET may be associated with susceptibility to autism type 9 (AUTS9) [MIM:611015]. Autism is a neurodevelopmental disorder characterized by disturbance in I

---

**Subcellular Location :** Membrane; Single-pass type I membrane protein.; [Isoform 3]: Secreted.

---

**Expression :** Expressed in normal hepatocytes as well as in epithelial cells lining the stomach, the small and the large intestine. Found also in basal keratinocytes of esophagus and skin. High levels are found in liver, gastrointestinal tract, thyroid and kidney. Also present in the brain. Expressed in metaphyseal bone (at protein level) (PubMed:26637977).

**Tag :** orthogonal

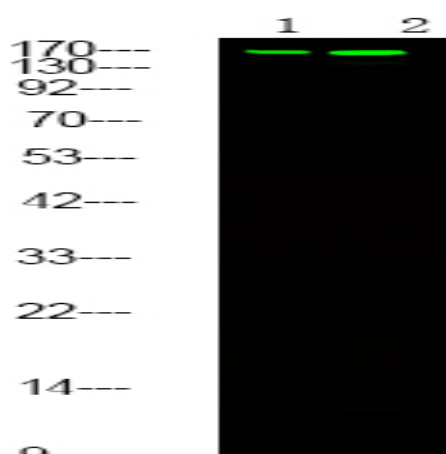
**Sort :** 999

**No4 :** 1

**Host :** Rabbit

**Modifications :** Phospho

## Products Images



Western Blot analysis of 1 A549 cell, 2 LPS 100ng/mL 30min treated ,using primary antibody at 1:1000 dilution. Secondary antibody(catalog#:RS23920) was diluted at 1:10000