

Connexin 43 (Phospho Ser279) Rabbit pAb

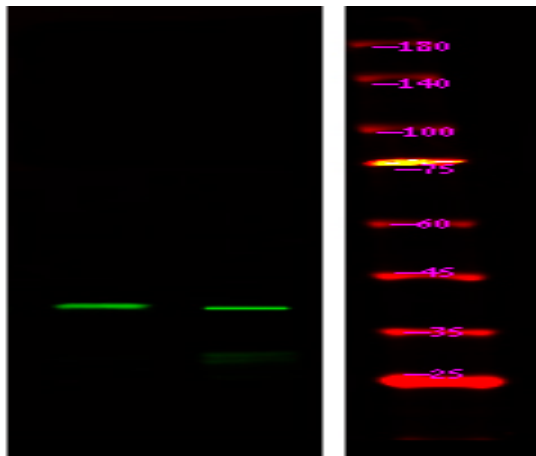
Catalog No :	YP1874
Reactivity :	Human;Mouse;Rat
Applications :	IHC;WB
Target :	Connexin 43
Fields :	>>Gap junction;>>Arrhythmogenic right ventricular cardiomyopathy
Gene Name :	GJA1 GJAL
Protein Name :	Gap junction alpha-1 protein (Connexin-43) (Cx43) (Gap junction 43 kDa heart protein)
Sequence :	P17302
Human Gene Id :	2697
Human Swiss Prot No :	P17302
Mouse Gene Id :	14609
Mouse Swiss Prot No :	P23242
Rat Gene Id :	24392
Rat Swiss Prot No :	P08050
Immunogen :	Synthesized peptide derived from human Connexin 43 (Phospho Ser279)
Specificity :	This antibody detects endogenous levels of Connexin 43 (Phospho Ser279) Rabbit pAb at Human, Mouse,Rat
Formulation :	Liquid in PBS containing 50% glycerol, and 0.02% sodium azide.
Source :	Rabbit,polyclonal

Dilution :	WB 1:500-2000 IHC 1:50-200
Purification :	The antibody was affinity-purified from rabbit serum by affinity-chromatography using specific immunogen.
Concentration :	1 mg/ml
Storage Stability :	-15°C to -25°C/1 year(Do not lower than -25°C)
Observed Band :	43kD
Background :	gap junction protein alpha 1(GJA1) Homo sapiens This gene is a member of the connexin gene family. The encoded protein is a component of gap junctions, which are composed of arrays of intercellular channels that provide a route for the diffusion of low molecular weight materials from cell to cell. The encoded protein is the major protein of gap junctions in the heart that are thought to have a crucial role in the synchronized contraction of the heart and in embryonic development. A related intronless pseudogene has been mapped to chromosome 5. Mutations in this gene have been associated with oculodentodigital dysplasia, autosomal recessive craniometaphyseal dysplasia and heart malformations. [provided by RefSeq, May 2014],
Function :	caution:PubMed:11741837 reported 2 mutations (Phe-11 and Ala-24) linked to non-syndromic autosomal recessive deafness (DFNBG). These mutations have subsequently been shown (PubMed:12457340) to involve the pseudogene of connexin-43 located on chromosome 5.,caution:PubMed:7715640 reported a mutation Pro-364 linked to congenital heart diseases. This was later shown (PubMed:8873667) to be an artifact.,disease:Defects in GJA1 are a cause of hypoplastic left heart syndrome (HLHS) [MIM:241550]. HLHS refers to the abnormal development of the left-sided cardiac structures, resulting in obstruction to blood flow from the left ventricular outflow tract. In addition, the syndrome includes underdevelopment of the left ventricle, aorta, and aortic arch, as well as mitral atresia or stenosis.,disease:Defects in GJA1 are the cause of autosomal dominant oculodentodigital dysplasia (ODDD) [MIM:164200]; al
Subcellular Location :	Cell membrane ; Multi-pass membrane protein . Cell junction, gap junction . Endoplasmic reticulum . Localizes at the intercalated disk (ICD) in cardiomyocytes and the proper localization at ICD is dependent on TMEM65. .
Expression :	Expressed in the heart and fetal cochlea.
Tag :	orthogonal
Sort :	999
No4 :	1

Host : Rabbit

Modifications : Phospho

Products Images



Western Blot analysis of 1 HepG2 cell, 2 LPS 100ng/mL 30min treated ,using primary antibody at 1:1000 dilution. Secondary antibody(catalog#:RS23920) was diluted at 1:10000